



Police Department

January 2022 Crime Data

February 4, 2022

Prepared by:
David Sparks, CCIA

*Numbers in this report may be updated from month to month as records updates occur.
The information contained in this report is primarily raw data until calendar year reporting.*

Distribution:

City Manager
Assistant City Managers
Chief of Police
Assistant Chief of Police
Major – Criminal Investigations
Major – Uniform
Major – Support Services
Investigations Captains
Uniform Captains

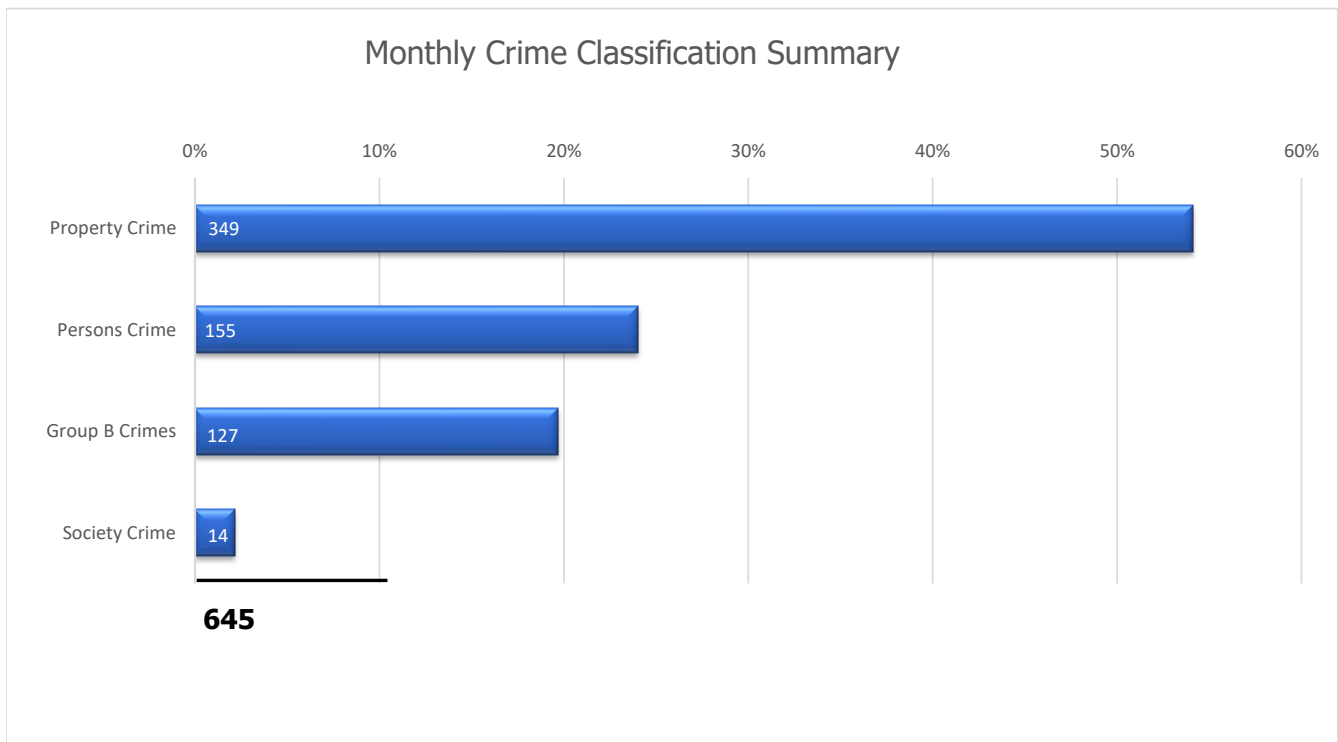
Professional Standards Lieutenant
Special Operations
Gang Unit
Accreditation Manager
Family Protection
Records Supervisor
Planning & Research
Training Supervisor

Albany Police Department NIBRS Profile

Type of Offense			Number of Incidents Reported				
			Jan 2022 Incidents	Jan 2022 Cleared	Percent Cleared	Dec 2021 Incidents	Monthly Change
NIBRS Group A Crimes Against Persons	09A-B	Homicide Offenses	1	1	100%	1	
	09A	Murder	1	1	100%	1	
	09B	Negligent Manslaughter	0	0		0	
	11A-D	Sex Offenses	10	5	50%	3	▲7
	11A	Forcible Rape	3	2	67%	2	▲1
	11B-D	Other Forcible Sexual Offenses	7	3	43%	1	▲6
	13A-C	Assault Offenses	139	64	46%	165	▼26
	13A	Aggravated Assault	50	25	50%	47	▲3
	13B	Simple Assault	75	30	40%	97	▼22
	13C	Intimidation	14	9	64%	21	▼7
	36A-B	Sex Offenses, Nonforcible	0	1		1	▼1
	64A-B	Human Trafficking Offenses	2	0	0%	1	▲1
	100	Kidnapping / Abduction	3	2	67%	3	
Crimes Against Persons Subtotal			155	73	47%	174	▼19
NIBRS Group A Crimes Against Property	120	Robbery	2	3	150%	10	▼8
		Armed Robbery	0	1		3	▼3
		All Other Robbery	2	2	100%	7	▼5
	200	Arson	3	0	0%	3	
	210	Extortion/Blackmail	0	0		0	
	220	Burglary/Breaking & Entering	29	5	17%	39	▼10
		1st Degree Residential Burglary	22	3	14%	26	▼4
		2nd Degree Business/Storage Burglary	7	2	29%	13	▼6
	23A-H	Larceny/Theft Offenses	146	22	15%	198	▼52
	23 A-B	Pocket-Picking & Purse-Snatching	0	0		1	▼1
	23C	Shoplifting	30	8	27%	38	▼8
	23D	Theft from Building	0	0		0	
	23E	Theft from Coin-Operated Machine	0	0		0	
	23F	Theft from Motor Vehicle	28	4	14%	46	▼18
	23G	Theft of Motor Vehicle Parts	14	0	0%	12	▲2
	23H	All Other Larceny	74	10	14%	101	▼27
	240	Motor Vehicle Theft	27	3	11%	25	▲2
	250	Counterfeiting/Forgery	13	0	0%	23	▼10
	26A-G	Fraud Offenses	26	2	8%	30	▼4
	270	Embezzlement	0	0		0	
280	Stolen Property	1	1	100%	1		
290	Destruction/Vandalism of Property	102	13	13%	114	▼12	
510	Bribery	0	0		0		
Crimes Against Property Subtotal			349	49	14%	443	▼94
NIBRS Group A Crimes Against Society	35A-B	Drug/Narcotic Offenses	2	1	50%	13	▼11
	35A	Drug/Narcotic Violations	2	1	50%	12	▼10
	35B	Drug Equipment Violations	0	0		1	▼1
	370	Pornography/Obscene Material	1	0	0%	0	▲1
	39A-D	Gambling Offenses	0	0		0	
	40A-C	Prostitution Offenses	0	0		0	
	520	Weapon Law Violations	10	8	80%	10	
	720	Animal Cruelty	1	0	0%	2	▼1
Crimes Against Society Subtotal			14	9	64%	25	▼11
NIBRS Group A Total			518	131	25%	642	▼124

Albany Police Department NIBRS Profile

Type of Offense			Number of Incidents Reported				
			Jan 2022 Incidents	Jan 2022 Cleared	Percent Cleared	Dec 2021 Incidents	Monthly Change
NIBRS Group B General Crimes	90A	Bad Checks	0	0		0	
	90B	Curfew/Loitering/Vagrancy	2	0		3	▼1
	90C	Disorderly Conduct	37	22	59%	59	▼22
	90D	Driving Under the Influence	10	8	80%	10	
	90E	Drunkenness	0	0		0	
	90F	Family Offenses, Nonviolent	27	8	30%	24	▲3
	90G	Liquor Law Violations	3	2	67%	4	▼1
	90H	Peeping Tom	0	0		0	
	90J	Trespass of Real Property	17	4	24%	25	▼8
	90Z	All Other Offenses	31	22	71%	48	▼17
Group B Totals			127	66	52%	173	▼46
NIBRS Group A & B Totals			645	197	31%	815	▼170

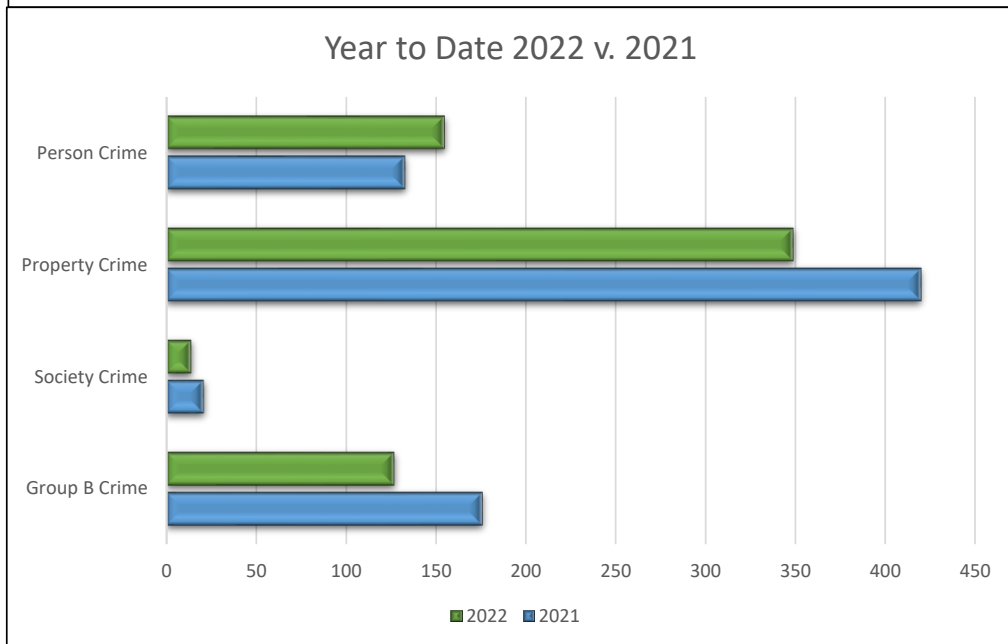
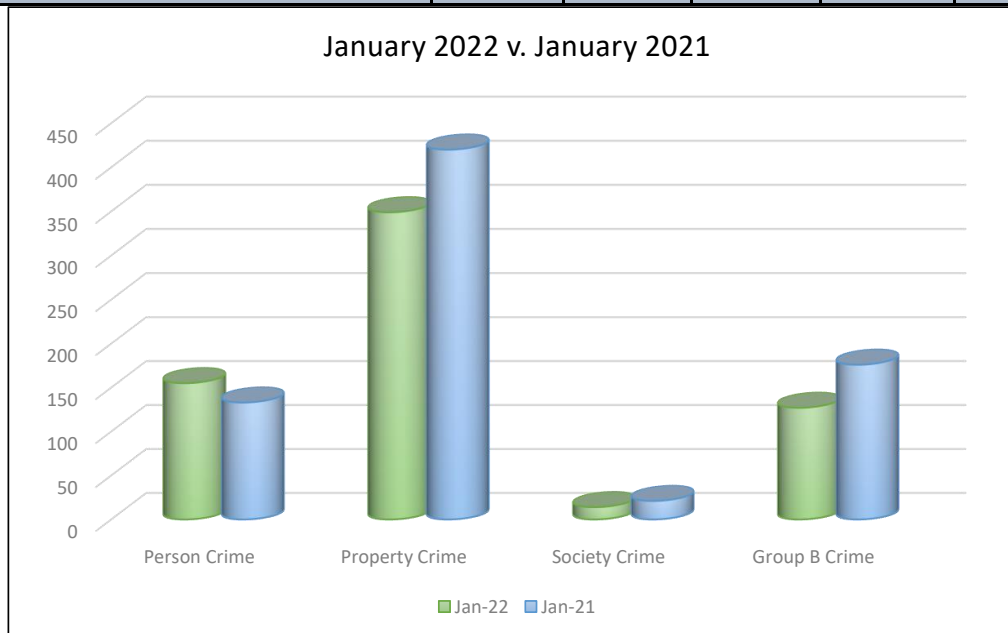


Albany Police Department NIBRS Annual Comparison

Type of Offense			Number of Incidents Reported					
			Jan 2022 Incidents	Jan 2021 Incidents	% Chg	2022 Year to Date	2021 Year to Date	% Chg
NIBRS Group A Crimes Against Persons	09A-B	Homicide Offenses	1	1	0.0%	1	1	0.0%
	09A	Murder	1	1	0.0%	1	1	0.0%
	09B	Negligent Manslaughter	0	0		0	0	100%
	11A-D	Sex Offenses	10	4	150.0%	10	4	150.0%
	11A	Forcible Rape	3	2	50.0%	3	2	50.0%
	11B-D	Other Forcible Sexual Offenses	7	2	250.0%	7	2	250.0%
	13A-C	Assault Offenses	139	125	11.2%	139	125	11.2%
	13A	Aggravated Assault	50	37	35.1%	50	37	35.1%
	13B	Simple Assault	75	77	-2.6%	75	77	-2.6%
	13C	Intimidation	14	11	27.3%	14	11	27.3%
	36A-B	Sex Offenses, Nonforcible	0	0	100%	0	0	
	64A-B	Human Trafficking Offenses	2	0	100%	2	0	
100	Kidnapping / Abduction	3	3	0.0%	3	3	0.0%	
Crimes Against Persons Subtotal			155	133	16.5%	155	133	16.5%
NIBRS Group A Crimes Against Property	120	Robbery	2	11	-81.8%	2	11	-81.8%
		Armed Robbery	0	4	-100.0%	0	4	-100.0%
		All Other Robbery	2	7	-71.4%	2	7	-71.4%
	200	Arson	3	4	-25.0%	3	4	-25.0%
	210	Extortion/Blackmail	0	0		0	0	
	220	Burglary/Breaking & Entering	29	43	-32.6%	29	43	-32.6%
		1st Degree Residential Burglary	22	21	4.8%	22	21	4.8%
		2nd Degree Business/Storage Burglary	7	22	-68.2%	7	22	-68.2%
	23A-H	Larceny/Theft Offenses	146	183	-20.2%	146	183	-20.2%
	23 A-B	Pocket-Picking & Purse-Snatching	0	0		0	0	
	23C	Shoplifting	30	39	-23.1%	30	39	-23.1%
	23D	Theft from Building	0	0		0	0	
	23E	Theft from Coin-Operated Machine	0	0		0	0	
	23F	Theft from Motor Vehicle	28	63	-55.6%	28	63	-55.6%
	23G	Theft of Motor Vehicle Parts	14	0		14	0	
	23H	All Other Larceny	74	81	-8.6%	74	81	-8.6%
	240	Motor Vehicle Theft	27	43	-37.2%	27	43	-37.2%
	250	Counterfeiting/Forgery	13	8	62.5%	13	8	62.5%
	26A-G	Fraud Offenses	26	24	8.3%	26	24	8.3%
270	Embezzlement	0	0		0	0		
280	Stolen Property	1	0		1	0		
290	Destruction/Vandalism of Property	102	104	-1.9%	102	104	-1.9%	
510	Bribery	0	0		0	0		
Crimes Against Property Subtotal			349	420	-16.9%	349	420	-16.9%
NIBRS Group A Crimes Against Society	35A-B	Drug/Narcotic Offenses	2	14	-85.7%	2	14	-85.7%
	35A	Drug/Narcotic Violations	2	7	-71.4%	2	7	-71.4%
	35B	Drug Equipment Violations	0	7	-100.0%	0	7	-100.0%
	370	Pornography/Obscene Material	1	0	100%	1	0	
	39A-D	Gambling Offenses	0	0		0	0	
	40A-C	Prostitution Offenses	0	0		0	0	100%
	520	Weapon Law Violations	10	7	42.9%	10	7	42.9%
	720	Animal Cruelty	1	0	100%	1	0	
Crimes Against Society Subtotal			14	21	-33.3%	14	21	-33.3%
NIBRS Group A Total			518	574	-9.8%	518	574	-9.8%

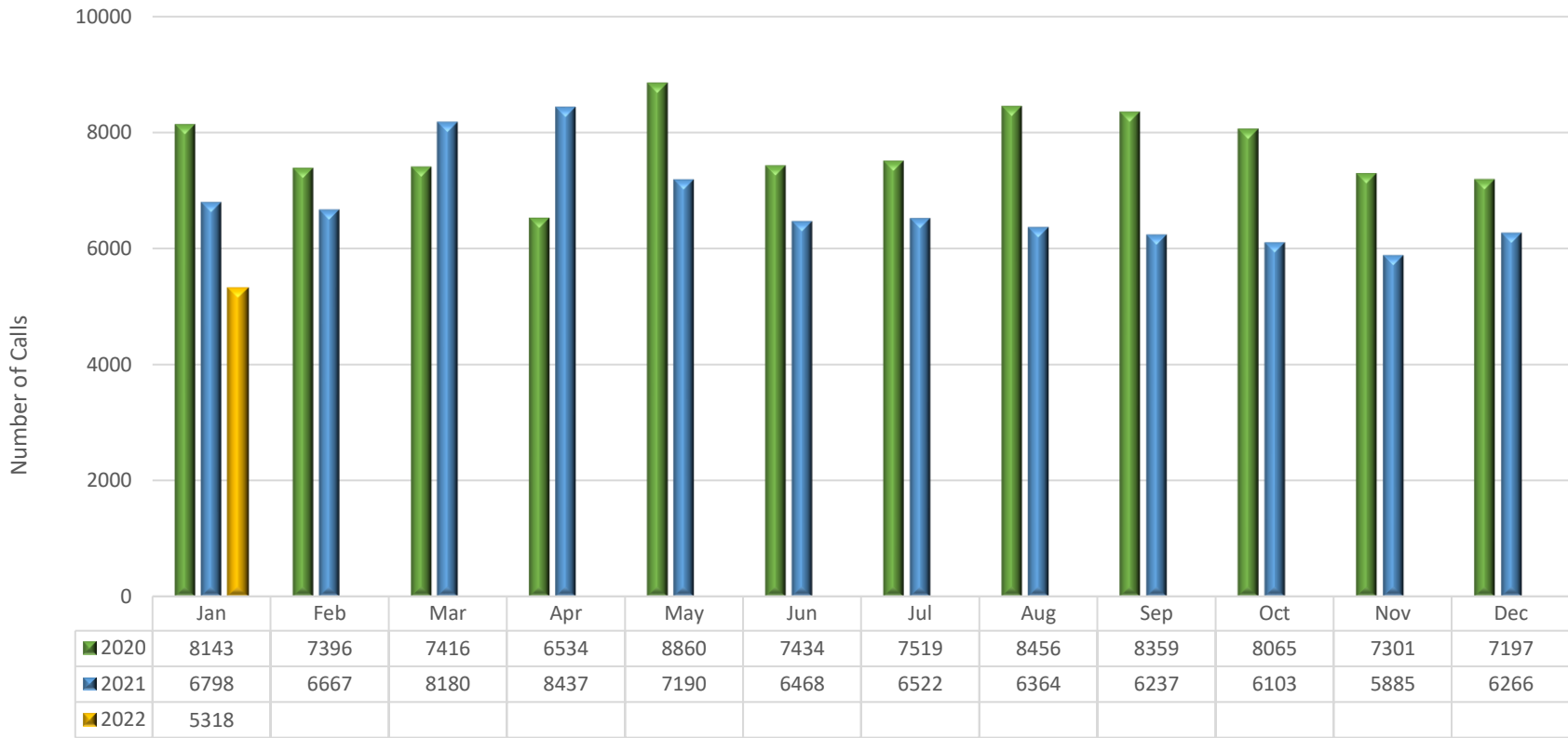
Albany Police Department NIBRS Annual Comparison

Type of Offense			Number of Incidents Reported					
			Jan 2022 Incidents	Jan 2021 Incidents	% Chg	2022 Year to Date	2021 Year to Date	% Chg
NIBRS Group B General Crimes	90A	Bad Checks	0	0	100%	0	0	100%
	90B	Curfew/Loitering/Vagrancy	2	2	0.0%	2	2	0.0%
	90C	Disorderly Conduct	37	56	-33.9%	37	56	-33.9%
	90D	Driving Under the Influence	10	11	-9.1%	10	11	-9.1%
	90E	Drunkenness	0	0	100%	0	0	100%
	90F	Family Offenses, Nonviolent	27	36	-25.0%	27	36	-25.0%
	90G	Liquor Law Violations	3	9	-66.7%	3	9	-66.7%
	90H	Peeping Tom	0	0	100%	0	0	100%
	90J	Trespass of Real Property	17	26	-34.6%	17	26	-34.6%
	90Z	All Other Offenses	31	36	-13.9%	31	36	-13.9%
Group B Totals			127	176	-27.8%	127	176	-27.8%
NIBRS Group A & B Totals			645	750	-14.0%	645	750	-14.0%



Calls for Service by Month

Albany Police Department

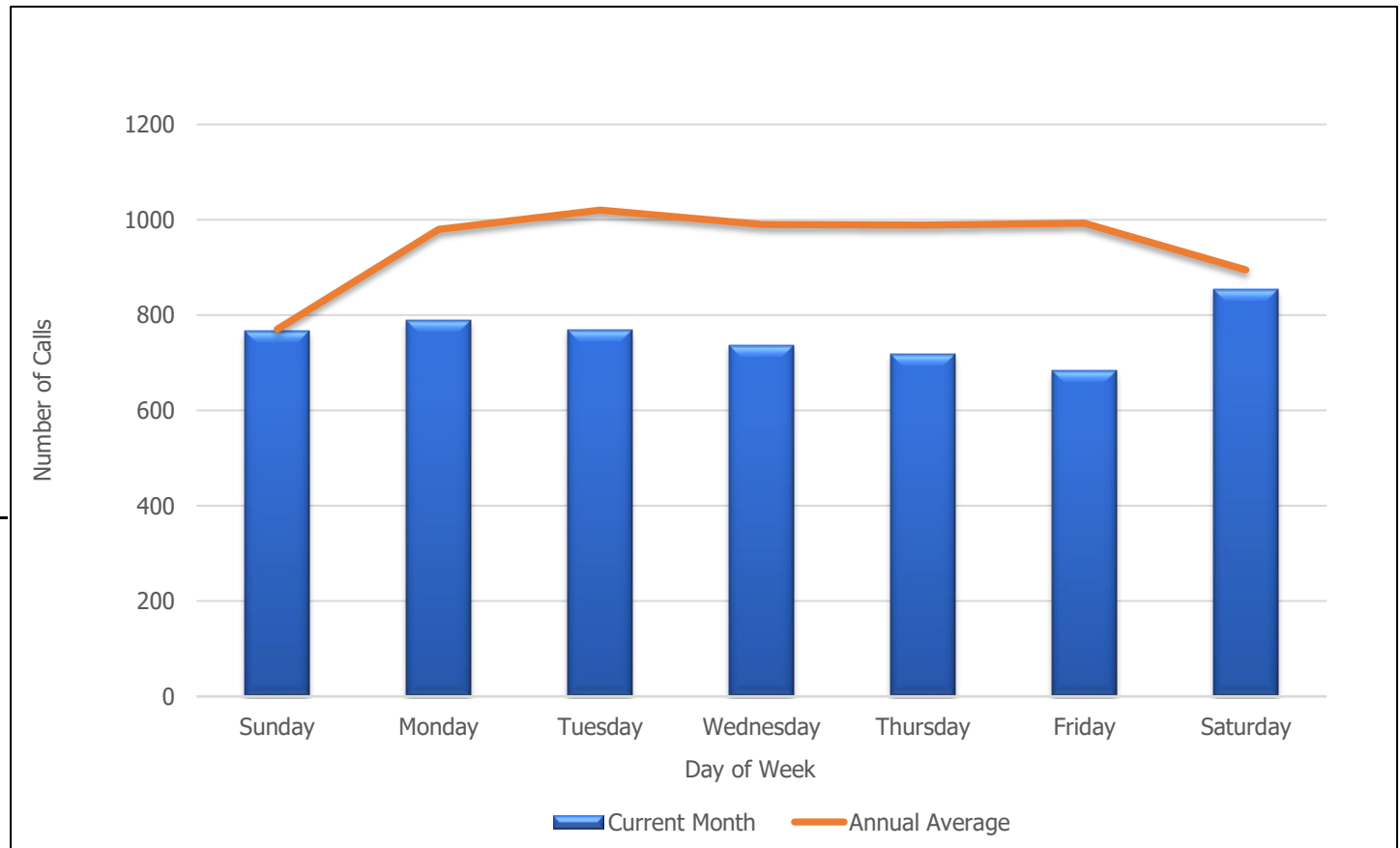


■ 2020 ■ 2021 ■ 2022

Monthly Calls for Service by Day of Week

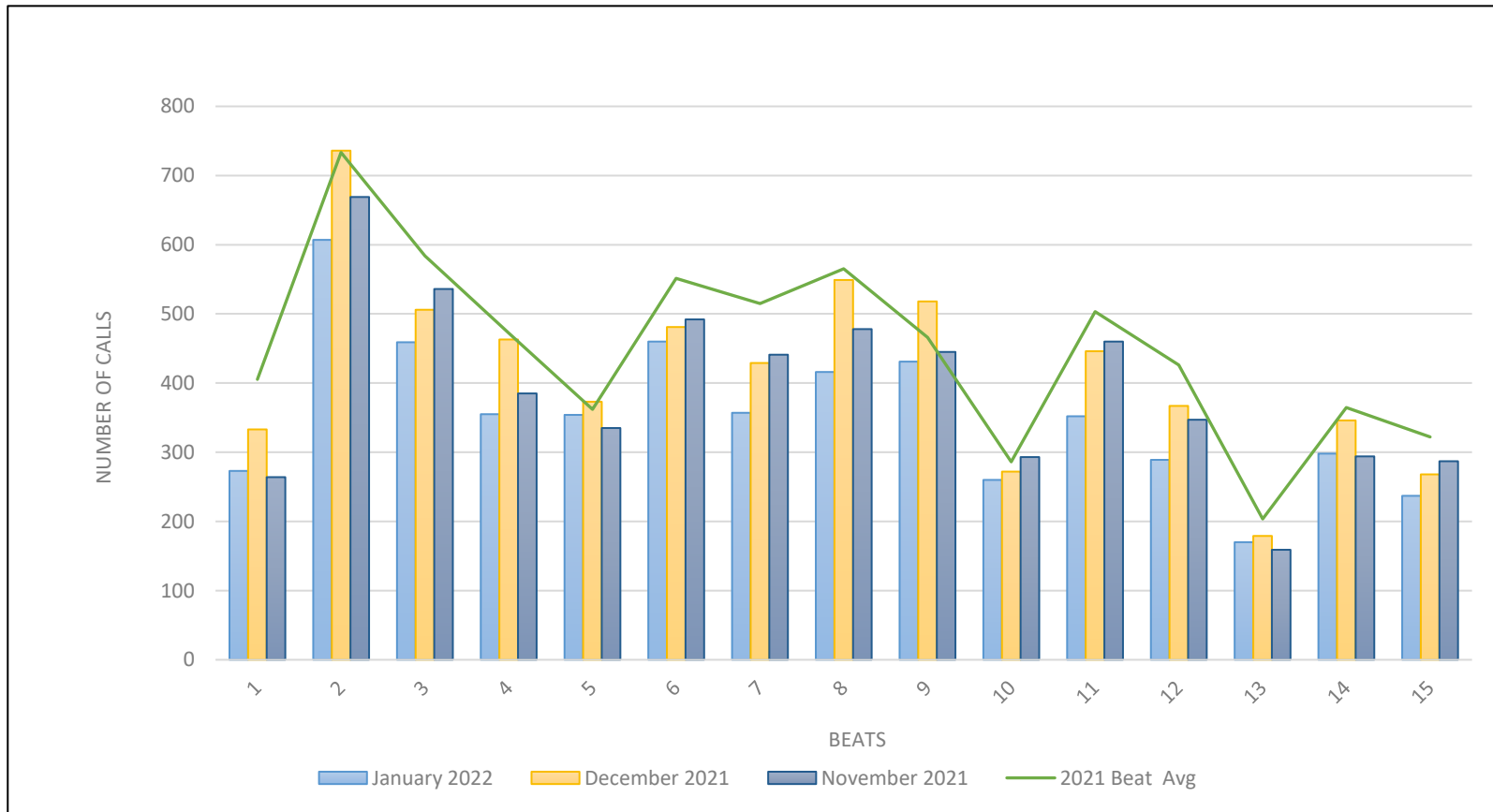
Albany Police Department

Calls For Service	
Day	Jan 2022
Sunday	766
Monday	790
Tuesday	769
Wednesday	737
Thursday	718
Friday	683
Saturday	855
	<hr/>
	5318



Calls for Service by Beat

Albany Police Department



Beats	1	2	3	4	5	6	7	8	9	10	11	12	13	14	15
January 2022	273	607	459	355	354	460	357	416	431	260	352	289	170	298	237
December 2021	333	736	506	463	373	481	429	549	518	272	446	367	179	346	268
November 2021	264	669	536	385	335	492	441	478	445	293	460	347	159	294	287
2021 Beat Avg	405	733	584	473	362	552	515	565	466	286	503	426	204	365	322

Albany Police Department Patrol Beats

