



Police Department

March 2022 Crime Data

April 5, 2022

Prepared by:
David Sparks, CCIA

*Numbers in this report may be updated from month to month as records updates occur.
The information contained in this report is primarily raw data until calendar year reporting.*

Distribution:

City Manager
Assistant City Managers
Chief of Police
Assistant Chief of Police
Major – Criminal Investigations
Major – Uniform
Major – Support Services
Investigations Captains
Uniform Captains

Professional Standards Lieutenant
Special Operations
Gang Unit
Accreditation Manager
Family Protection
Records Supervisor
Planning & Research
Training Supervisor

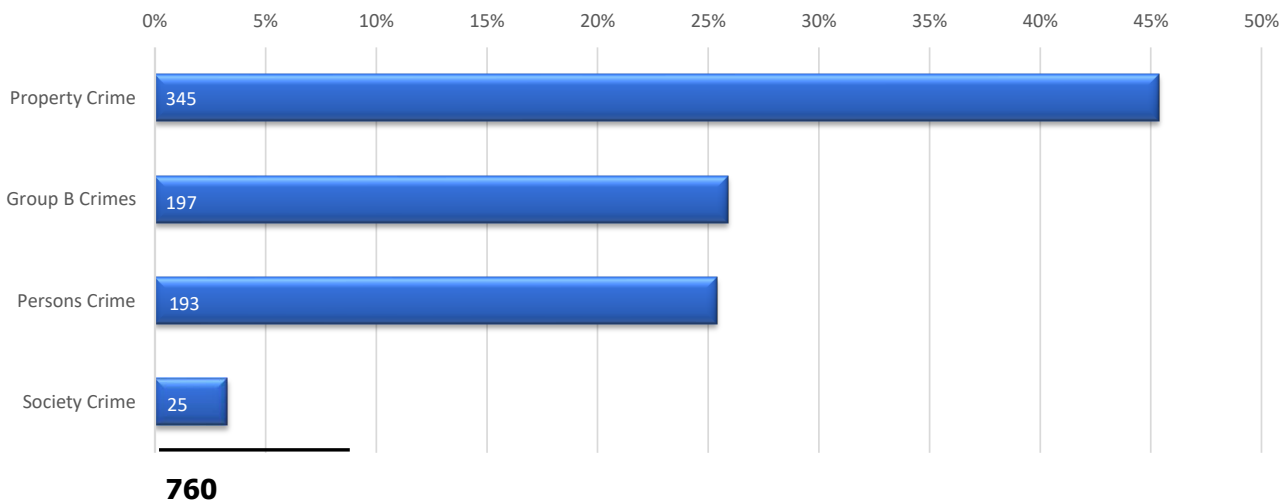
Albany Police Department NIBRS Profile

Type of Offense			Number of Incidents Reported				
			Mar 2022 Incidents	Mar 2022 Cleared	Percent Cleared	Feb 2022 Incidents	Monthly Change
NIBRS Group A Crimes Against Persons	09A-B	Homicide Offenses	0	0		0	
	09A	Murder	0	0		0	
	09B	Negligent Manslaughter	0	0		0	
	11A-D	Sex Offenses	9	7	78%	8	▲1
	11A	Forcible Rape	4	3	75%	4	
	11B-D	Other Forcible Sexual Offenses	5	4	80%	4	▲1
	13A-C	Assault Offenses	179	81	45%	157	▲22
	13A	Aggravated Assault	55	36	65%	53	▲2
	13B	Simple Assault	108	39	36%	83	▲25
	13C	Intimidation	16	6	38%	21	▼5
	36A-B	Sex Offenses, Nonforcible	0	0		2	▼2
	64A-B	Human Trafficking Offenses	0	0		0	
	100	Kidnapping / Abduction	5	1	20%	1	▲4
Crimes Against Persons Subtotal			193	89	46%	168	▲25
NIBRS Group A Crimes Against Property	120	Robbery	9	6	67%	7	▲2
		Armed Robbery	3	1	33%	2	▲1
		All Other Robbery	6	5	83%	5	▲1
	200	Arson	4	0	0%	3	▲1
	210	Extortion/Blackmail	0	0		0	
	220	Burglary/Breaking & Entering	33	1	3%	33	
		1st Degree Residential Burglary	18	1	6%	18	
		2nd Degree Business/Storage Burglary	15	0	0%	15	
	23A-H	Larceny/Theft Offenses	145	23	16%	165	▼20
	23 A-B	Pocket-Picking & Purse-Snatching	0	0		0	
	23C	Shoplifting	17	7	41%	44	▼27
	23D	Theft from Building	0	0		0	
	23E	Theft from Coin-Operated Machine	0	0		0	
	23F	Theft from Motor Vehicle	32	2	6%	34	▼2
	23G	Theft of Motor Vehicle Parts	11	0	0%	11	
	23H	All Other Larceny	85	14	16%	76	▲9
	240	Motor Vehicle Theft	21	2	10%	17	▲4
	250	Counterfeiting/Forgery	11	0	0%	7	▲4
	26A-G	Fraud Offenses	25	5	20%	18	▲7
	270	Embezzlement	0	0		0	
280	Stolen Property	1	2	200%	1		
290	Destruction/Vandalism of Property	96	19	20%	99	▼3	
510	Bribery	0	0		0		
Crimes Against Property Subtotal			345	58	17%	350	▼5
NIBRS Group A Crimes Against Society	35A-B	Drug/Narcotic Offenses	12	7	58%	10	▲2
	35A	Drug/Narcotic Violations	7	7	100%	7	
	35B	Drug Equipment Violations	5	0	0%	3	▲2
	370	Pornography/Obscene Material	1	0	0%	0	▲1
	39A-D	Gambling Offenses	0	0		0	
	40A-C	Prostitution Offenses	0	0		0	
	520	Weapon Law Violations	12	8	67%	8	▲4
	720	Animal Cruelty	0	0		0	
Crimes Against Society Subtotal			25	15	60%	18	▲7
NIBRS Group A Total			563	162	29%	536	▲27

Albany Police Department NIBRS Profile

Type of Offense			Number of Incidents Reported				
			Mar 2022 Incidents	Mar 2022 Cleared	Percent Cleared	Feb 2022 Incidents	Monthly Change
NIBRS Group B General Crimes	90A	Bad Checks	0	0	100%	1	▼1
	90B	Curfew/Loitering/Vagrancy	3	0	100%	2	▲1
	90C	Disorderly Conduct	66	47	71%	41	▲25
	90D	Driving Under the Influence	5	5	100%	19	▼14
	90E	Drunkenness	0	0		0	
	90F	Family Offenses, Nonviolent	34	13	38%	26	▲8
	90G	Liquor Law Violations	7	5	71%	8	▼1
	90H	Peeping Tom	0	0		0	
	90J	Trespass of Real Property	31	9	29%	25	▲6
	90Z	All Other Offenses	51	42	82%	57	▼6
Group B Totals			197	121	61%	179	▲18
NIBRS Group A & B Totals			760	283	37%	742	▲18

Monthly Crime Classification Summary



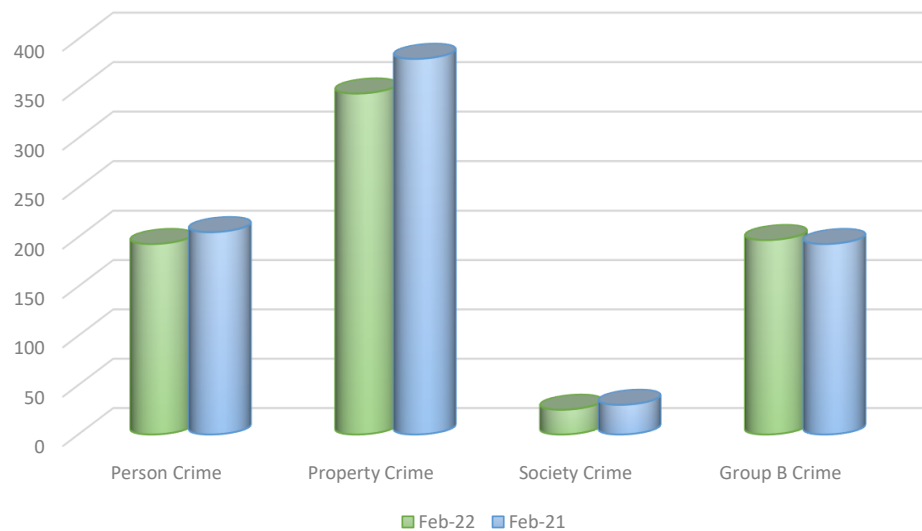
Albany Police Department NIBRS Annual Comparison

Type of Offense			Number of Incidents Reported					
			Mar 2022 Incidents	Mar 2021 Incidents	% Chg	2022 Year to Date	2021 Year to Date	% Chg
NIBRS Group A Crimes Against Persons	09A-B	Homicide Offenses	0	2	-100.0%	1	6	-83.3%
	09A	Murder	0	2	-100.0%	1	6	-83.3%
	09B	Negligent Manslaughter	0	0		0	0	
	11A-D	Sex Offenses	9	8	12.5%	27	17	58.8%
	11A	Forcible Rape	4	1	300.0%	11	4	175.0%
	11B-D	Other Forcible Sexual Offenses	5	7	-28.6%	16	13	23.1%
	13A-C	Assault Offenses	179	188	-4.8%	475	466	1.9%
	13A	Aggravated Assault	55	53	3.8%	158	142	11.3%
	13B	Simple Assault	108	109	-0.9%	266	273	-2.6%
	13C	Intimidation	16	26	-38.5%	51	51	0.0%
	36A-B	Sex Offenses, Nonforcible	0	0	100%	2	0	100%
	64A-B	Human Trafficking Offenses	0	1	-100.0%	2	1	100.0%
100	Kidnapping / Abduction	5	6	-16.7%	9	11	-18.2%	
Crimes Against Persons Subtotal			193	205	-5.9%	516	501	3.0%
NIBRS Group A Crimes Against Property	120	Robbery	9	6	50.0%	18	24	-25.0%
		Armed Robbery	3	2	50.0%	5	9	-44.4%
		All Other Robbery	6	4	50.0%	13	15	-13.3%
	200	Arson	4	0	100%	10	4	150.0%
	210	Extortion/Blackmail	0	0		0	0	
	220	Burglary/Breaking & Entering	33	34	-2.9%	95	123	-22.8%
		1st Degree Residential Burglary	18	23	-21.7%	58	75	-22.7%
		2nd Degree Business/Storage Burglary	15	11	36.4%	37	48	-22.9%
	23A-H	Larceny/Theft Offenses	145	169	-14.2%	456	532	-14.3%
	23 A-B	Pocket-Picking & Purse-Snatching	0	0		0	0	
	23C	Shoplifting	17	40	-57.5%	91	124	-26.6%
	23D	Theft from Building	0	0		0	0	
	23E	Theft from Coin-Operated Machine	0	0		0	0	
	23F	Theft from Motor Vehicle	32	23	39.1%	94	119	-21.0%
	23G	Theft of Motor Vehicle Parts	11	1	1000.0%	36	1	3500.0%
	23H	All Other Larceny	85	105	-19.0%	235	288	-18.4%
	240	Motor Vehicle Theft	21	28	-25.0%	65	106	-38.7%
	250	Counterfeiting/Forgery	11	12	-8.3%	31	26	19.2%
	26A-G	Fraud Offenses	25	29	-13.8%	69	76	-9.2%
270	Embezzlement	0	0		0	0		
280	Stolen Property	1	2	-50.0%	3	3	0.0%	
290	Destruction/Vandalism of Property	96	100	-4.0%	297	295	0.7%	
510	Bribery	0	0		0	0		
Crimes Against Property Subtotal			345	380	-9.2%	1044	1189	-12.2%
NIBRS Group A Crimes Against Society	35A-B	Drug/Narcotic Offenses	12	22	-45.5%	24	41	-41.5%
	35A	Drug/Narcotic Violations	7	15	-53.3%	16	24	-33.3%
	35B	Drug Equipment Violations	5	7	-28.6%	8	17	-52.9%
	370	Pornography/Obscene Material	1	2	-50.0%	2	2	0.0%
	39A-D	Gambling Offenses	0	0		0	0	
	40A-C	Prostitution Offenses	0	0		0	0	100%
	520	Weapon Law Violations	12	5	140.0%	30	20	50.0%
	720	Animal Cruelty	0	1	-100.0%	1	2	-50.0%
Crimes Against Society Subtotal			25	30	-16.7%	57	65	-12.3%
NIBRS Group A Total			563	615	-8.5%	1617	1755	-7.9%

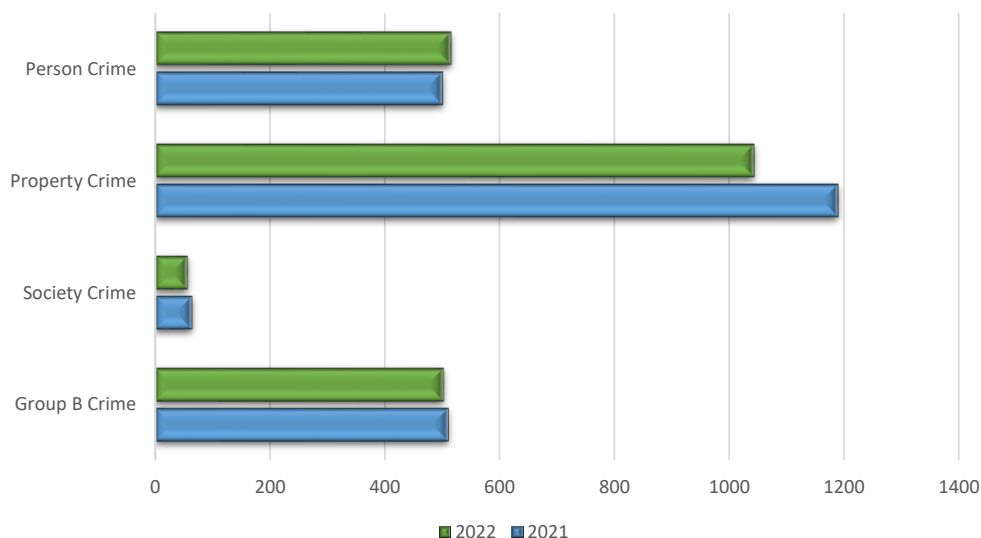
Albany Police Department NIBRS Annual Comparison

Type of Offense			Number of Incidents Reported					
			Mar 2022 Incidents	Mar 2021 Incidents	% Chg	2022 Year to Date	2021 Year to Date	% Chg
NIBRS Group B General Crimes	90A	Bad Checks	0	1	-100.0%	1	1	0.0%
	90B	Curfew/Loitering/Vagrancy	3	5	-40.0%	7	9	-22.2%
	90C	Disorderly Conduct	66	61	8.2%	144	165	-12.7%
	90D	Driving Under the Influence	5	12	-58.3%	34	39	-12.8%
	90E	Drunkenness	0	0		0	0	
	90F	Family Offenses, Nonviolent	34	29	17.2%	87	84	3.6%
	90G	Liquor Law Violations	7	10	-30.0%	18	24	-25.0%
	90H	Peeping Tom	0	0		0	0	
	90J	Trespass of Real Property	31	31	0.0%	73	85	-14.1%
	90Z	All Other Offenses	51	44	15.9%	139	104	33.7%
Group B Totals			197	193	2.1%	503	511	-1.6%
NIBRS Group A & B Totals			760	816	-6.9%	2120	2266	-6.4%

March 2022 v. March 2021

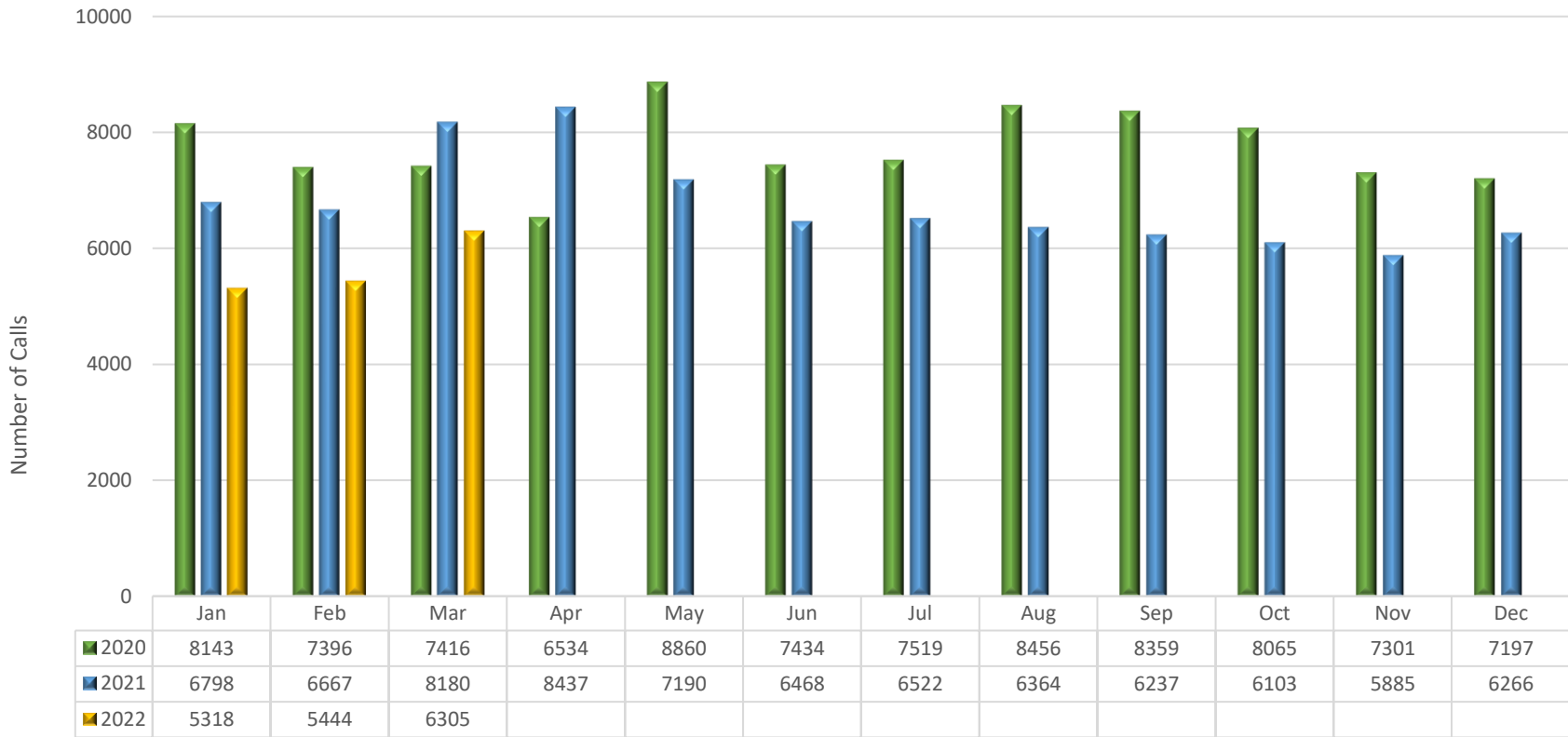


Year to Date 2022 v. 2021



Calls for Service by Month

Albany Police Department

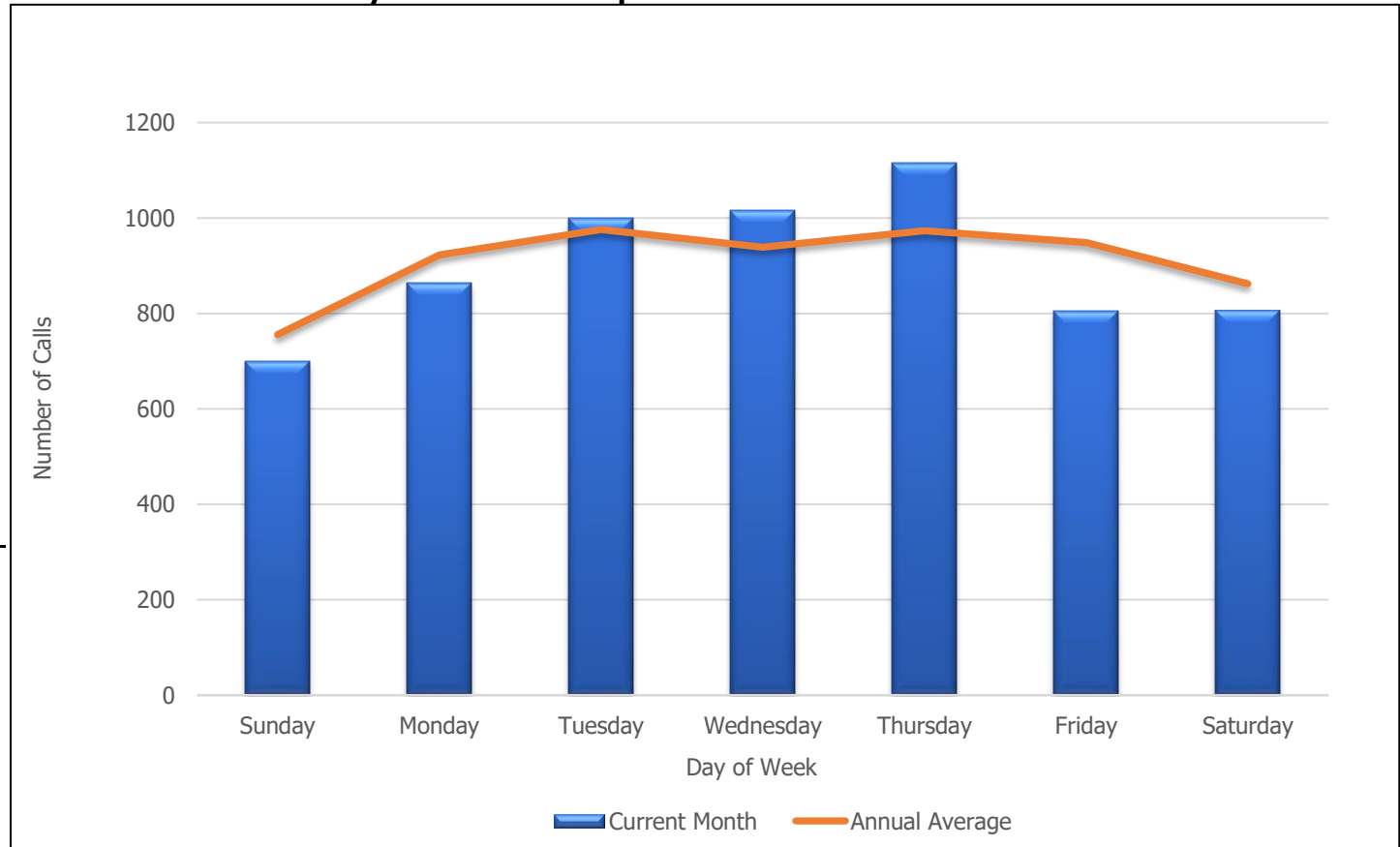


■ 2020 ■ 2021 ■ 2022

Monthly Calls for Service by Day of Week

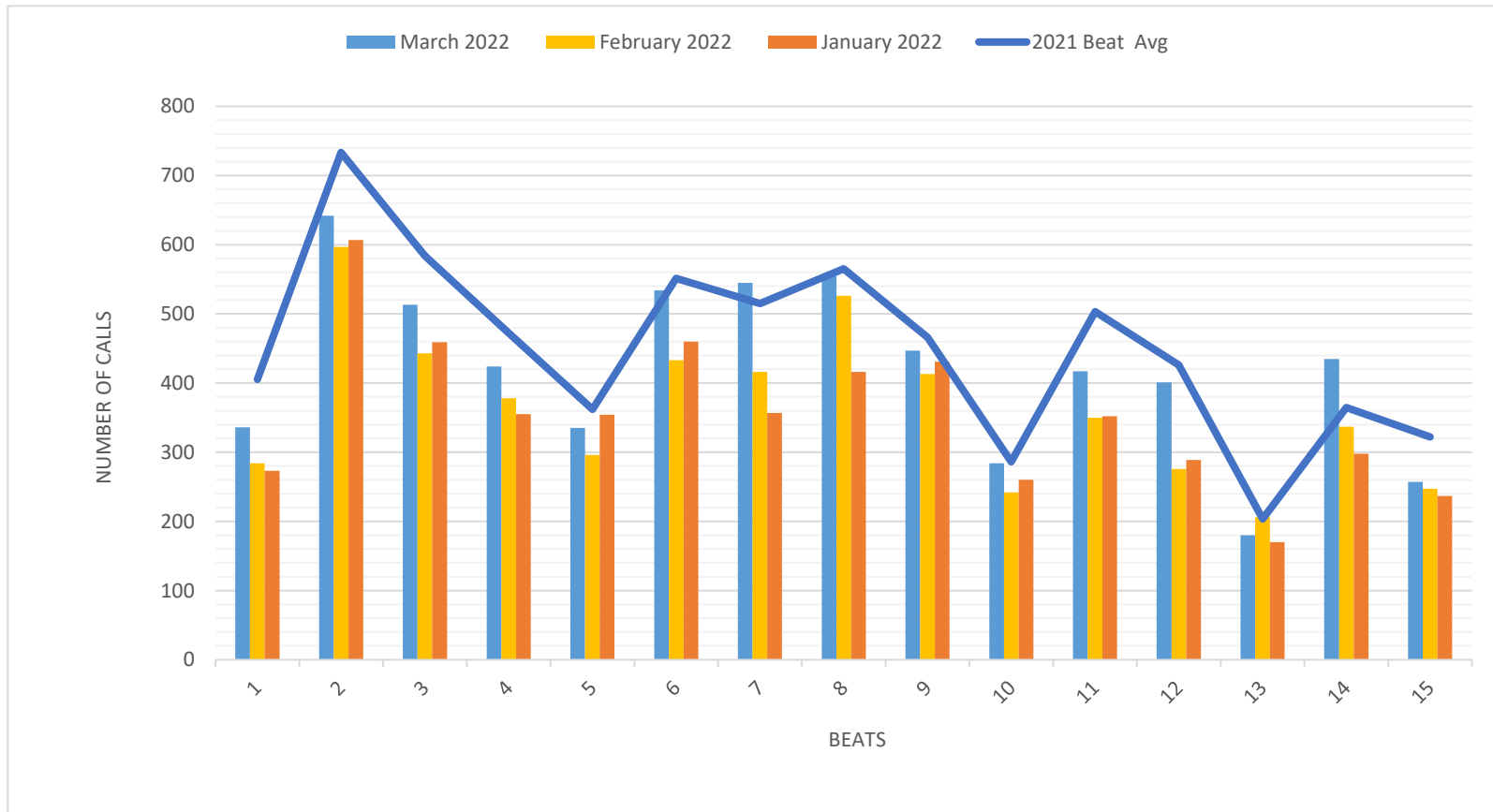
Albany Police Department

Calls For Service	
Day	Mar 2022
Sunday	700
Monday	863
Tuesday	1000
Wednesday	1016
Thursday	1115
Friday	805
Saturday	806
	<hr/>
	6305



Calls for Service by Beat

Albany Police Department



Beats	1	2	3	4	5	6	7	8	9	10	11	12	13	14	15
March 2022	336	642	513	424	335	534	545	555	447	284	417	401	180	435	257
February 2022	284	597	443	378	296	433	416	526	413	242	350	276	206	337	247
January 2022	273	607	459	355	354	460	357	416	431	260	352	289	170	298	237
2021 Beat Avg	405	733	584	473	362	552	515	565	466	286	503	426	204	365	322

Albany Police Department Patrol Beats

