



Police Department

October 2022 Crime Data

November 4, 2022

Prepared by:
David Sparks, CCIA

*Numbers in this report may be updated from month to month as records updates occur.
The information contained in this report is primarily raw data until calendar year reporting.*

Distribution:

City Manager
Assistant City Managers
Chief of Police
Assistant Chief of Police
Major – Criminal Investigations
Major – Uniform
Major – Support Services
Investigations Captains
Uniform Captains

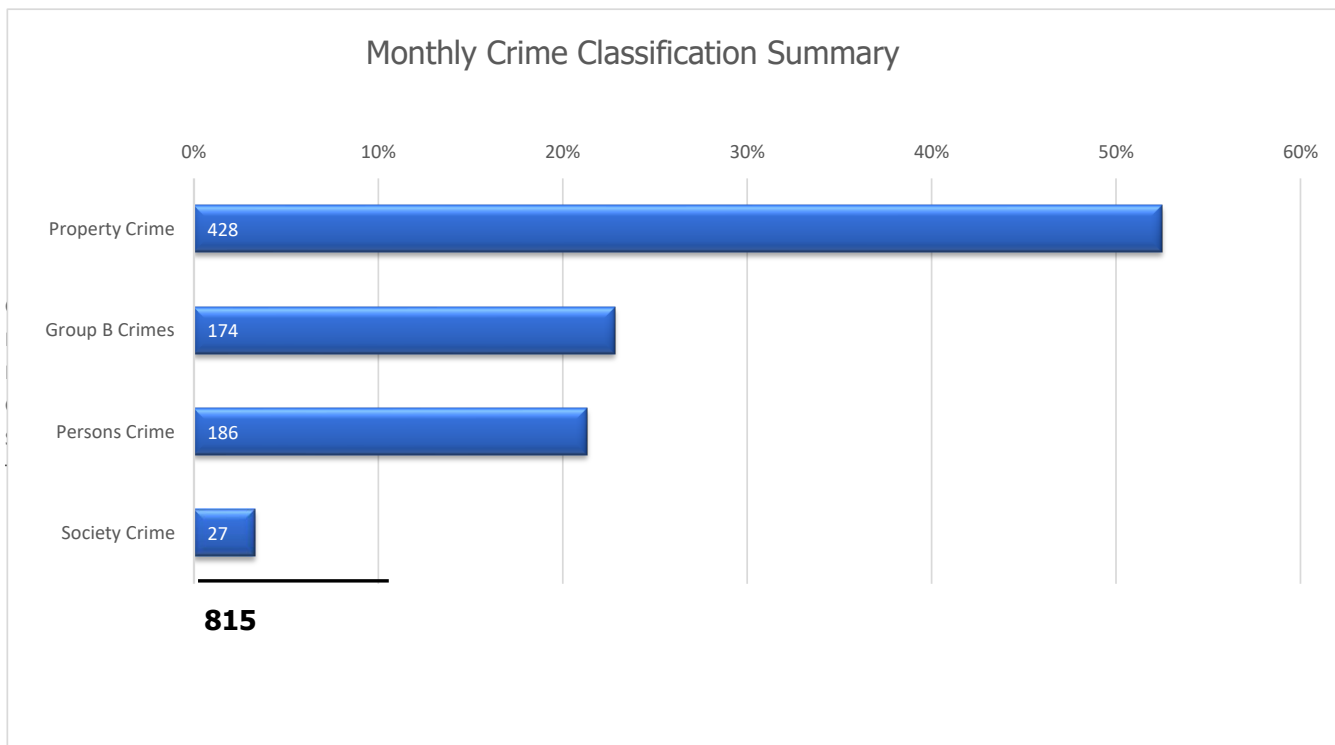
Professional Standards Lieutenant
Special Operations
Gang Unit
Accreditation Manager
Family Protection
Records Supervisor
Planning & Research
Training Supervisor

Albany Police Department NIBRS Profile

Type of Offense			Number of Incidents Reported				
			Oct 2022 Incidents	Oct 2022 Cleared	Percent Cleared	Sep 2022 Incidents	Monthly Change
NIBRS Group A Crimes Against Persons	09A-B	Homicide Offenses	3	1	33%	0	▲3
	09A	Murder	3	1	33%	0	▲3
	09B	Negligent Manslaughter	0	0		0	
	11A-D	Sex Offenses	10	1	10%	12	▼2
	11A	Forcible Rape	4	1	25%	1	▲3
	11B-D	Other Forcible Sexual Offenses	6	0	0%	11	▼5
	13A-C	Assault Offenses	161	64	40%	148	▲13
	13A	Aggravated Assault	54	22	41%	29	▲25
	13B	Simple Assault	88	32	36%	93	▼5
	13C	Intimidation	19	10	53%	26	▼7
	36A-B	Sex Offenses, Nonforcible	0	0		0	
	64A-B	Human Trafficking Offenses	0	0		0	
	100	Kidnapping / Abduction	0	1		4	▼4
Crimes Against Persons Subtotal			174	67	39%	164	▲10
NIBRS Group A Crimes Against Property	120	Robbery	12	2	17%	10	▲2
		Armed Robbery	4	1	25%	5	▼1
		All Other Robbery	8	1	13%	5	▲3
	200	Arson	4	1	25%	4	
	210	Extortion/Blackmail	0	0		0	
	220	Burglary/Breaking & Entering	26	9	35%	42	▼16
		1st Degree Residential Burglary	18	5	28%	22	▼4
		2nd Degree Business/Storage Burglary	8	4	50%	20	▼12
	23A-H	Larceny/Theft Offenses	202	26	13%	193	▲9
	23 A-B	Pocket-Picking & Purse-Snatching	1	0	0%	0	▲1
	23C	Shoplifting	43	10	23%	44	▼1
	23D	Theft from Building	0	0		2	▼2
	23E	Theft from Coin-Operated Machine	0	0		0	
	23F	Theft from Motor Vehicle	59	4	7%	32	▲27
	23G	Theft of Motor Vehicle Parts	8	0	0%	2	▲6
	23H	All Other Larceny	91	12	13%	113	▼22
	240	Motor Vehicle Theft	31	2	6%	28	▲3
	250	Counterfeiting/Forgery	15	3	20%	16	▼1
	26A-G	Fraud Offenses	33	1	3%	29	▲4
	270	Embezzlement	0	0		0	
280	Stolen Property	1	2	200%	6	▼5	
290	Destruction/Vandalism of Property	104	18	17%	98	▲6	
510	Bribery	0	0		0		
Crimes Against Property Subtotal			428	64	15%	426	▲2
NIBRS Group A Crimes Against Society	35A-B	Drug/Narcotic Offenses	16	14	88%	9	▲7
	35A	Drug/Narcotic Violations	11	9	82%	2	▲9
	35B	Drug Equipment Violations	5	5	100%	7	▼2
	370	Pornography/Obscene Material	0	0		3	▼3
	39A-D	Gambling Offenses	0	0		0	
	40A-C	Prostitution Offenses	0	0		1	▼1
	520	Weapon Law Violations	9	3	33%	9	
	720	Animal Cruelty	2	0	0%	0	▲2
Crimes Against Society Subtotal			27	17	63%	22	▲5
NIBRS Group A Total			629	148	24%	612	▲17

Albany Police Department NIBRS Profile

Type of Offense			Number of Incidents Reported				
			Oct 2022 Incidents	Oct 2022 Cleared	Percent Cleared	Sep 2022 Incidents	Monthly Change
NIBRS Group B General Crimes	90A	Bad Checks	1	0	0%	1	
	90B	Curfew/Loitering/Vagrancy	5	4	80%	4	▲1
	90C	Disorderly Conduct	85	38	45%	75	▲10
	90D	Driving Under the Influence	10	9	90%	5	▲5
	90E	Drunkenness	0	0		0	
	90F	Family Offenses, Nonviolent	23	14	61%	22	▲1
	90G	Liquor Law Violations	9	8	89%	7	▲2
	90H	Peeping Tom	0	0		0	
	90J	Trespass of Real Property	23	6	26%	27	▼4
	90Z	All Other Offenses	30	26	87%	51	▼21
Group B Totals			186	105	56%	192	▼6
NIBRS Group A & B Totals			815	253	31%	804	▲11

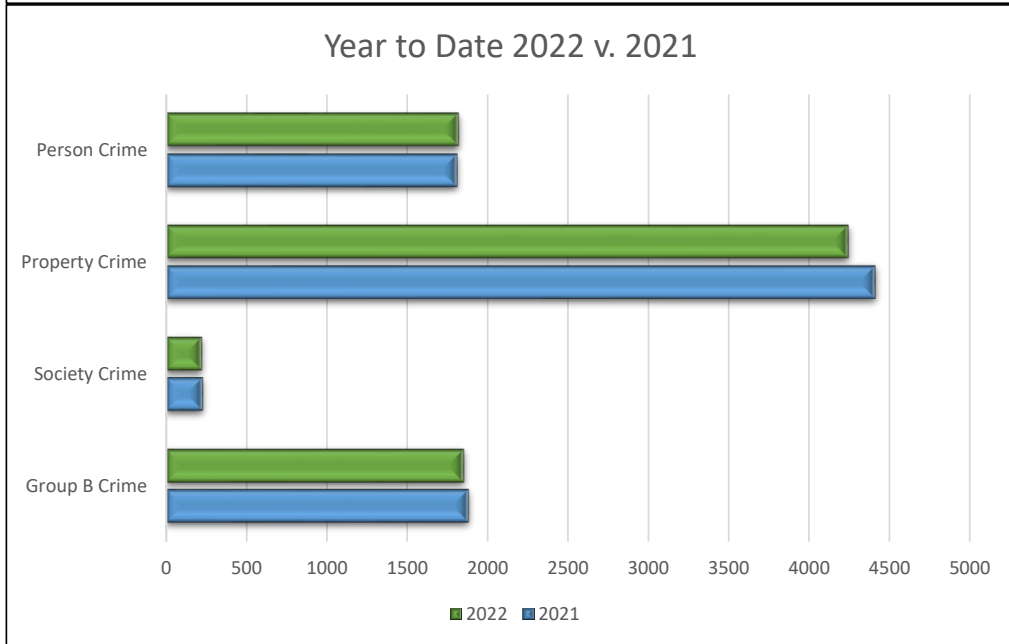


Albany Police Department NIBRS Annual Comparison

Type of Offense			Number of Incidents Reported					
			Oct 2022 Incidents	Oct 2021 Incidents	% Chg	2022 Year to Date	2021 Year to Date	% Chg
NIBRS Group A Crimes Against Persons	09A-B	Homicide Offenses	3	0		14	14	0.0%
	09A	Murder	3	0		14	13	7.7%
	09B	Negligent Manslaughter	0	0		0	1	-100.0%
	11A-D	Sex Offenses	10	5	100.0%	88	88	0.0%
	11A	Forcible Rape	4	1	300.0%	25	35	-28.6%
	11B-D	Other Forcible Sexual Offenses	6	4	50.0%	63	53	18.9%
	13A-C	Assault Offenses	161	187	-13.9%	1690	1668	1.3%
	13A	Aggravated Assault	54	77	-29.9%	484	541	-10.5%
	13B	Simple Assault	88	93	-5.4%	990	935	5.9%
	13C	Intimidation	19	17	11.8%	216	192	12.5%
	36A-B	Sex Offenses, Nonforcible	0	1	-100.0%	4	5	-20.0%
	64A-B	Human Trafficking Offenses	0	0		5	6	-17%
100	Kidnapping / Abduction	0	4	-100.0%	22	31	-29.0%	
Crimes Against Persons Subtotal			174	197	-11.7%	1823	1812	0.6%
NIBRS Group A Crimes Against Property	120	Robbery	12	9	33.3%	74	91	-18.7%
		Armed Robbery	4	3	33.3%	26	32	-18.8%
		All Other Robbery	8	6	33.3%	48	59	-18.6%
	200	Arson	4	2	100.0%	33	20	65.0%
	210	Extortion/Blackmail	0	0		1	0	
	220	Burglary/Breaking & Entering	26	37	-29.7%	394	407	-3.2%
		1st Degree Residential Burglary	18	25	-28.0%	247	270	-8.5%
		2nd Degree Business/Storage Burglary	8	12	-33.3%	147	137	7.3%
	23A-H	Larceny/Theft Offenses	202	195	3.6%	1863	1982	-6.0%
	23 A-B	Pocket-Picking & Purse-Snatching	1	1	0.0%	2	1	100.0%
	23C	Shoplifting	43	38	13.2%	354	367	-3.5%
	23D	Theft from Building	0	0		3	4	-25.0%
	23E	Theft from Coin-Operated Machine	0	0		0	0	
	23F	Theft from Motor Vehicle	59	62	-4.8%	474	501	-5.4%
	23G	Theft of Motor Vehicle Parts	8	7	14.3%	73	54	35.2%
	23H	All Other Larceny	91	87	4.6%	957	1055	-9.3%
	240	Motor Vehicle Theft	31	32	-3.1%	272	338	-19.5%
	250	Counterfeiting/Forgery	15	20	-25.0%	145	105	38.1%
	26A-G	Fraud Offenses	33	24	37.5%	273	275	-0.7%
270	Embezzlement	0	0		0	0		
280	Stolen Property	1	2	-50.0%	19	26	-26.9%	
290	Destruction/Vandalism of Property	104	110	-5.5%	1173	1171	0.2%	
510	Bribery	0	0		0	0		
Crimes Against Property Subtotal			428	431	-0.7%	4247	4415	-3.8%
NIBRS Group A Crimes Against Society	35A-B	Drug/Narcotic Offenses	16	5	220.0%	115	106	8.5%
	35A	Drug/Narcotic Violations	11	3	266.7%	75	62	21.0%
	35B	Drug Equipment Violations	5	2	150.0%	40	44	-9.1%
	370	Pornography/Obscene Material	0	1	-100.0%	8	5	60.0%
	39A-D	Gambling Offenses	0	0		0	0	
	40A-C	Prostitution Offenses	0	0		1	1	0.0%
	520	Weapon Law Violations	9	11	-18.2%	94	95	-1.1%
	720	Animal Cruelty	2	3	-33.3%	7	23	-69.6%
Crimes Against Society Subtotal			27	20	35.0%	225	230	-2.2%
NIBRS Group A Total			629	648	-2.9%	6295	6457	-2.5%

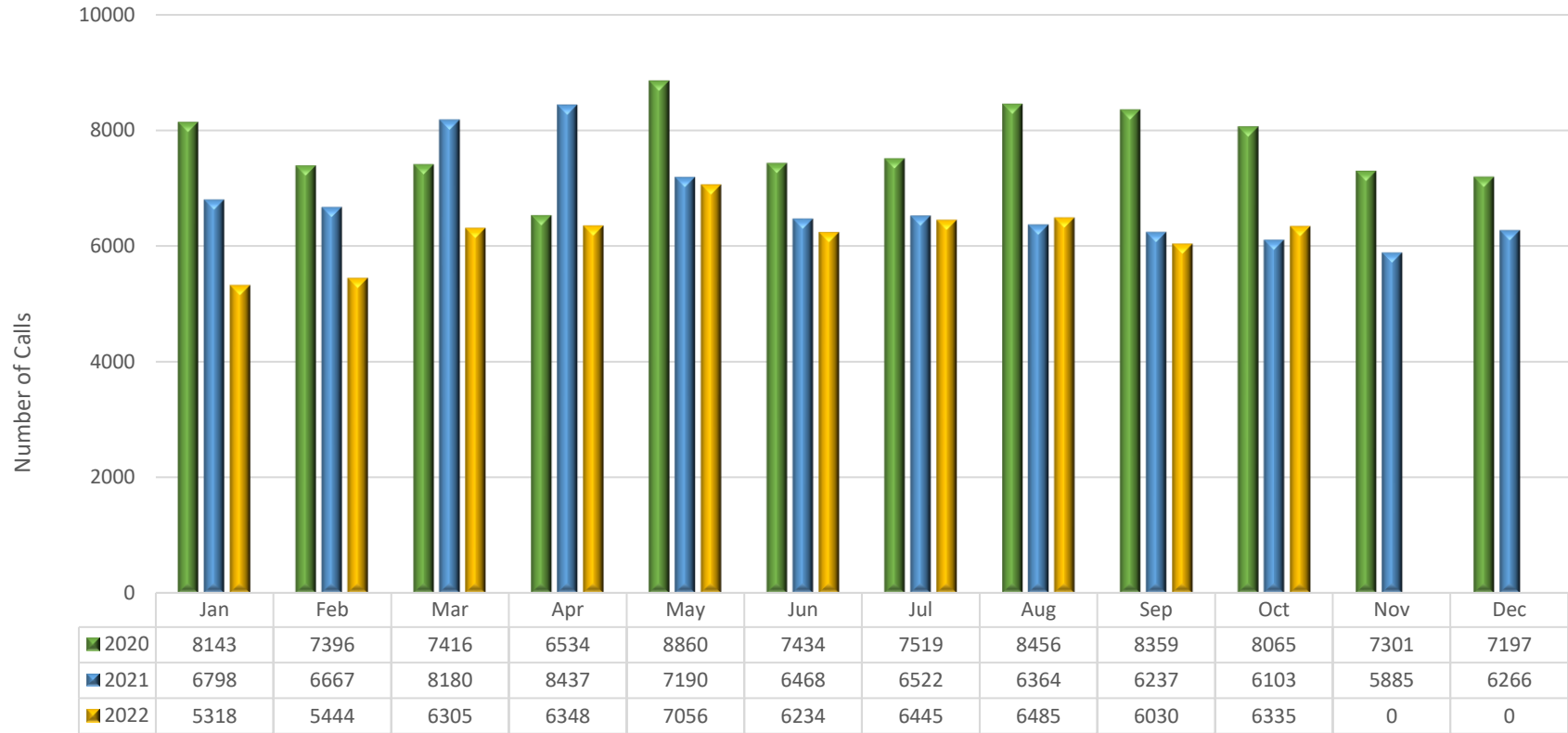
Albany Police Department NIBRS Annual Comparison

Type of Offense			Number of Incidents Reported					
			Oct 2022 Incidents	Oct 2021 Incidents	% Chg	2022 Year to Date	2021 Year to Date	% Chg
NIBRS Group B General Crimes	90A	Bad Checks	1	0		6	12	-50.0%
	90B	Curfew/Loitering/Vagrancy	5	0		44	38	15.8%
	90C	Disorderly Conduct	85	0		641	661	-3.0%
	90D	Driving Under the Influence	10	0		113	110	2.7%
	90E	Drunkenness	0	0		0	0	
	90F	Family Offenses, Nonviolent	23	31	-25.8%	253	294	-13.9%
	90G	Liquor Law Violations	9	10	-10.0%	60	63	-4.8%
	90H	Peeping Tom	0	0		0	0	
	90J	Trespass of Real Property	23	29	-20.7%	291	307	-5.2%
	90Z	All Other Offenses	30	33	-9.1%	447	398	12.3%
Group B Totals			186	171	8.8%	1855	1883	-1.5%
NIBRS Group A & B Totals			815	819	-0.5%	8150	8340	-2.3%



Calls for Service by Month

Albany Police Department

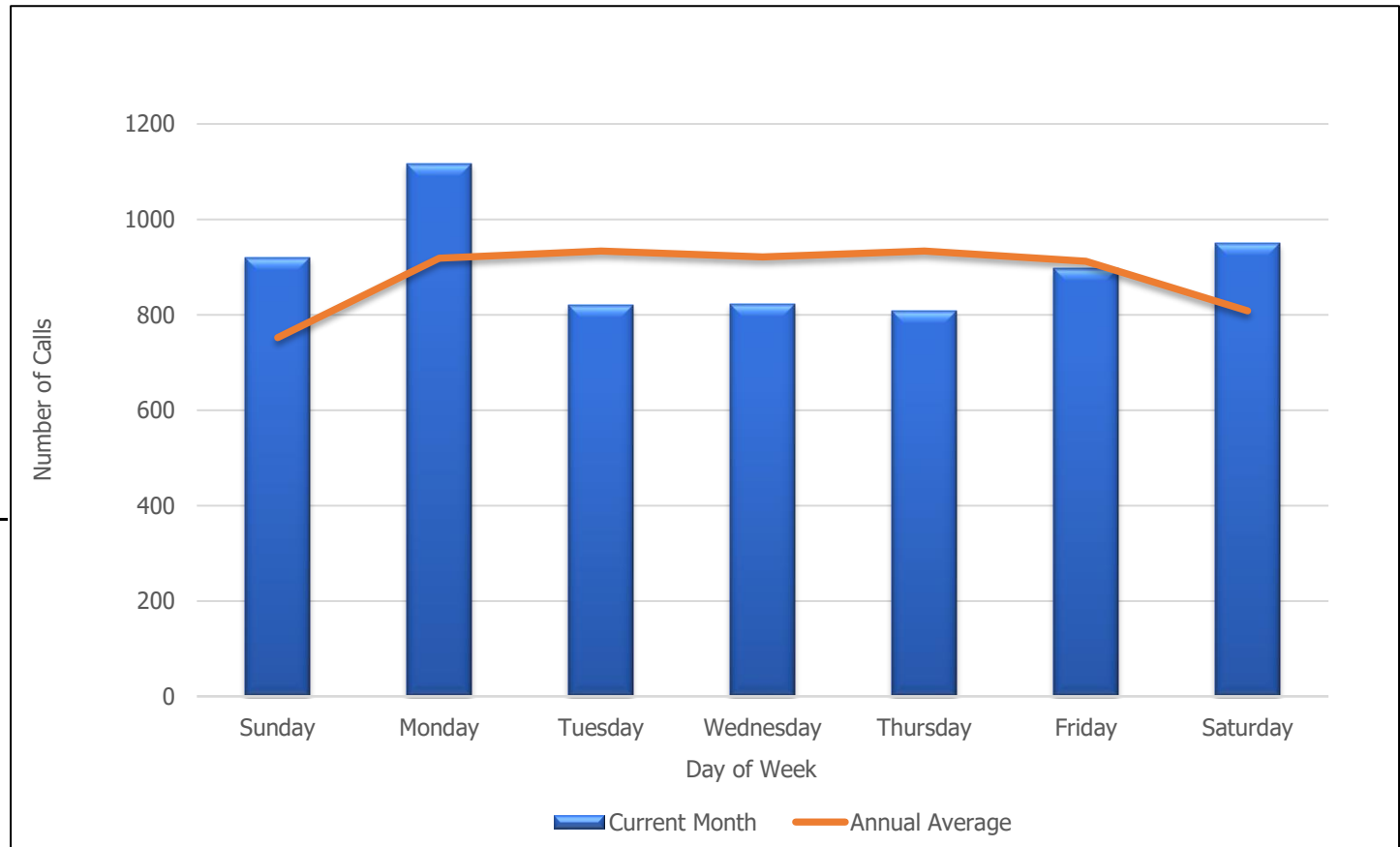


■ 2020
 ■ 2021
 ■ 2022

Monthly Calls for Service by Day of Week

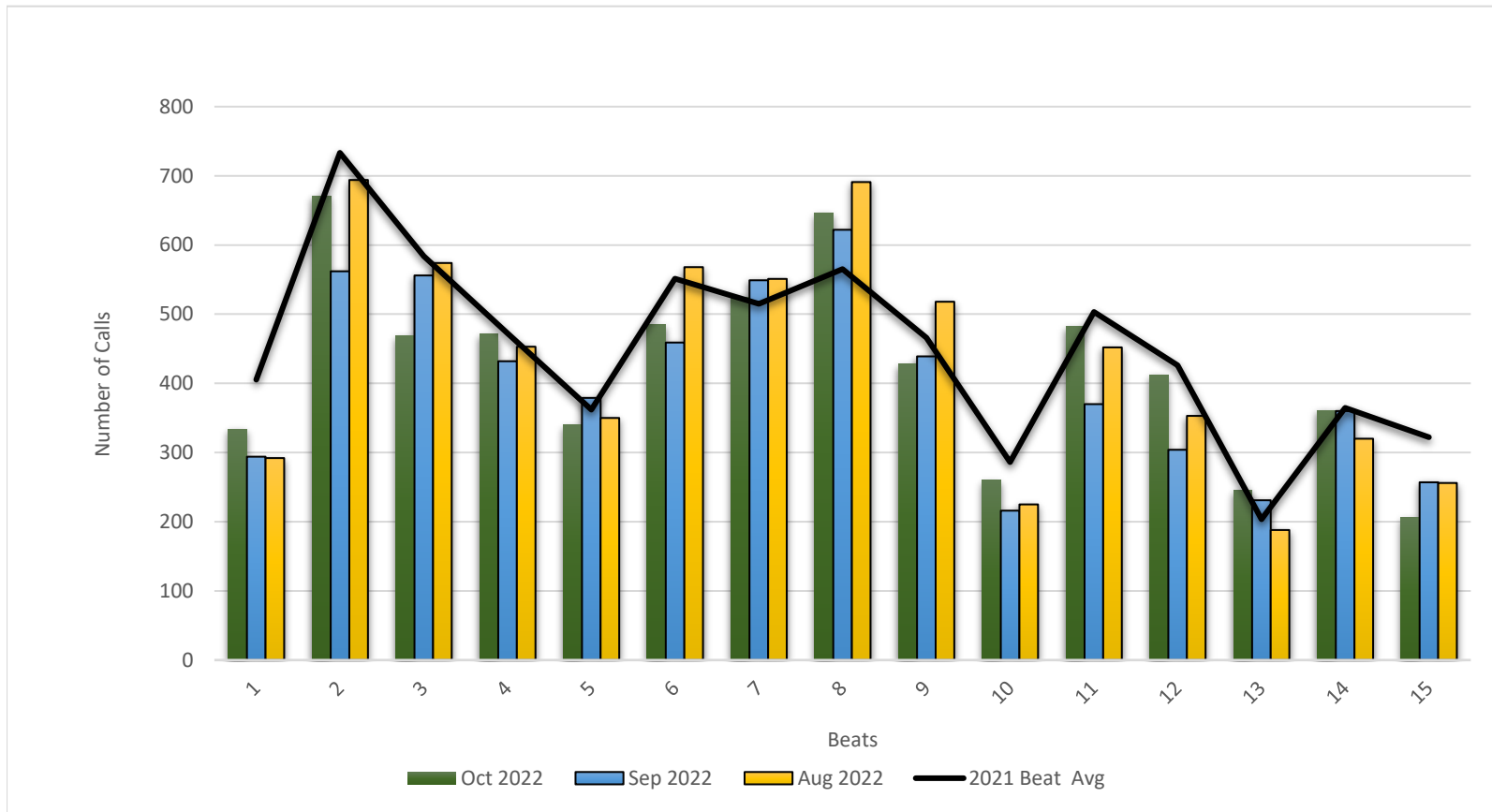
Albany Police Department

Calls For Service	
Day	Oct 2022
Sunday	920
Monday	1117
Tuesday	821
Wednesday	823
Thursday	807
Friday	897
Saturday	950
	<hr/>
	6335



Calls for Service by Beat

Albany Police Department



Beats	1	2	3	4	5	6	7	8	9	10	11	12	13	14	15
Oct 2022	334	671	469	471	340	485	525	646	428	260	482	412	245	361	206
Sep 2022	294	562	556	432	379	459	549	622	439	216	370	304	231	360	257
Aug 2022	292	694	574	453	350	568	551	691	518	225	452	353	188	320	256
2021 Beat Avg	405	733	584	473	362	552	515	565	466	286	503	426	204	365	322

Albany Police Department Patrol Beats

