



Police Department

November 2022 Crime Data

December 6, 2022

Prepared by:
David Sparks, CCIA

*Numbers in this report may be updated from month to month as records updates occur.
The information contained in this report is primarily raw data until calendar year reporting.*

Distribution:

City Manager
Assistant City Managers
Chief of Police
Major – Criminal Investigations
Major – Uniform
Major – Support Services
Investigations Captains
Uniform Captains

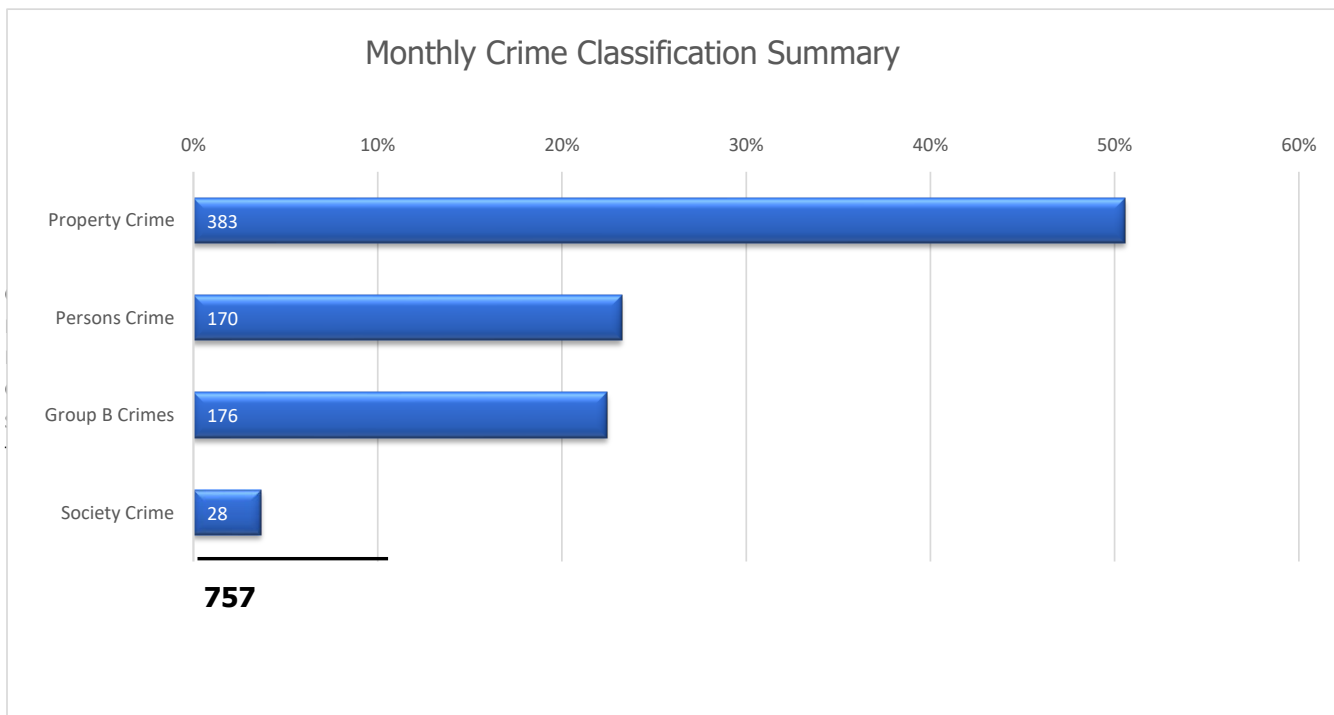
Professional Standards Captain
Special Operations
Gang Unit
Accreditation Manager
Family Protection
Records Supervisor
Planning & Research
Training Supervisor

Albany Police Department NIBRS Profile

Type of Offense			Number of Incidents Reported				
			Nov 2022 Incidents	Nov 2022 Cleared	Percent Cleared	Oct 2022 Incidents	Monthly Change
NIBRS Group A Crimes Against Persons	09A-B	Homicide Offenses	2	0	0%	2	
	09A	Murder	2	0	0%	2	
	09B	Negligent Manslaughter	0	0		0	
	11A-D	Sex Offenses	8	3	38%	10	▼2
	11A	Forcible Rape	2	0	0%	4	▼2
	11B-D	Other Forcible Sexual Offenses	6	3	50%	6	
	13A-C	Assault Offenses	163	45	28%	161	▲2
	13A	Aggravated Assault	45	11	24%	54	▼9
	13B	Simple Assault	96	27	28%	88	▲8
	13C	Intimidation	22	7	32%	19	▲3
	36A-B	Sex Offenses, Nonforcible	1	0	0%	0	▲1
	64A-B	Human Trafficking Offenses	1	0	0%	0	▲1
	100	Kidnapping / Abduction	1	0	0%	0	▲1
Crimes Against Persons Subtotal			176	48	27%	173	▲3
NIBRS Group A Crimes Against Property	120	Robbery	7	1	14%	12	▼5
		Armed Robbery	2	0	0%	4	▼2
		All Other Robbery	5	1	20%	8	▼3
	200	Arson	3	1	33%	4	▼1
	210	Extortion/Blackmail	0	0		0	
	220	Burglary/Breaking & Entering	24	2	8%	26	▼2
		1st Degree Residential Burglary	18	1	6%	18	
		2nd Degree Business/Storage Burglary	6	1	17%	8	▼2
	23A-H	Larceny/Theft Offenses	185	19	10%	202	▼17
	23 A-B	Pocket-Picking & Purse-Snatching	0	0		1	▼1
	23C	Shoplifting	46	11	24%	43	▲3
	23D	Theft from Building	0	0		0	
	23E	Theft from Coin-Operated Machine	0	0		0	
	23F	Theft from Motor Vehicle	40	2	5%	59	▼19
	23G	Theft of Motor Vehicle Parts	4	0	0%	8	▼4
	23H	All Other Larceny	95	6	6%	91	▲4
	240	Motor Vehicle Theft	31	2	6%	31	
	250	Counterfeiting/Forgery	15	1	7%	15	
	26A-G	Fraud Offenses	18	6	33%	33	▼15
	270	Embezzlement	0	0		0	
280	Stolen Property	2	3	150%	1	▲1	
290	Destruction/Vandalism of Property	98	12	12%	104	▼6	
510	Bribery	0	0		0		
Crimes Against Property Subtotal			383	47	12%	428	▼45
NIBRS Group A Crimes Against Society	35A-B	Drug/Narcotic Offenses	11	10	91%	16	▼5
	35A	Drug/Narcotic Violations	7	7	100%	11	▼4
	35B	Drug Equipment Violations	4	3	75%	5	▼1
	370	Pornography/Obscene Material	2	0	0%	0	▲2
	39A-D	Gambling Offenses	0	0		0	
	40A-C	Prostitution Offenses	2	0	0%	0	▲2
	520	Weapon Law Violations	10	6	60%	9	▲1
	720	Animal Cruelty	3	0	0%	2	▲1
Crimes Against Society Subtotal			28	16	57%	27	▲1
NIBRS Group A Total			587	111	19%	628	▼41

Albany Police Department NIBRS Profile

Type of Offense			Number of Incidents Reported				
			Nov 2022 Incidents	Nov 2022 Cleared	Percent Cleared	Oct 2022 Incidents	Monthly Change
NIBRS Group B General Crimes	90A	Bad Checks	0	0		1	▼1
	90B	Curfew/Loitering/Vagrancy	0	0		5	▼5
	90C	Disorderly Conduct	63	30	48%	85	▼22
	90D	Driving Under the Influence	12	11	92%	10	▲2
	90E	Drunkenness	0	0		0	
	90F	Family Offenses, Nonviolent	26	7	27%	23	▲3
	90G	Liquor Law Violations	7	4	57%	9	▼2
	90H	Peeping Tom	0	0		0	
	90J	Trespass of Real Property	18	5	28%	23	▼5
	90Z	All Other Offenses	44	15	34%	30	▲14
Group B Totals			170	72	42%	186	▼16
NIBRS Group A & B Totals			757	183	24%	814	▼57

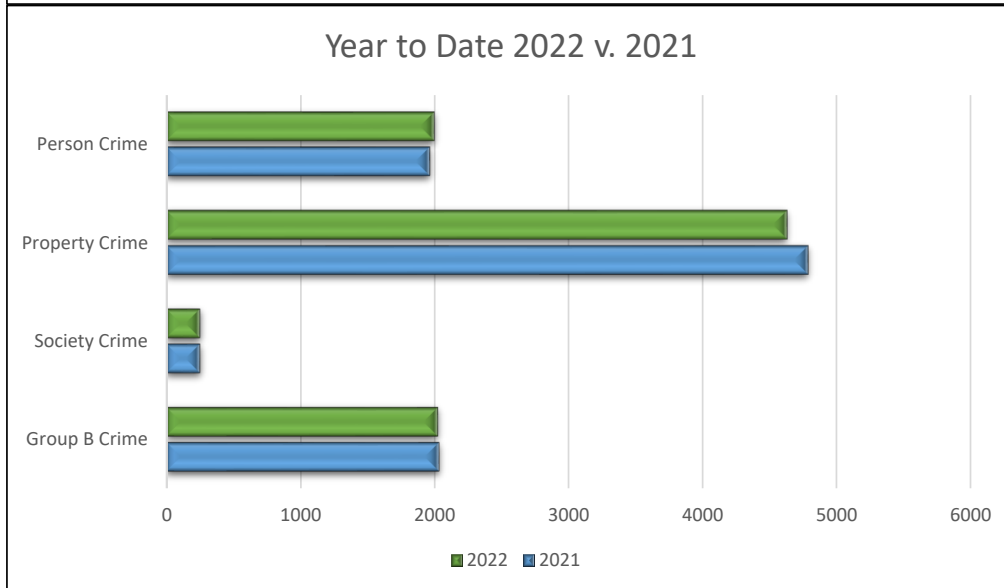
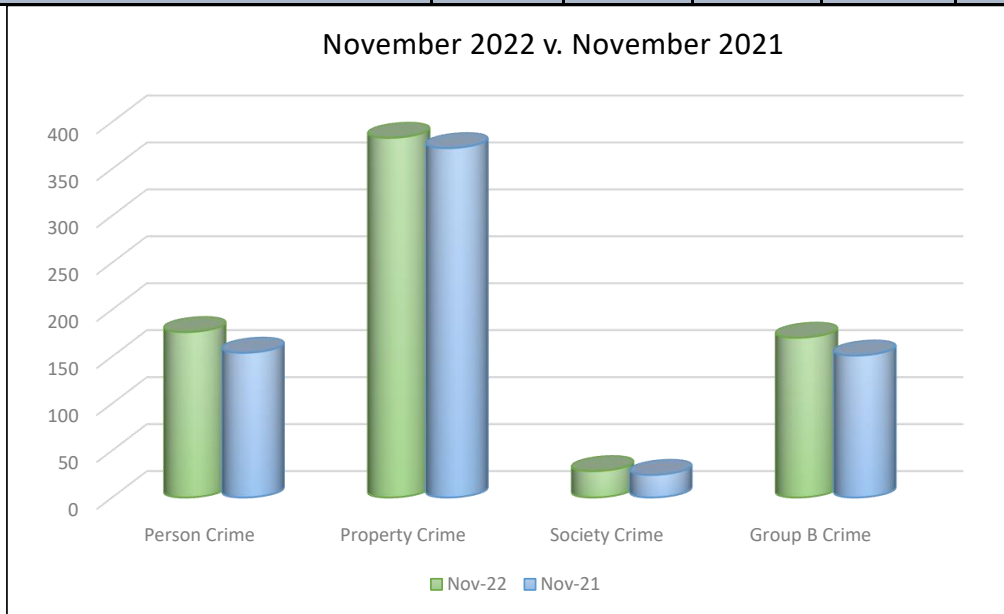


Albany Police Department NIBRS Annual Comparison

Type of Offense			Number of Incidents Reported					
			Nov 2022 Incidents	Nov 2021 Incidents	% Chg	2022 Year to Date	2021 Year to Date	% Chg
NIBRS Group A Crimes Against Persons	09A-B	Homicide Offenses	2	1	100.0%	15	15	0.0%
	09A	Murder	2	1	100.0%	15	14	7.1%
	09B	Negligent Manslaughter	0	0		0	1	-100.0%
	11A-D	Sex Offenses	8	8	0.0%	96	96	0.0%
	11A	Forcible Rape	2	2	0.0%	27	37	-27.0%
	11B-D	Other Forcible Sexual Offenses	6	6	0.0%	69	59	16.9%
	13A-C	Assault Offenses	163	142	14.8%	1853	1810	2.4%
	13A	Aggravated Assault	45	51	-11.8%	529	592	-10.6%
	13B	Simple Assault	96	78	23.1%	1086	1013	7.2%
	13C	Intimidation	22	13	69.2%	238	205	16.1%
	36A-B	Sex Offenses, Nonforcible	1	0		5	5	0.0%
	64A-B	Human Trafficking Offenses	1	0		6	6	0%
100	Kidnapping / Abduction	1	3	-66.7%	23	34	-32.4%	
Crimes Against Persons Subtotal			176	154	14.3%	1998	1966	1.6%
NIBRS Group A Crimes Against Property	120	Robbery	7	4	75.0%	81	95	-14.7%
		Armed Robbery	2	2	0.0%	28	34	-17.6%
		All Other Robbery	5	2	150.0%	53	61	-13.1%
	200	Arson	3	1	200.0%	36	21	71.4%
	210	Extortion/Blackmail	0	0		1	0	
	220	Burglary/Breaking & Entering	24	29	-17.2%	418	436	-4.1%
		1st Degree Residential Burglary	18	16	12.5%	265	286	-7.3%
		2nd Degree Business/Storage Burglary	6	13	-53.8%	153	150	2.0%
	23A-H	Larceny/Theft Offenses	185	174	6.3%	2048	2156	-5.0%
	23 A-B	Pocket-Picking & Purse-Snatching	0	0		2	1	100.0%
	23C	Shoplifting	46	43	7.0%	400	410	-2.4%
	23D	Theft from Building	0	0		3	4	-25.0%
	23E	Theft from Coin-Operated Machine	0	0		0	0	
	23F	Theft from Motor Vehicle	40	44	-9.1%	514	545	-5.7%
	23G	Theft of Motor Vehicle Parts	4	10	-60.0%	77	64	20.3%
	23H	All Other Larceny	95	77	23.4%	1052	1132	-7.1%
	240	Motor Vehicle Theft	31	25	24.0%	303	363	-16.5%
	250	Counterfeiting/Forgery	15	27	-44.4%	160	132	21.2%
	26A-G	Fraud Offenses	18	15	20.0%	291	290	0.3%
	270	Embezzlement	0	0		0	0	
280	Stolen Property	2	1	100.0%	21	27	-22.2%	
290	Destruction/Vandalism of Property	98	96	2.1%	1271	1267	0.3%	
510	Bribery	0	0		0	0		
Crimes Against Property Subtotal			383	372	3.0%	4630	4787	-3.3%
NIBRS Group A Crimes Against Society	35A-B	Drug/Narcotic Offenses	11	10	10.0%	126	116	8.6%
	35A	Drug/Narcotic Violations	7	9	-22.2%	82	71	15.5%
	35B	Drug Equipment Violations	4	1	300.0%	44	45	-2.2%
	370	Pornography/Obscene Material	2	0		10	5	100.0%
	39A-D	Gambling Offenses	0	0		0	0	
	40A-C	Prostitution Offenses	2	0		3	1	200.0%
	520	Weapon Law Violations	10	11	-9.1%	104	106	-1.9%
	720	Animal Cruelty	3	3	0.0%	10	26	-61.5%
Crimes Against Society Subtotal			28	24	16.7%	253	254	-0.4%
NIBRS Group A Total			587	550	6.7%	6881	7007	-1.8%

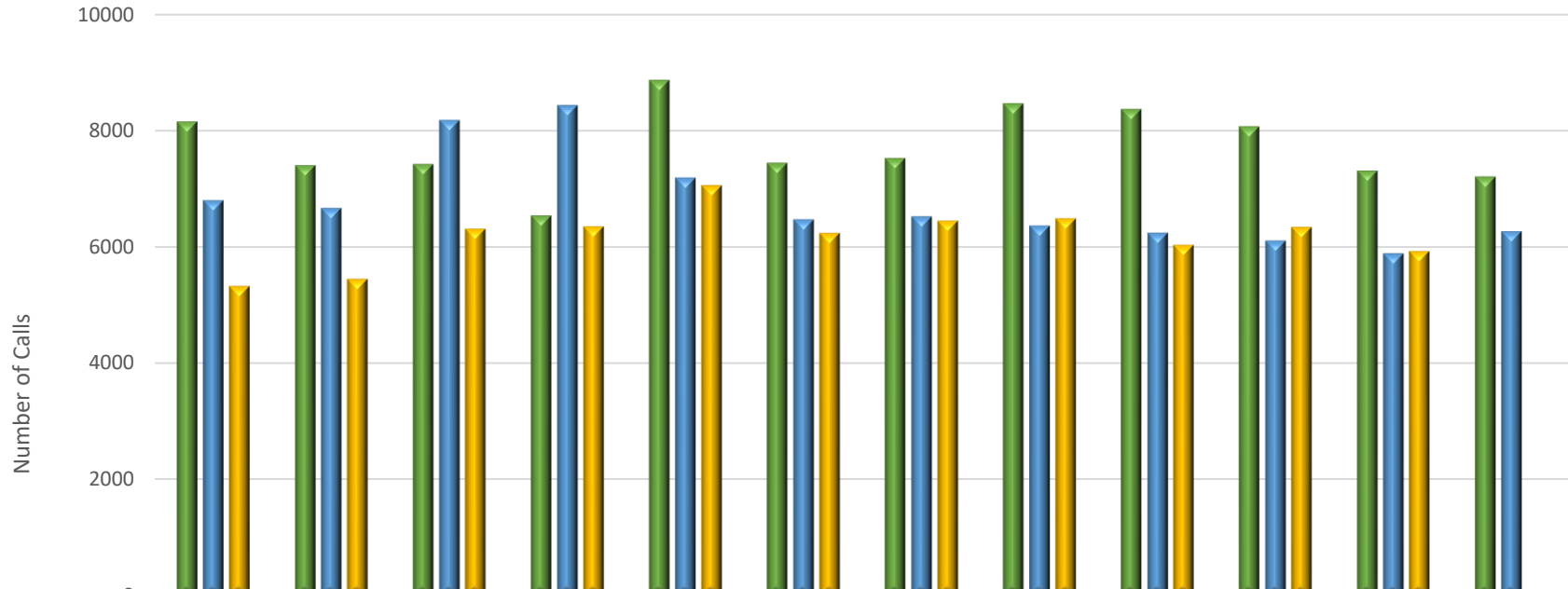
Albany Police Department NIBRS Annual Comparison

Type of Offense			Number of Incidents Reported					
			Nov 2022 Incidents	Nov 2021 Incidents	% Chg	2022 Year to Date	2021 Year to Date	% Chg
NIBRS Group B General Crimes	90A	Bad Checks	0	2	-100.0%	6	14	-57.1%
	90B	Curfew/Loitering/Vagrancy	0	2	-100.0%	44	40	10.0%
	90C	Disorderly Conduct	63	59	6.8%	704	720	-2.2%
	90D	Driving Under the Influence	12	10	20.0%	125	120	4.2%
	90E	Drunkenness	0	0		0	0	
	90F	Family Offenses, Nonviolent	26	24	8.3%	279	318	-12.3%
	90G	Liquor Law Violations	7	4	75.0%	67	67	0.0%
	90H	Peeping Tom	0	0		0	0	
	90J	Trespass of Real Property	18	19	-5.3%	309	326	-5.2%
	90Z	All Other Offenses	44	31	41.9%	491	429	14.5%
Group B Totals			170	151	12.6%	2025	2034	-0.4%
NIBRS Group A & B Totals			757	701	8.0%	8906	9041	-1.5%



Calls for Service by Month

Albany Police Department



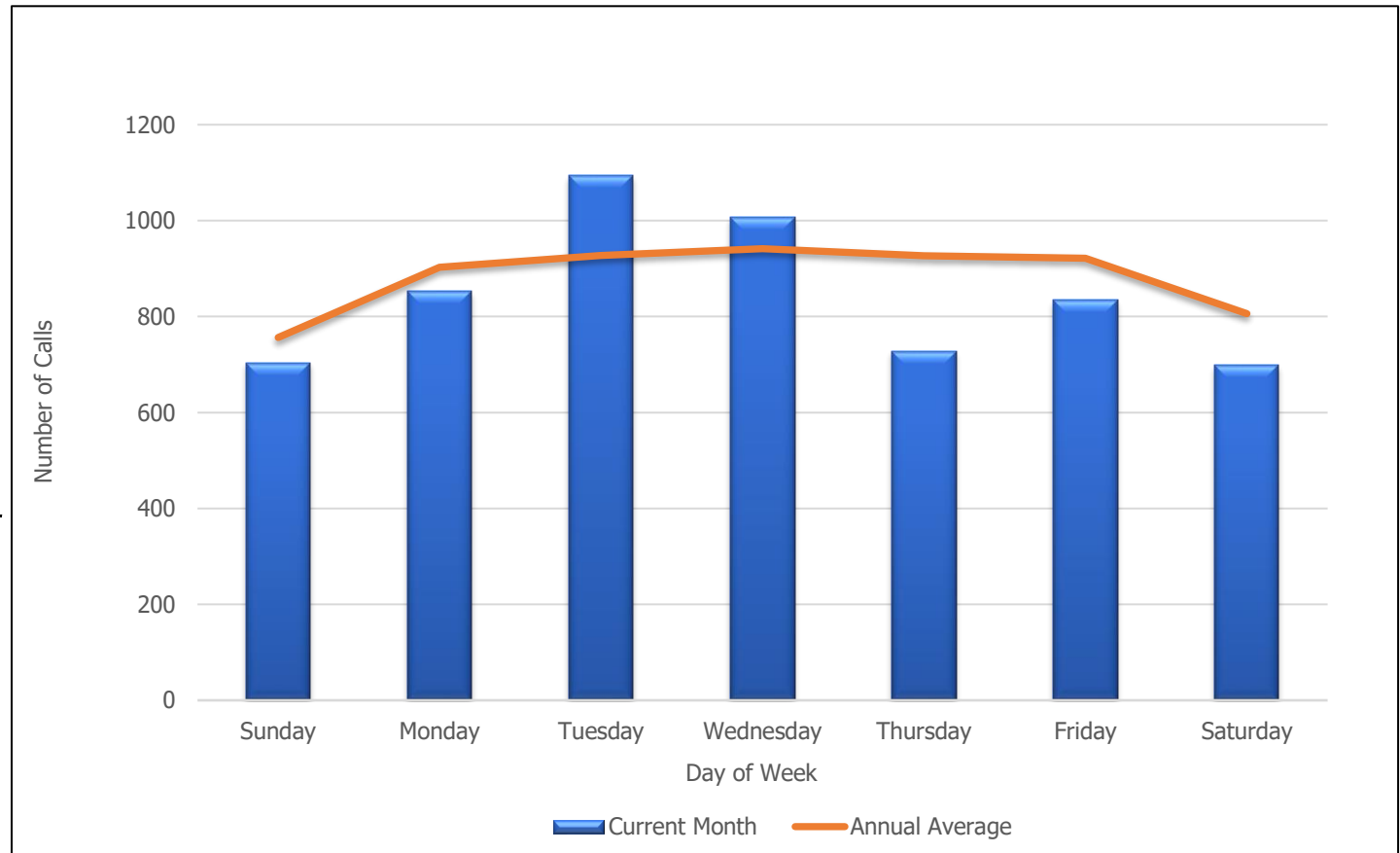
	Jan	Feb	Mar	Apr	May	Jun	Jul	Aug	Sep	Oct	Nov	Dec
■ 2020	8143	7396	7416	6534	8860	7434	7519	8456	8359	8065	7301	7197
■ 2021	6798	6667	8180	8437	7190	6468	6522	6364	6237	6103	5885	6266
■ 2022	5318	5444	6305	6348	7056	6234	6445	6485	6030	6335	5918	0

■ 2020 ■ 2021 ■ 2022

Monthly Calls for Service by Day of Week

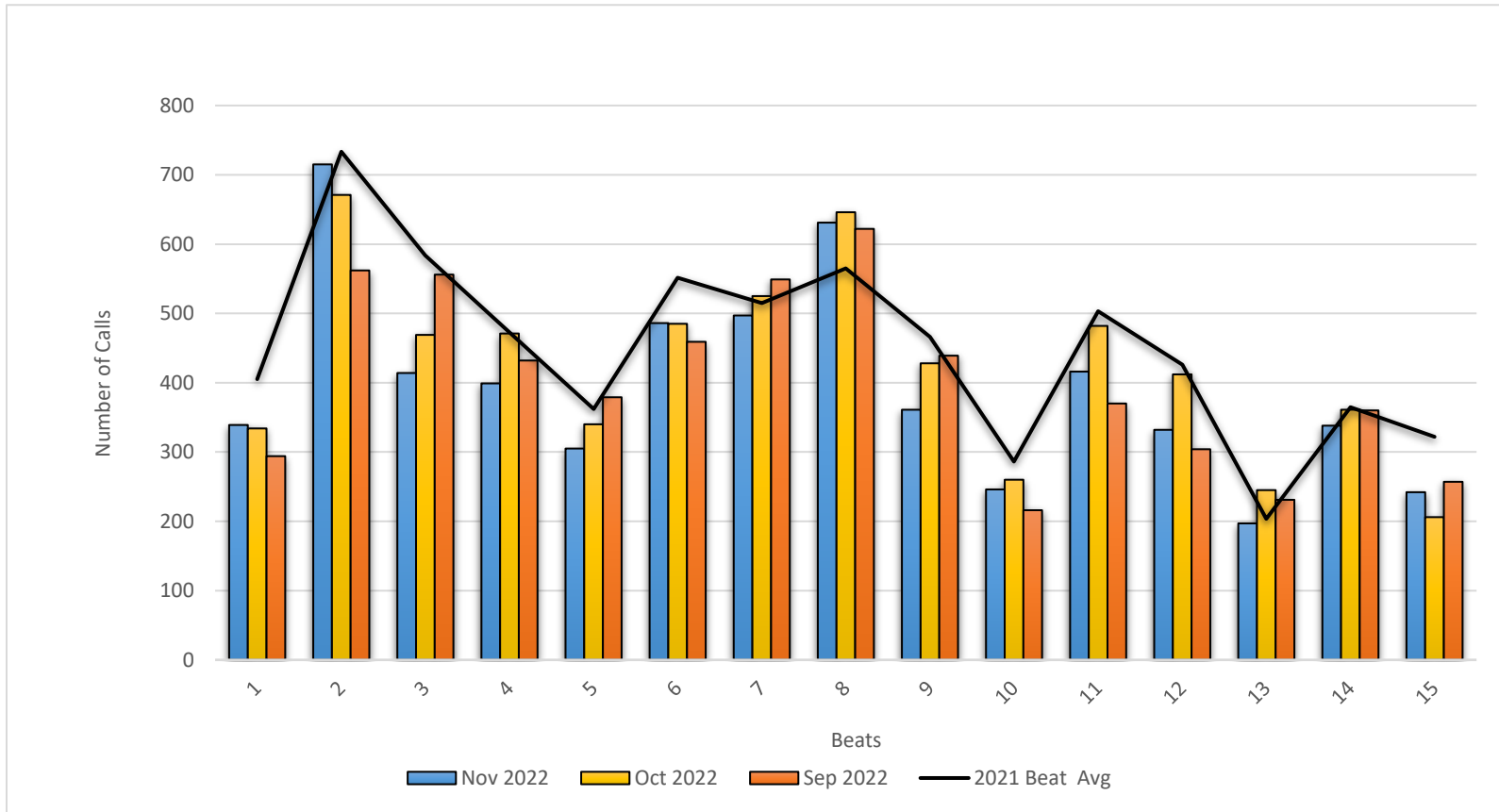
Albany Police Department

Calls For Service	
Day	Nov 2022
Sunday	704
Monday	853
Tuesday	1094
Wednesday	1006
Thursday	728
Friday	834
Saturday	699
	<hr/>
	5918



Calls for Service by Beat

Albany Police Department



Beats	1	2	3	4	5	6	7	8	9	10	11	12	13	14	15
Nov 2022	339	715	414	399	305	486	497	631	361	246	416	332	197	338	242
Oct 2022	334	671	469	471	340	485	525	646	428	260	482	412	245	361	206
Sep 2022	294	562	556	432	379	459	549	622	439	216	370	304	231	360	257
2021 Beat Avg	405	733	584	473	362	552	515	565	466	286	503	426	204	365	322

Albany Police Department Patrol Beats

