



Albany Municipal Gardening Plan

“Engaging the Community in a Successful Partnership to beautify neighborhoods, strengthen community relationships, and grow fresh produce.”



Jonathan Tomko, MUPP
Community Development Planner

"Gardens, scholars say, are the first sign of commitment to a community. When people plant corn they are saying, let's stay here. And by their connection to the land, they are connected to one another."

- Anne Raver



Table of Contents

I.	What is the Purpose of a Community Garden?	4
II.	History of Community Gardens in Albany	5
III.	Development of a Sound Plan	6
IV.	Site Selection	
A.	Targeted Population	7
B.	Targeted Neighborhoods/Wards	8-9
C.	Food Deserts	10
D.	Partnerships with Community Institutions	11
E.	Site Design	12
V.	Other Considerations	13
VI.	Suggested Next Steps	14
VII.	Appendix	
A1.	15 Sites of Great Community Gardening Potential within the City of Albany	16
A2.	Examples of Strong Community Engaged Gardening Plans/Recommendations	22
A3.	Rough Outline of a Viable Community Garden Budget	35

Community Gardens

Purpose:

Community gardens provide fresh produce and plants as well as satisfying labor, neighborhood improvement, sense of community and connection to the environment. They are publicly functioning in terms of ownership, access, and management, as well as typically owned in trust by local governments or non-profit associations.



History of Community Gardens in Albany

- **Phoebe Garden** – sponsored by Phoebe, as part of the “Weed and Seed” Initiative in the late 90’s this garden functioned well although eventually was plagued by theft and maintenance concerns
- **Downtown Garden** – much further back in the memory of Albanians this was a successful garden as well but ended due to factors beyond recollection

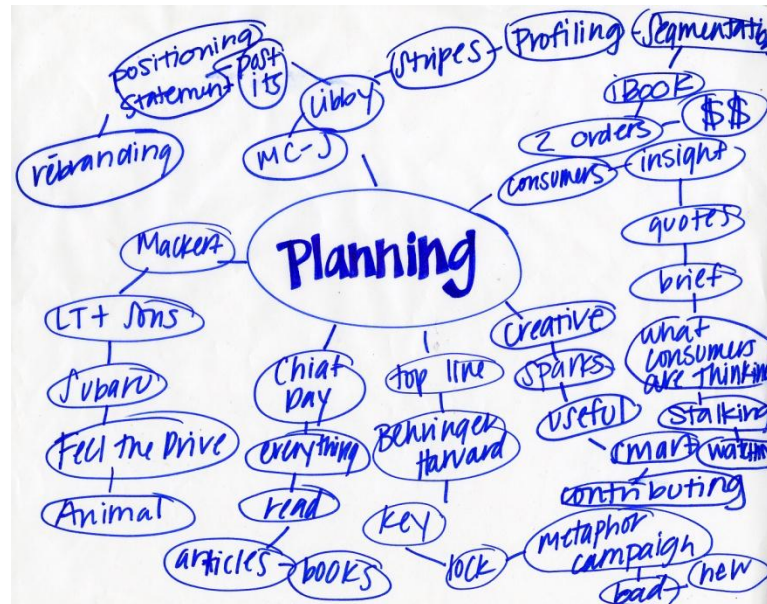


Development of a Sound Plan

When developing a community garden plan or any plan it is very important to engage the stakeholders, local residents, community institutions, organizations and neighborhood groups.

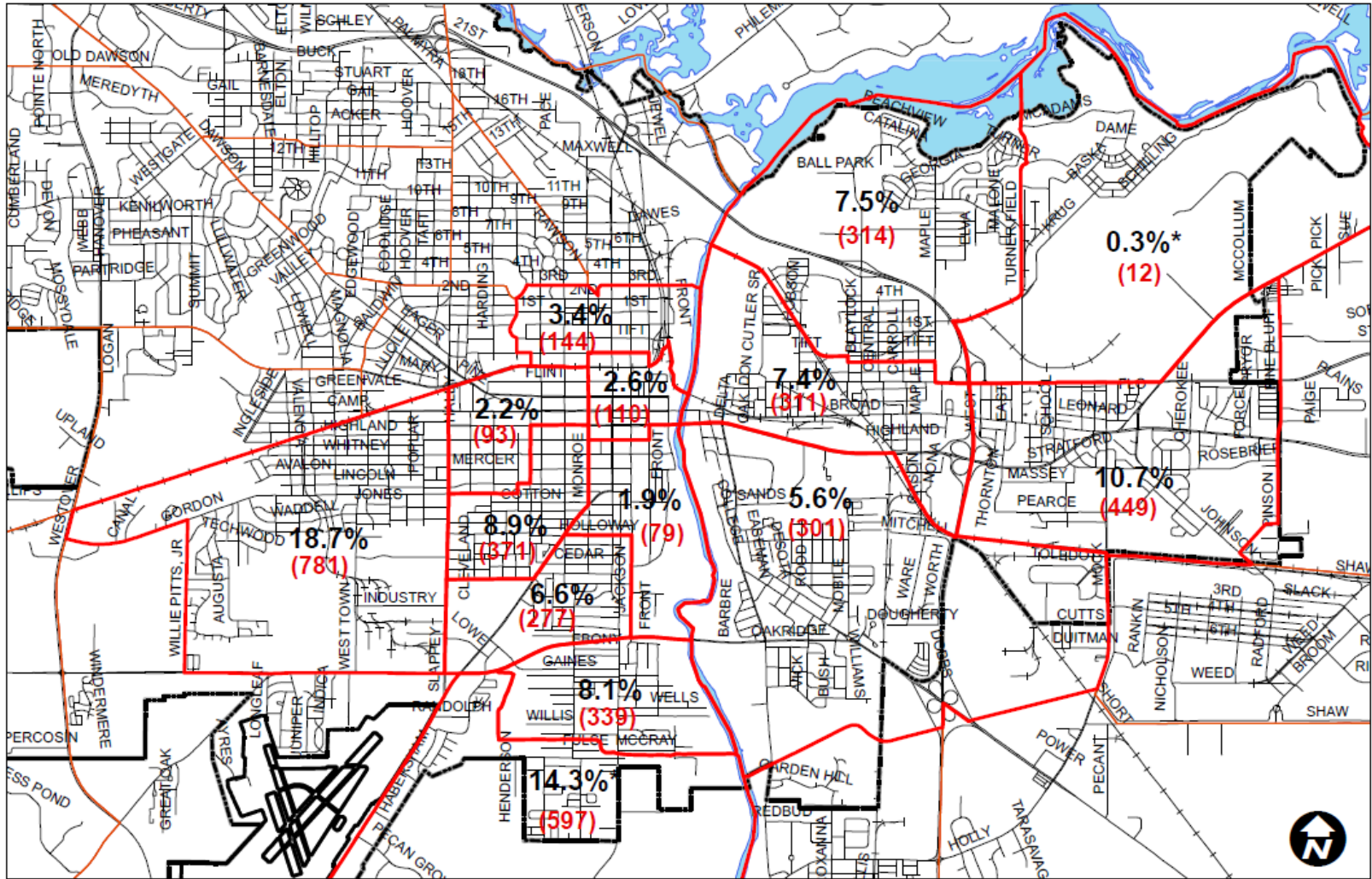
The feedback and perceptions of these stakeholders is important to developing a sound plan, or a successful community garden. It is advised not to select a site and say, "I want a garden here." Unless you have first queried and mobilized the community to take care of the site. From there, Incremental realistic small steps need to be identified and deadlines need to be established.

Good examples of task force reports and plans can be found in the appendix



Site Selection Targeted Population

Demographic data, such as Census Data can be utilized to target high concentrations of those that are elderly, or perhaps youth with limited greenspace.

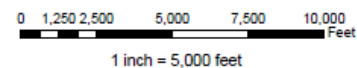


Selected Census Tracts

X.X% % of 65+ Population in Census Tract

(XX) # of People 65+ in Census Tract

% of 65+ Population in Selected Census Tracts



	1	2	8	11	12	13	14.01	14.02	15	103.01*	103.02	106.01	106.02*	107	Total	Avg.
# 65+	449	311	144	781	93	110	79	277	371	12	314	339	597	301	4,178	
% of Selection	10.7%	7.4%	3.4%	18.7%	2.2%	2.6%	1.9%	6.6%	8.9%	0.3%	7.5%	8.1%	14.3%	7.2%		7.1%

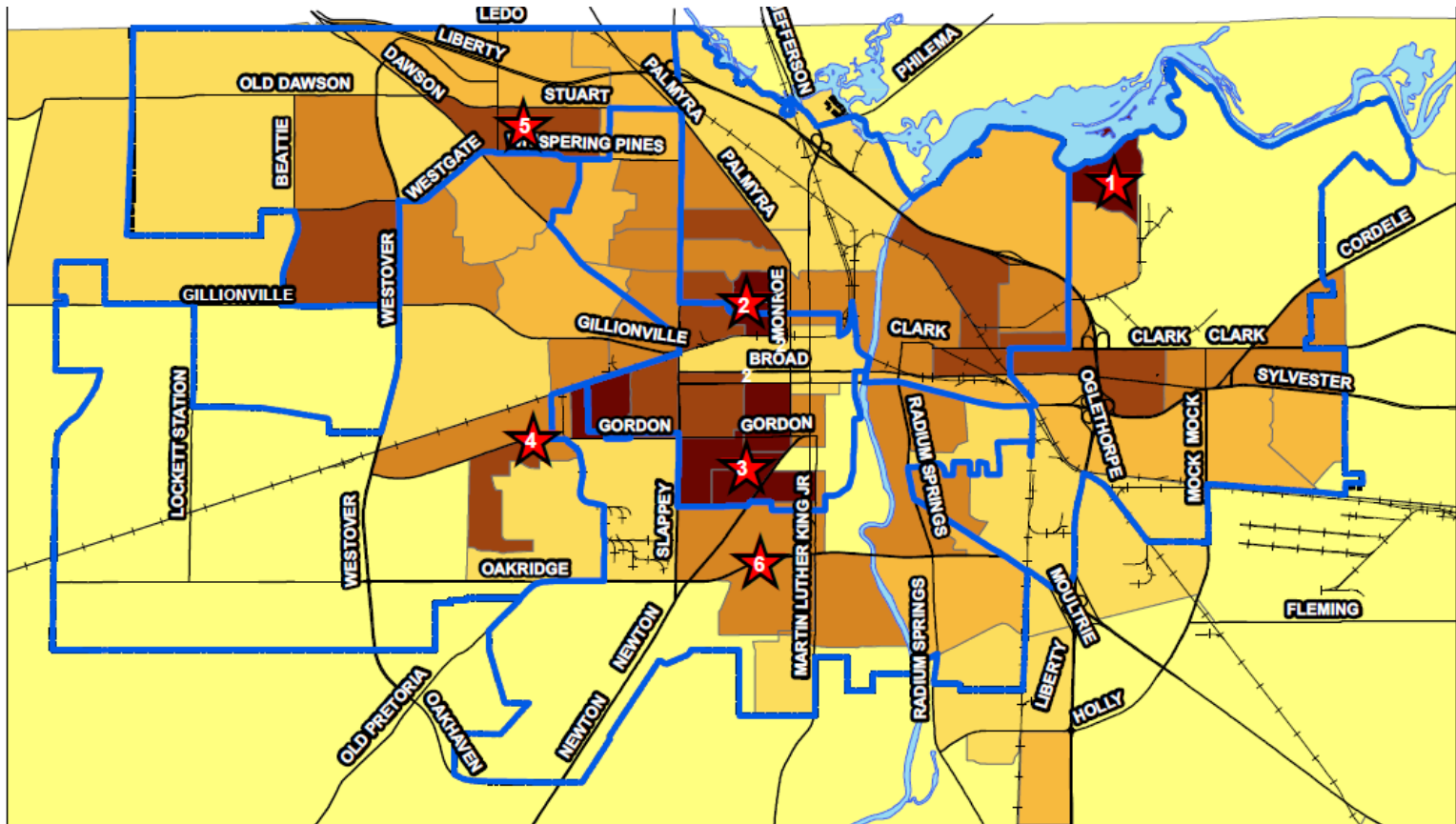
* Census Data Includes Portion of Tract Outside of City Limits

Site Selection

Targeted Neighborhoods/Wards

Specific Neighborhoods could be selected based on:

- Population in Multifamily Housing/Density
- Strong Neighborhood Associations or Community Groups
- Project could be turned into a competition, with each ward being awarded a garden



Department of Community and Economic Development

June 2011
Map by Jonathan Torres
Community Development Planner

Potential Sites by Population Concentration in Each Ward

Ward 1: Highest Density	Owner	Acres	Hydrant	Trees	Potential Partnering Institutions
0 Owens Ave.	City of Albany	6.0	Yes	Few	Mt. Olive, Albany MS, Miller
Ward 1: 2nd Highest Density	Owner	Acres	Hydrant	Trees	Potential Partnering Institutions
1721 E. Oglethorpe Blvd.	City of Albany	2.6	Yes	Few	APD, Thornton CC, Dougherty MS
Ward 2 Highest Density	Owner	Acres	Hydrant	Trees	Potential Partnering Institutions
Engram Park 701 Monroe	City of Albany	1.3	Yes	Few	Parks & Rec., Girls Inc., Lincoln ES
Ward 2 2nd Highest Density	Owner	Acres	Hydrant	Trees	Potential Partnering Institutions
Barkley Blvd. Median	City of Albany	Unknown	Across	Few	East Town NH, Coats & Clark
Ward 3 Highest Density	Owner	Acres	Hydrant	Trees	Potential Partnering Institutions
501 & 601 Van Buren	City of Albany	0.1	Yes	Few	AHA
1413 & 1415 Lee St.	SWGACAC	0.5	Yes	Few	SWGACAC, SS Middle & Monroe HS
Ward 3 2nd Highest Density	Owner	Acres	Hydrant	Trees	Potential Partnering Institutions
Avalon Park	City of Albany	2.0	Yes	Few	Avalon Neighborhood Assoc?
Ward 4 Highest Density	Owner	Acres	Hydrant	Trees	Potential Partnering Institutions
1104 Augusta Dr.	Irene Henderson	0.3	Yes	Few	CCE Nhood, West Town ES?
Ward 4 2nd Highest Density	Owner	Acres	Hydrant	Trees	Potential Partnering Institutions
Ingleside Drive Median	City of Albany	Unknown	Across	Few	Unknown
Ward 5 Highest Density	Owner	Acres	Hydrant	Trees	Potential Partnering Institutions
<i>No Suitable Sites</i>					
Ward 5 2nd Highest Density	Owner	Acres	Hydrant	Trees	Potential Partnering Institutions
Ken Gardens Park	City of Albany	2.3	Yes	Few	Unknown
Ward 6 Highest Density	Owner	Acres	Hydrant	Trees	Potential Partnering Institutions
2614 S. Washington	City of Albany	3.0	Yes	Few	Unknown
2227 Grady St.	City of Albany	1.0	Yes	Few	Unknown
2715 Joshua St.	City of Albany	0.2	Yes	Few	Unknown
201 Talafax Rd.	City of Albany	0.2	Yes	Few	Unknown
Ward 6 2nd Highest Density	Owner	Acres	Hydrant	Trees	Potential Partnering Institutions
Morningside, Kirkland, Vick Tri	City of Albany	0.3	Yes	Few	Unknown, Morningside ES?

List was Compiled by:

1. Searching City owned property proximate to the highest and 2nd highest population concentrations in each ward.

2. Properties were discarded if they served for drainage, had intense tree cover, or no proximate hydrants.

3. Non-City Owned Property was only included if it was a location of high potential.

4. Each of these individual properties is more thoroughly examined with maps and pictures in the appendix

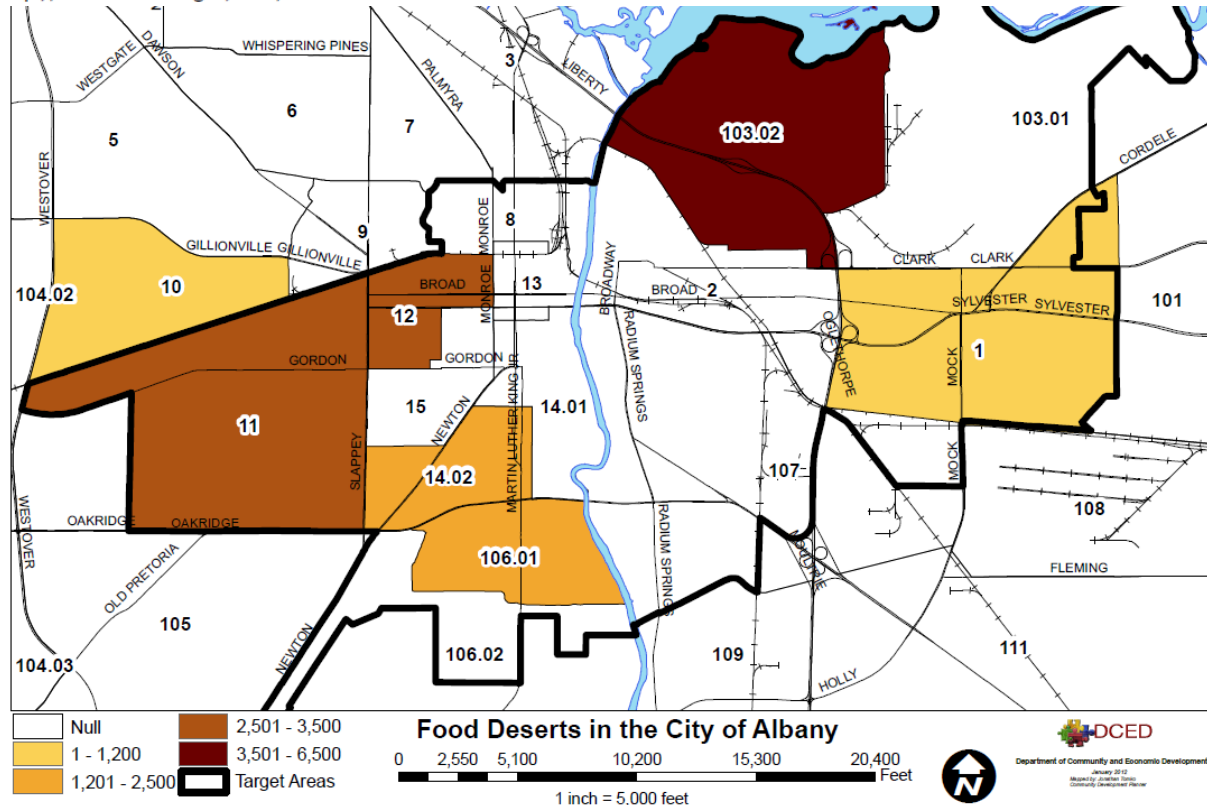
* This list is not intended to be comprehensive, but these sites are VERY strong, whether there are people in the immediate area of these sites who are interested in tending a community garden can not be determined without surveys and other interactive research.

Site Selection

Food Deserts

Census Tract	Total Pop	% of people w/ low access to a large grocery store	# of people w/ low access to a large grocery store	% of total population that is low-income and has low access to a large grocery store	# of total population that is low-income and has low access to a large grocery store	% of housing units w/o a vehicle with low access to a large grocery store	# of housing units w/o a vehicle with low access to a large grocery store	% of children age 0-17 w/ low access to a large grocery store	# of children age 0-17 w/ low access to a large grocery store	% of people age 65+ w/ low access to a large grocery store	# of people age 65+ w/ low access to a large grocery store
1	6,532	8.8	572	4.4	286	0.7	16	3	198	0.8	53
12	3,909	78.7	3075	58.9	2301	28.6	385	29.3	1146	8.2	320
10	1,553	78.5	1219	35	544	4.4	33	15.9	247	15.1	235
11	6,534	53.9	3523	25.1	1641	6.6	158	14.4	942	5.5	362
14.02	2,604	78.7	2050	55.1	1434	23.5	201	24.5	638	11.4	297
103.02	6,518	100	6518	65.8	4288	15.1	268	31	2021	5.3	345
106.01	2,840	87.4	2482	58.9	1673	26.9	260	29.4	836	13.4	380

Source: <http://www.ers.usda.gov/Data/FoodDesert>



Site Selection

Partnerships with Community Institutions

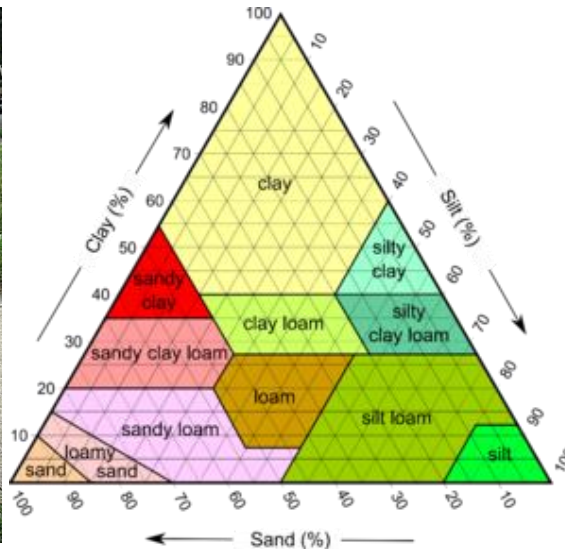
- Existing Community Gardening Organizations
- Faith Based Community Institutions
- Local Businesses
- Parks and Recreation Department
- Public or Private Schools
- After School Programs: YMCA, B&G Club

These organizations may be willing to donate or lease their land



Other Considerations

- Water Sources
- Shade: Existence of too much or too little
- Soil Type or quality
- What to Plant
- Whether to have the garden gated or not
- Where to store tools and supplies
- Types of Plots: Individual or Community,
- Planting Location: Above Ground in Planters or In-Ground



Suggested Next Steps

1. **Conduct Outreach**

- Particularly around potential sites that is found to be feasible, it is very important to gauge interest and ensure the community is on board

2. **Design a Program with Policies, Procedures, Rules and Regulations**

- Please See Tallahassee’s Program Documents in Appendix

3. **Determine to what extent funding will be available**

- Please see Rough Outline of a Viable Budget in Appendix

4. **Accept Applications**

- Collect as much information as possible, determine who is responsible for what

5. **Design/Construction**

- Ensure community has an open dialogue when making these decisions collectively
- Sweat equity may be possible, encourage volunteering early in the process

6. **Maintenance**

- Follow Predetermined Maintenance Plan according to policies and procedures in program

Appendix

A1: 15 Sites of Great Community Gardening Potential within the City of Albany

Ward 1: 0 Owens Avenue



Characteristics	
Limited/No Trees	Y
Hydrant/Water	Y
Block Location	O
Institution	?
6.0 Acres	

Site is located between Owens Avenue and Cora Jinks Lane – Hydrant at NE corner of Estelle Avenue



Ward 1: 1721 East Oglethorpe Boulevard



Characteristics	
Limited/No Trees	Y
Hydrant/Water	Y
Block Location	M
Institution	Y
2.6 Acres	



Site is located behind East Albany Policing Center, adjacent to Thorton Gym/Community Center, Hydrant is located behind 218 Edison Drive, somewhat low visibility APD may need to watch over it.

Ward 2: 701 North Monroe Street (Engram Park)



Characteristics	
Limited/No Trees	Y
Hydrant/Water	Y
Block Location	C
Institution	Y
3.0 Acres	

Site is located within an existing park, there is room close to the hydrant in the SE corner of park for a small garden



Ward 2: Barkley Boulevard Median

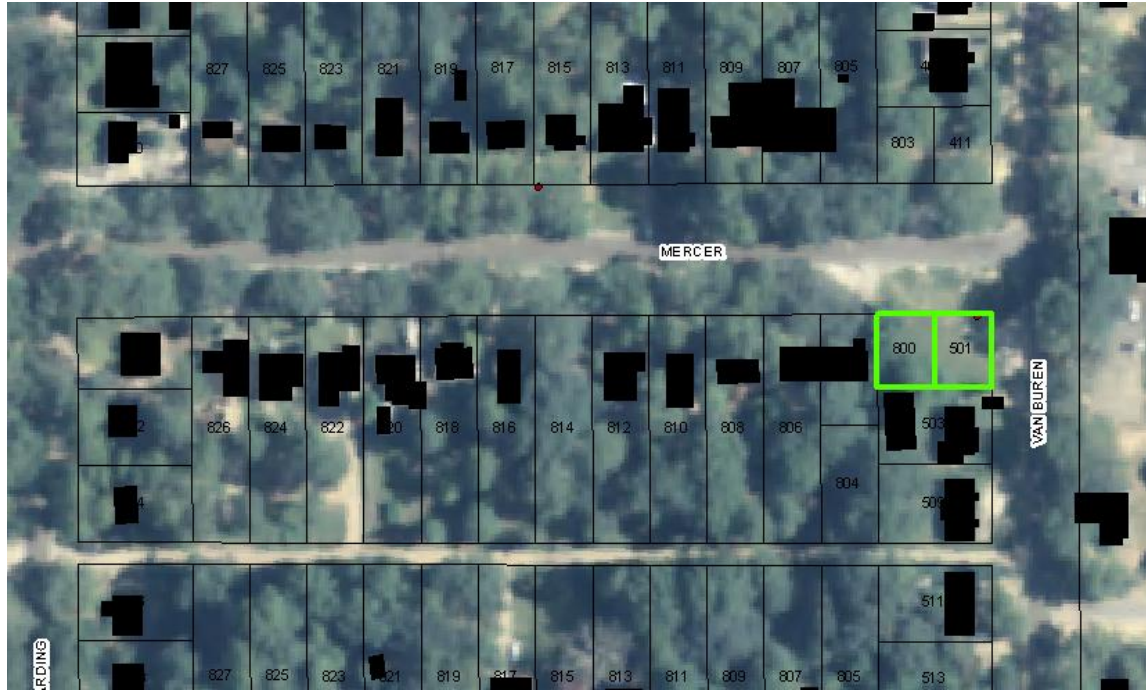


Characteristics	
Limited/No Trees	Y
Hydrant/Water	Across
Block Location	Median
Institution	?
Unknown Acres	



Site is located in median of Barkley Blvd. East Towne Neighborhood Association may get behind this site. Very High Visibility, hydrant at 723 Barkley across street

Ward 3: 501 Van Buren Street



Characteristics	
Limited/No Trees	Y
Hydrant/Water	Y
Block Location	C
Institution	?
0.17Acres	



Site is located on the SW corner of Van Buren and Mercer across from William Binns AHA Housing High Visibility Site, not very attractive, a garden would really be an improvement

Ward 3: 1413 & 1415 Lee Street

Characteristics	
Limited/No Trees	Y
Hydrant/Water	Y
Block Location	C
Institution	N
0.5 Acres	

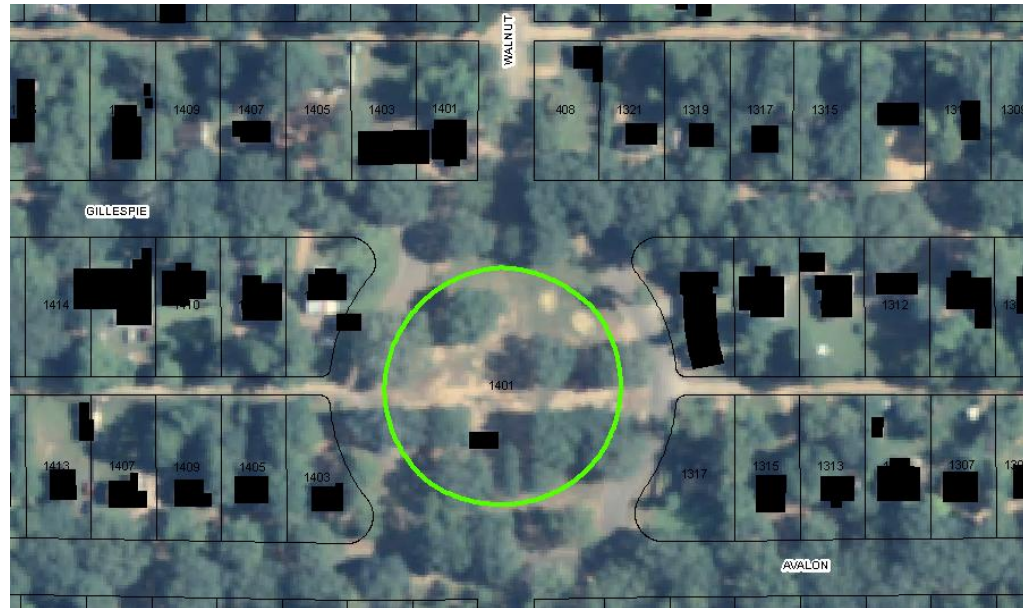


Site is located on two lots at the NW corner of Lippitt and Lee Street SWGACAC owns the sites with a small playground and some parking, they may be willing to collaborate, as there is a hydrant and it is across the street from Southside Middle School and Monroe High School



Ward 3: Avalon Park

Characteristics	
Limited/No Trees	Y
Hydrant/Water	Y
Block Location	U
Institution	?
2.0 Acres	



Site is located within an existing City Park. This park is very unique, and brings character to the neighborhood, it is large enough a garden will not encroach, the site has high visibility and a hydrant within the park.



Ward 4: 1104 Augusta Drive



Characteristics	
Limited/No Trees	Y
Hydrant/Water	Y
Block Location	C
Institution	N
0.94 Acres	



Site is located on Augusta Drive just south of West Town Elementary School , property is adjacent to playground and private landowner may partner – Country Club Estates has a well organized Neighborhood Association that may get behind this site.

Ward 4: Ingleside Drive Median



Characteristics	
Limited/No Trees	Y
Hydrant/Water	Y
Block Location	C
Institution	N
Unknown Acres	

Site is located in the median of Ingleside Drive, Very High Visibility, several hydrants located across street, this site offers nearly ¼ mile of planting area

Ward 5: Ken Gardens Park



Characteristics	
Limited/No Trees	Y
Hydrant/Water	Y
Block Location	M
Institution	?
1.2 Acres	

Site is located within an existing park, adjacent to a playground in Ken Gardens Park, Very High Visibility, hydrant adjacent, may encroach upon playground too much



Ward 6: 2614 S. Washington



Characteristics	
Limited/No Trees	Y
Hydrant/Water	Y
Block Location	C
Institution	N
3.66 Acres	

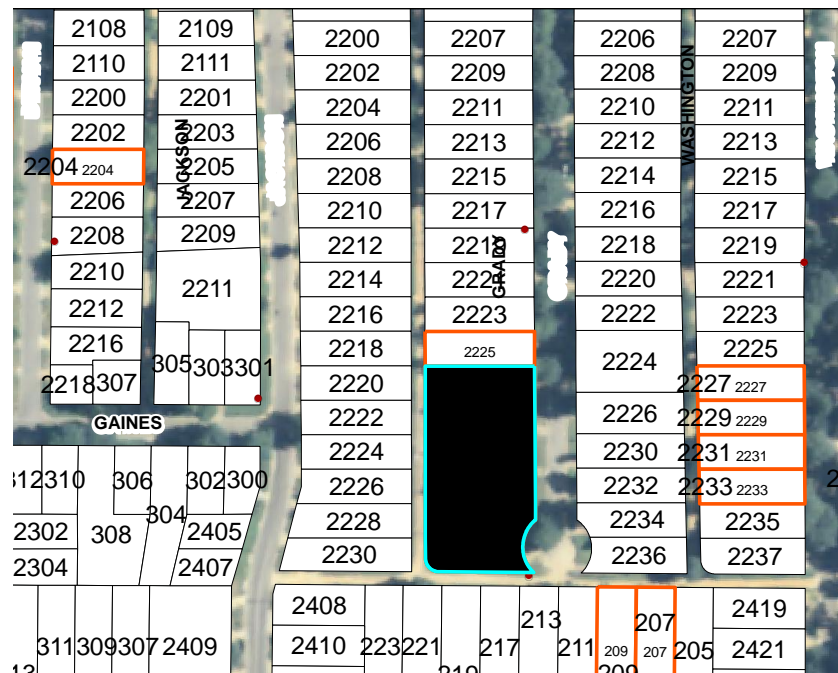
Site is located on recombined FEMA lots owned by city that are unbuildable, site is very isolated, however it could be gated easier than most sites to become a large mega-garden



Ward 6: 2227 Grady St.

Characteristics	
Limited/No Trees	Y
Hydrant/Water	Y
Block Location	C
Institution	N
1.07 Acres	

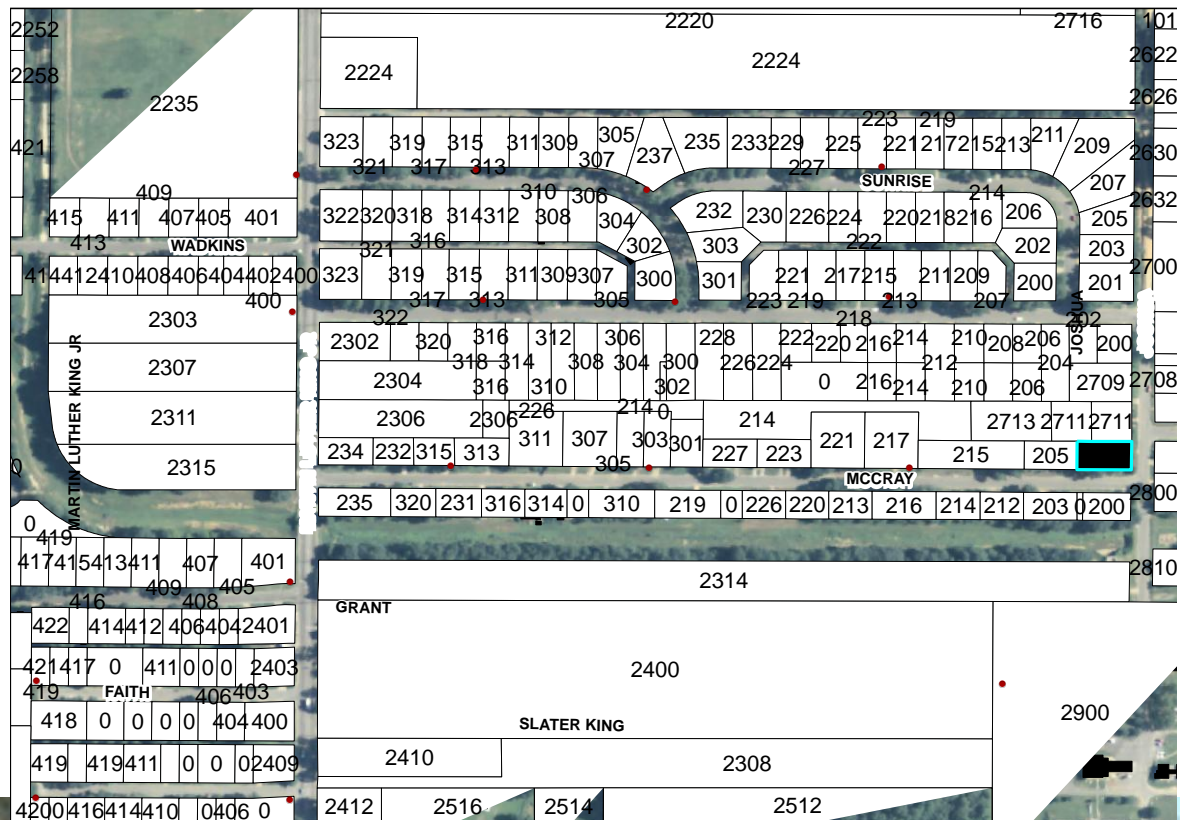
Site is located on recombined city owned FEMA lots that are unbuildable.



Ward 6: 2715 Joshua St.

Characteristics	
Limited/No Trees	Y
Hydrant/Water	Y
Block Location	C
Institution	N
0.23 Acres	

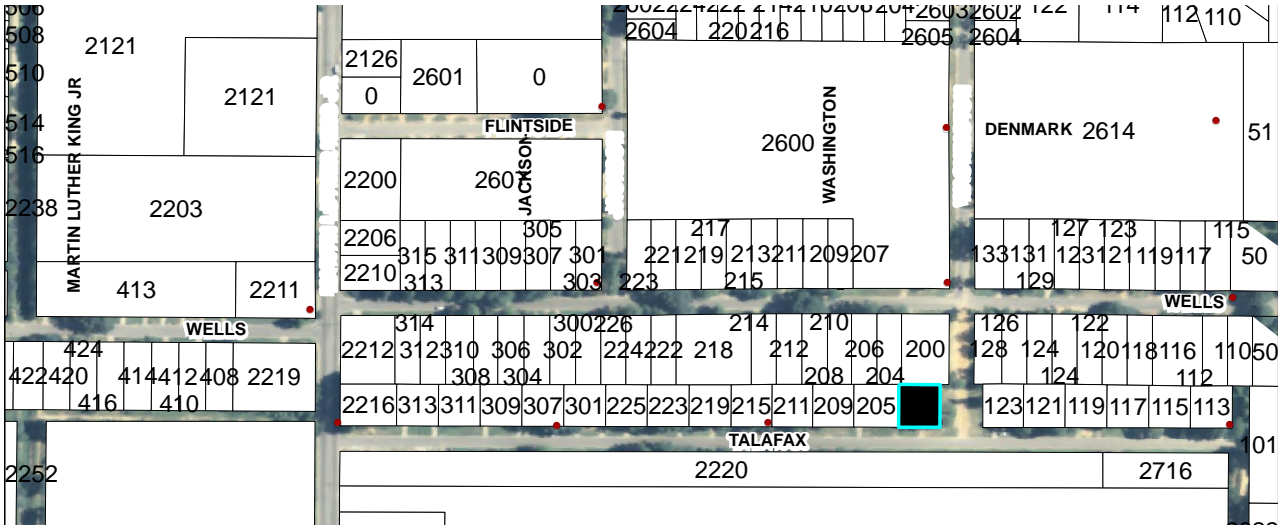
Site is located on the corner of Joshua and McCray Somewhat Low Visibility, hydrant on corner



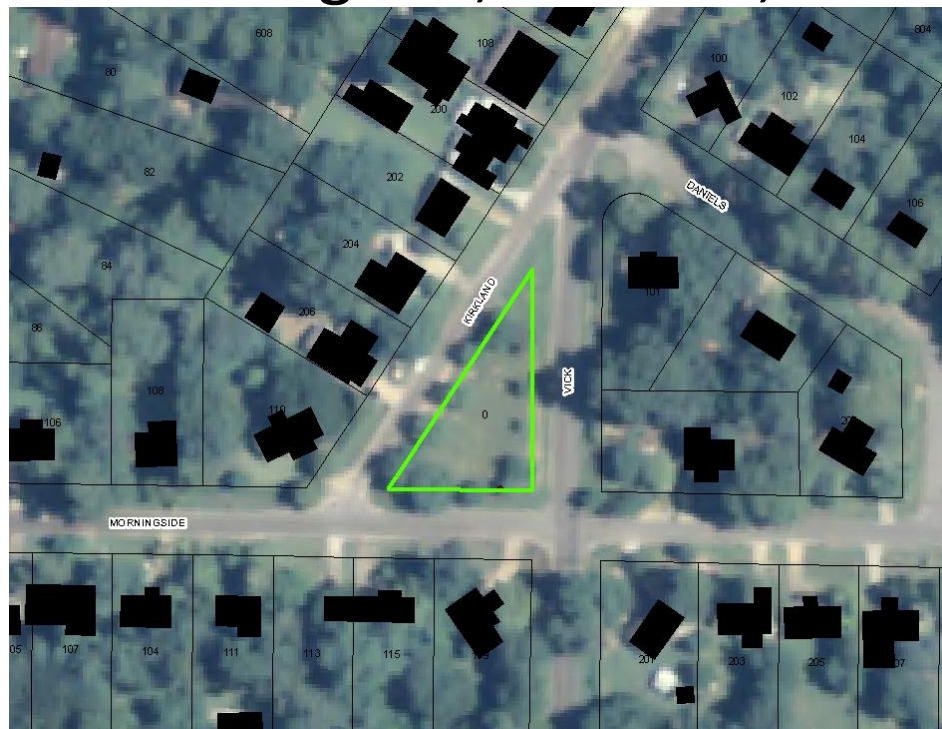
Ward 6: 201 Talafax Rd.

Characteristics	
Limited/No Trees	Y
Hydrant/Water	Y
Block Location	C
Institution	Y
0.23 Acres	

Site is located on the corner of Washington and Talafax, this is a very nice site, however it is clear the church uses it for parking and may not desire this use.



Ward 6: Morningside, Kirkland, Vick Triangle



Characteristics	
Limited/No Trees	Y
Hydrant/Water	Y
Block Location	O
Institution	N
0.3 Acres	

Very unique and very underutilized site, at the triangle of where Morningside, Kirkland and Vick intersect - Very High Visibility, hydrant on Triangle, if not a garden this would make a great pocket park, lots of children in the vicinity.



A2: Examples of Strong Community Engaged Gardening Plans/Recommendations

A3: Rough Outline of a Viable Community Garden Budget