

ALBANY POLICE DEPARTMENT CRIME ANALYSIS

“Combating Crime and Protecting Lives”

Prepared By the Crime Analysis Unit of The Albany Police Department

****These numbers may be updated from month to month as records updates occur****

2013

Month of February

Distribution: CITY MANAGER, ASST. CITY MANAGERS

CHIEF OF POLICE
DEPUTY CHIEF - INVESTIGATIVE
DEPUTY CHIEF – UNIFORM
DEPUTY CHIEF – SUPPORT SERVICES
MAJOR - INTERNAL AFFAIRS
INVESTIGATIONS CAPTAINS
UNIFORM CAPTAINS
ACCREDITATION MANAGER

SPECIAL OPERATIONS CAPT.
FAMILY PROTECTION
RECORDS SUPERVISOR
PLANNING & RESEARCH
TRAINING SUPERVISOR
CHIEF'S ADMIN ASSISTANT
SUPPORT SERVICES LT

***Information Included in this Report Reflects
Compliance with UCR Reporting Standards**

The information contained in this report is primarily raw data until calendar year reporting.

Please contact David Sparks, APD Crime Analyst for questions regarding this report @ 431-2878.

Monthly Part I Crimes

Albany Police Department

Part I Crimes Committed During the Month of February 2013 with Comparisons of February 2012 & 2011

Actual Offenses	2013 2012 Month to Month		+/- Change		2013 2011 Month to Month		+/- Change	
Offenses Committed	February 2013	February 2012	#	%	February 2013	February 2011	#	%
Homicide	0	1	-1	-100.00	0	2	-2	-100.00
Rape	1	1	0	0.00	1	3	-2	-66.67
Robbery	11	14	-3	-21.43	11	10	1	10.00
Aggravated Assault	26	32	-6	-18.75	26	27	-1	-3.70
Violent Crime Total	38	48	-10	-20.83	38	42	-4	-9.52
Arson	1	0	1	*NC	1	0	1	*NC
Burglary	69	71	-2	-2.82	69	65	4	6.15
Larceny	209	200	9	4.50	209	184	25	13.59
Auto Theft	15	14	1	7.14	15	15	0	0.00
Property Crime Total	294	285	9	3.16	294	264	30	11.36
Crime Trend Total	332	333	-1	-0.30	332	306	26	8.50

Part I Case Clearances During the Month of February 2013 with Comparisons of February 2012 & 2011

	2013	2012	2011	2013	2012	2011
Offenses Cleared	February # Cleared	February # Cleared	February # Cleared	February % Cleared	February % Cleared	February % Cleared
Homicide	0	1	2	*NC	100.00%	100.00%
Rape	0	1	3	0.00%	100.00%	100.00%
Robbery	2	3	3	18.18%	21.43%	30.00%
Aggravated Assault	9	16	9	34.62%	50.00%	33.33%
Violent Crime Cleared	11	21	17	28.95%	43.75%	40.48%
Arson	0	0	0	0.00%	*NC	*NC
Burglary	12	3	12	17.39%	4.23%	18.46%
Larceny	52	33	43	24.88%	16.50%	23.37%
Auto Theft	3	3	2	20.00%	21.43%	13.33%
Property Crime Cleared	67	39	57	22.79%	13.68%	21.59%
Clearance Total	78	60	74	23.49%	18.02%	24.18%

* The Crime Trend and Clearance Totals do not include percentages for numbers not divisible by 0.

Year to Date Part I Crimes

Albany Police Department

Part I Crimes Committed Year-to-date as of February 2013 with Comparisons of February 2012 & 2011								
Actual Offenses	2013 Year to Date		2012 Year to Date		+/- Change			
	February 2013	February 2012	#		%			
Offenses Committed								
Homicide	0	1	-1		-100.00			
Rape	2	5	-3		-60.00			
Robbery	27	31	-4		-12.90			
Aggravated Assault	68	72	-4		-5.56			
Violent Crime Total	97	109	-12		-11.01			
Arson	3	3	0		0.00			
Burglary	172	194	-22		-11.34			
Larceny	523	469	54		11.51			
Auto Theft	27	38	-11		-28.95			
Property Crime Total	725	704	21		2.98			
Crime Trend Total	822	813	9		1.11			

Part I Case Clearances Year-to-date as of February 2013 with Comparisons of February 2012 & 2011								
	2013	2012	2011					
Offenses Cleared	February # Cleared	February # Cleared	February # Cleared	2013	2012	2011		
Homicide	0	1	3	February % Cleared	February % Cleared	February % Cleared		
Rape	2	3	6	*NC	100.00%	100.00%		
Robbery	9	7	3	100.00%	60.00%	120.00%		
Aggravated Assault	29	38	23	33.33%	22.58%	15.00%		
				42.65%	52.78%	44.23%		
Violent Crime Cleared	40	49	35	41.24%	44.95%	43.75%		
Arson	1	0	0	33.33%	0.00%	0.00%		
Burglary	20	15	30	11.63%	7.73%	16.95%		
Larceny	104	86	93	19.89%	18.34%	22.57%		
Auto Theft	5	4	5	18.52%	10.53%	17.24%		
Property Crime Cleared	130	105	128	17.93%	14.91%	20.68%		
Clearance Total	170	154	163	20.68%	18.94%	23.32%		

* The Crime Trend and Clearance Totals do not include percentages for numbers not divisible by 0.

Monthly Part II and Other Crimes

Albany Police Department

Part II Crime Comparison of February 2013 Data with Previous Year/Month									
Part II Crimes	February 2013	February 2012	+/- #	Change %		February 2013	January 2012	+/- #	Change %
Disorderly Conduct	74	74	0	0.00		74	46	28	60.87
Domestic Violence	141	152	-11	-7.24		141	154	-13	-8.44
Disorderly w/intoxicated	0	0	0	*NC		0	0	0	*NC
D.U.I.	17	13	4	30.77		17	7	10	142.86
Child Molestation	1	4	-3	-75.00		1	2	-1	-50.00
Cruelty to Child	0	5	-5	-100.00		0	3	-3	-100.00
Child Protec: Curfew	0	0	0	*NC		0	0	0	*NC
Child Protec:Truancy	0	2	-2	-100.00		0	0	0	*NC
Interfere w/Custody	1	0	1	*NC		1	0	1	*NC
Child Abandonment	0	0	0	*NC		0	0	0	*NC
Enticing a Child	0	1	-1	-100.00		0	0	0	*NC
Forgery	6	11	-5	-45.45		6	10	-4	-40.00
Noise Ordinance Viol.	0	0	0	*NC		0	0	0	*NC
Harassing Phone Calls	3	14	-11	-78.57		3	6	-3	-50.00
Loitering	6	0	6	*NC		6	2	4	200.00
Missing Persons	23	40	-17	-42.50		23	22	1	4.55
Runaway	0	1	-1	-100.00		0	1	-1	-100.00
Suicide	1	0	1	*NC		1	0	1	*NC
Underage Poss./Consum.	3	1	2	200.00		3	4	-1	-25.00
Criminal Damage	12	14	-2	-14.29		12	21	-9	-42.86
Theft: Gas Drive Off	2	3	-1	-33.33		2	1	1	100.00
Simple Assault	5	4	1	25.00		5	9	-4	-44.44
Simple Battery	67	72	-5	-6.94		67	87	-20	-22.99
Battery	25	24	1	4.17		25	33	-8	-24.24
Obstruct/Hinder Police	7	18	-11	-61.11		7	18	-11	-61.11
Sexual Battery	1	1	0	0.00		1	0	1	*NC
Open Container	5	18	-13	-72.22		5	9	-4	-44.44
Sodomy	0	0	0	*NC		0	1	-1	-100.00
Statutory Rape	0	0	0	*NC		0	1	-1	-100.00
Saggy Pants	21	31	-10	-32.26		21	7	14	200.00
All Cases Not Listed	499	499	0	0.00		499	488	11	2.25
Total Part II Crime	920	1002	-82	-8.18		920	932	-12	-1.29

** The Crime Trend and Clearance Totals do not include percentages for numbers not able to be divided by 0.

Year to Date Part II and Other Crimes

Albany Police Department

Part II Crime Comparison of 2013 Year to Date with Previous Years 2012 & 2011									
Part II Crimes	February 2013	February 2012	+/- #	Change %		February 2013	February 2011	+/- #	Change %
Disorderly Conduct	120	135	-15	-11.11		120	123	-3	-2.44
Domestic Violence	295	310	-15	-4.84		295	385	-90	-23.38
Disorderly wh/intoxicated	0	0	0	*NC		0	0	0	*NC
D.U.I.	24	23	1	4.35		24	41	-17	-41.46
Child Molestation	3	11	-8	-72.73		3	4	-1	-25.00
Child Cruelty	3	13	-10	-76.92		3	4	-1	-25.00
Curfew	0	0	0	*NC		0	2	-2	-100.00
Truancy	0	3	-3	-100.00		0	1	-1	-100.00
Interfere w/Custody	1	1	0	0.00		1	1	0	0.00
Child Abandonment	0	0	0	*NC		0	0	0	*NC
Enticing a Child	0	1	-1	-100.00		0	0	0	*NC
Forgery	16	26	-10	-38.46		16	23	-7	-30.43
Noise Ordinance Viol.	0	1	-1	-100.00		0	0	0	*NC
Harassing Phone Calls	9	28	-19	-67.86		9	19	-10	-52.63
Loitering	8	3	5	166.67		8	1	7	700.00
Missing Persons	45	73	-28	-38.36		45	58	-13	-22.41
Runaway	1	1	0	0.00		1	2	-1	-50.00
Suicide	1	1	0	0.00		1	2	-1	-50.00
Underage Poss./Consum.	7	2	5	250.00		7	6	1	16.67
Criminal Damage	33	35	-2	-5.71		33	51	-18	-35.29
Theft: Gas Drive Off	3	6	-3	-50.00		3	2	1	50.00
Simple Assault	14	7	7	100.00		14	31	-17	-54.84
Simple Battery	154	147	7	4.76		154	161	-7	-4.35
Battery	58	55	3	5.45		58	56	2	3.57
Obstruction of Officer	25	34	-9	-26.47		25	20	5	25.00
Sexual Battery	1	2	-1	-50.00		1	6	-5	-83.33
Open Container	14	25	-11	-44.00		14	26	-12	-46.15
Sodomy	1	2	-1	-50.00		1	0	1	*NC
Statutory Rape	1	0	1	*NC		1	1	0	0.00
Saggy Pants	28	69	-41	-59.42		28	4	24	600.00
All Other Cases	987	1011	-24	-2.37		987	1081	-94	-8.70
Total Part II Crime	1852	2025	-173	-8.54		1852	2111	-259	-12.27

** The Crime Trend and Clearance Totals do not include percentages for numbers not able to be divided by 0.

Monthly Part I Crimes by District

Albany Police Department

February 2013

West Actual Offenses			
Offenses Committed	February 2013	January 2012	Year to Date 2013
Homicide	0	0	0
Rape	0	0	0
Robbery	3	3	6
Aggravated Assault	6	6	13
Violent Crime Total	9	9	19
Arson	0	0	0
Burglary	11	29	40
Larceny	84	124	208
Auto Theft	8	5	13
Property Crime Tot.	103	158	261
Crime Trend Total	112	167	280

Central Actual Offenses			
Offenses Committed	February 2013	January 2012	Year to Date 2013
Homicide	0	0	0
Rape	0	0	0
Robbery	6	9	15
Aggravated Assault	14	24	38
Violent Crime Total	20	33	53
Arson	1	2	3
Burglary	22	21	43
Larceny	67	103	170
Auto Theft	4	3	7
Property Crime Tot.	94	129	223
Crime Trend Total	114	162	276

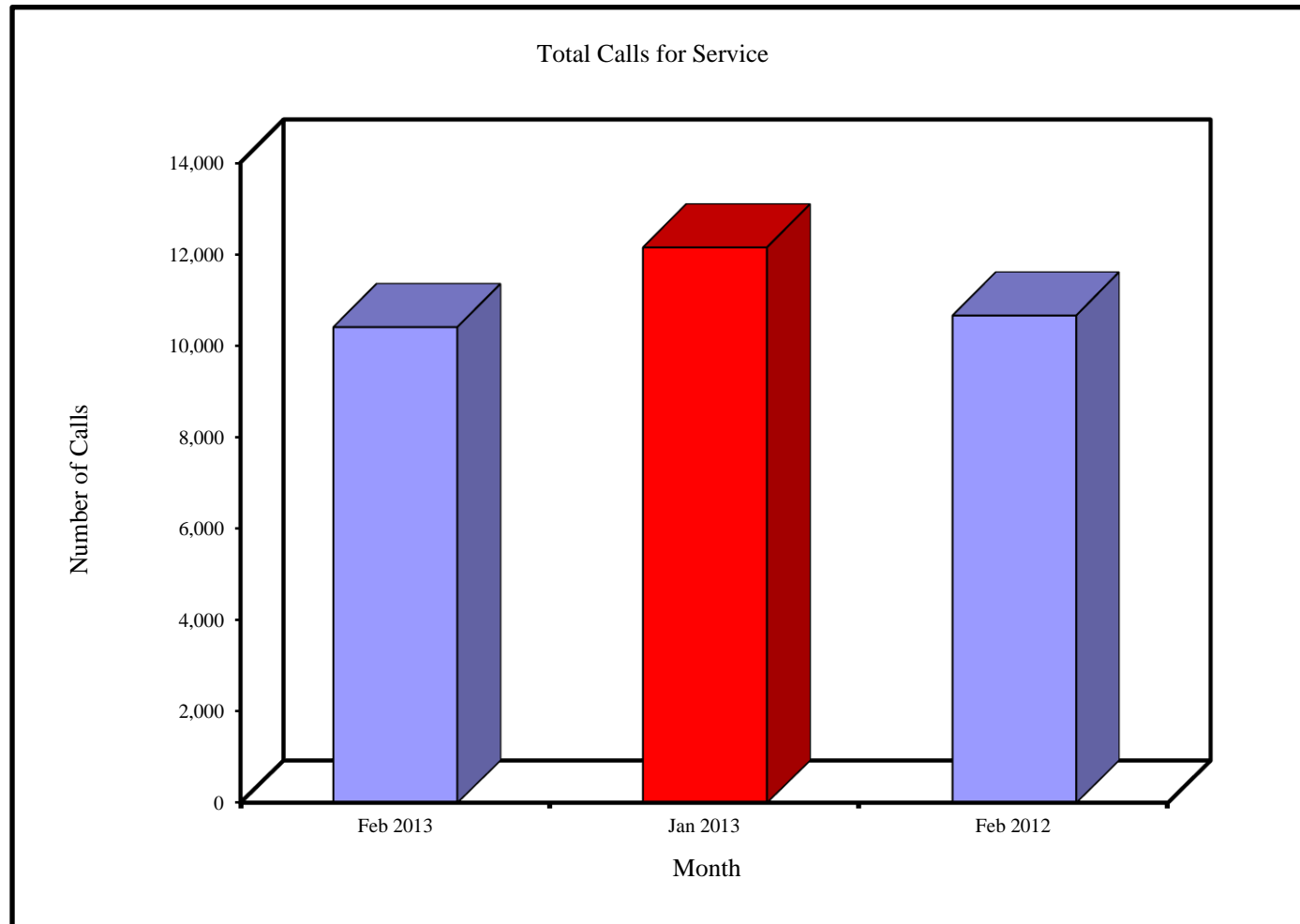
East Actual Offenses			
Offenses Committed	February 2013	January 2012	Year to Date 2013
Homicide	0	0	0
Rape	1	1	2
Robbery	2	4	6
Aggravated Assault	5	12	17
Violent Crime Total	8	17	25
Arson	0	0	0
Burglary	36	53	89
Larceny	58	87	145
Auto Theft	3	4	7
Property Crime Tot.	97	144	241
Crime Trend Total	105	161	266

Monthly Total Calls for Service

Albany Police Department

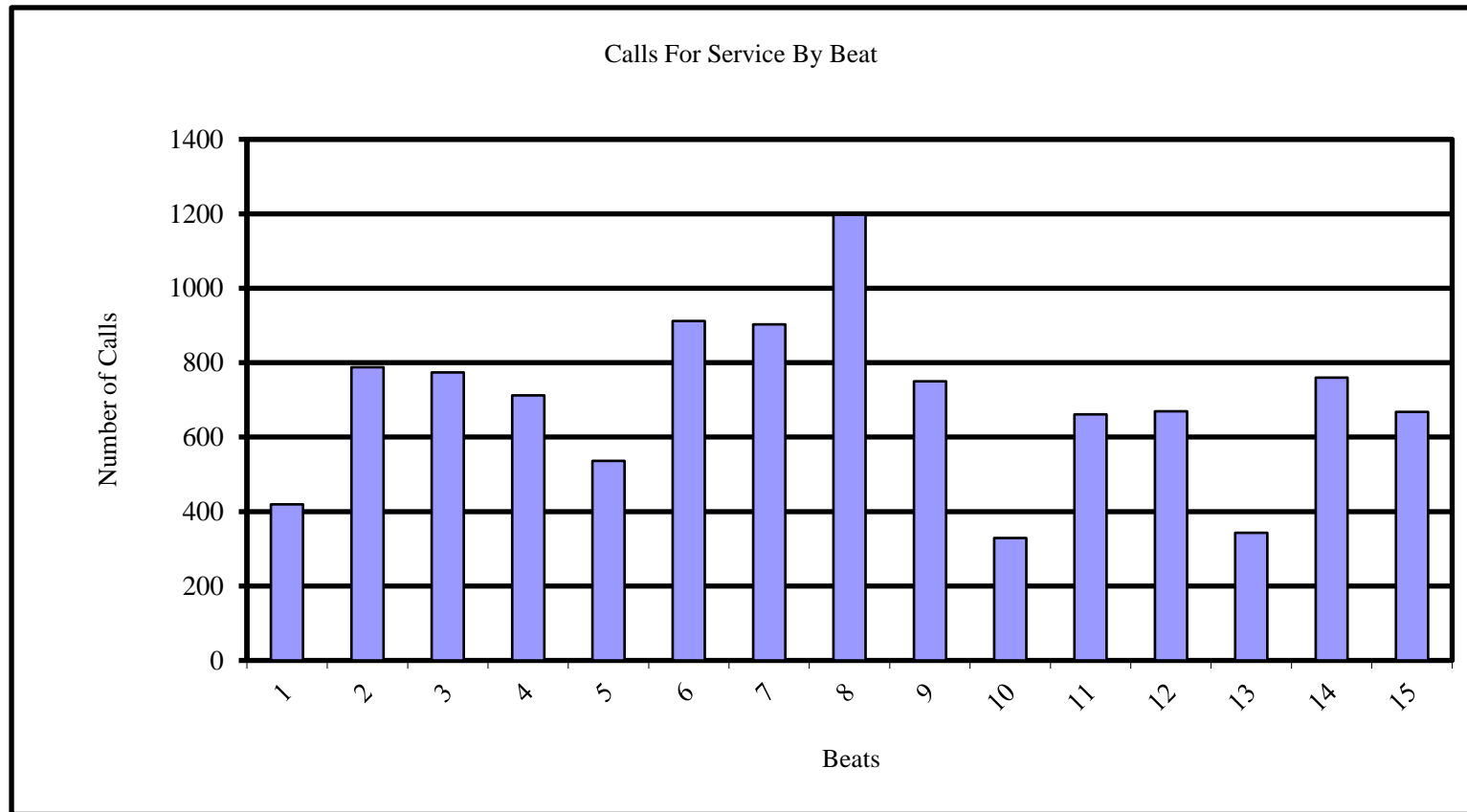
Total Calls For Service

Feb 2013	Jan 2013	Feb 2012
10,421	12,155	10,674



Monthly Calls for Service by Beats

Albany Police Department

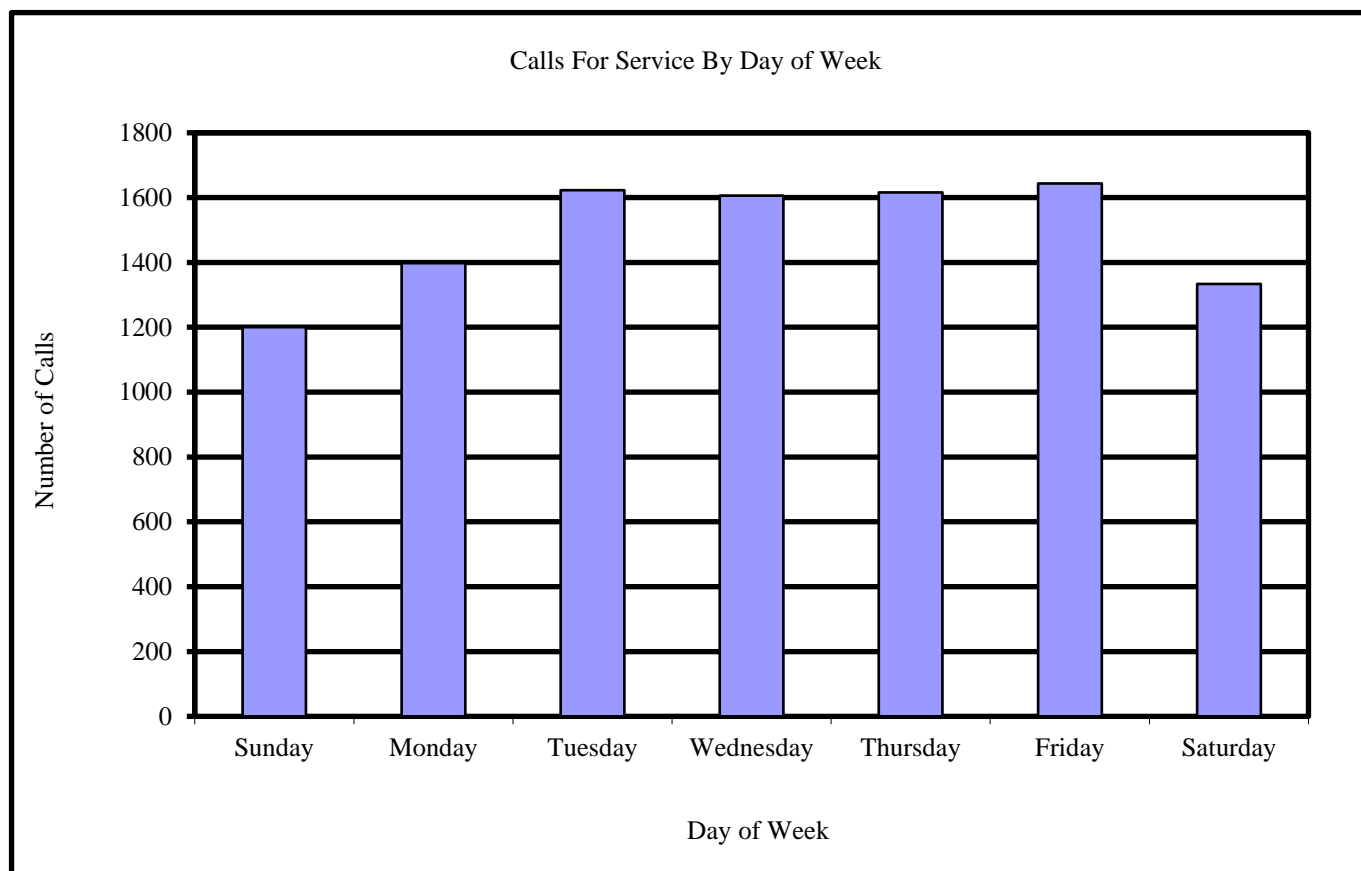


Beats	1	2	3	4	5	6	7	8	9	10	11	12	13	14	15
Calls in February 2013	419	788	774	712	536	912	903	1197	750	329	661	669	343	760	668

Monthly Calls for Service by Day of Week

Albany Police Department

<u>Calls For Service</u>	
Day	February 2012
Sunday	1200
Monday	1398
Tuesday	1623
Wednesday	1606
Thursday	1616
Friday	1644
Saturday	1334
<hr/>	
10421	

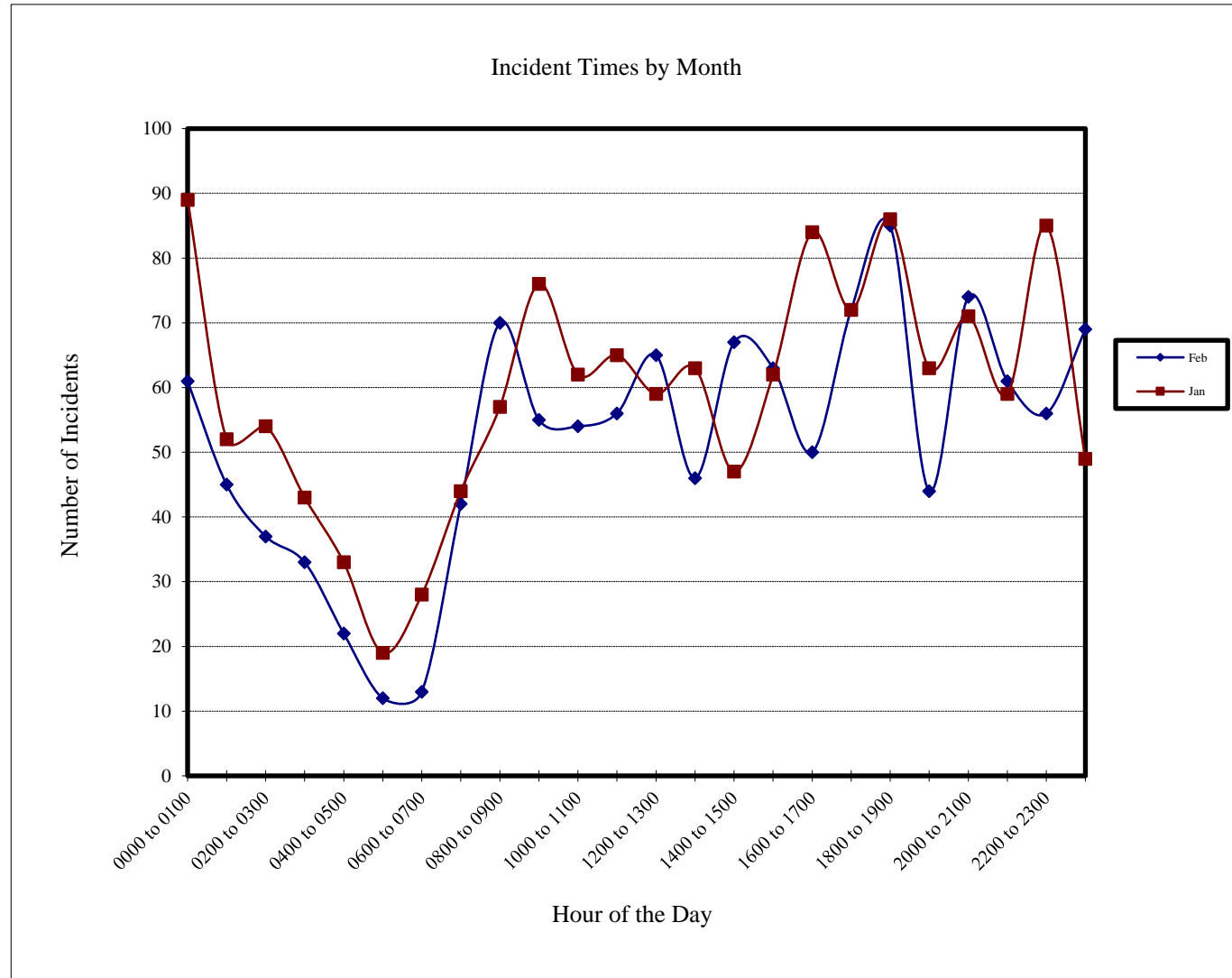


Incidents by Hour

Albany Police Department

Incident Times by Month

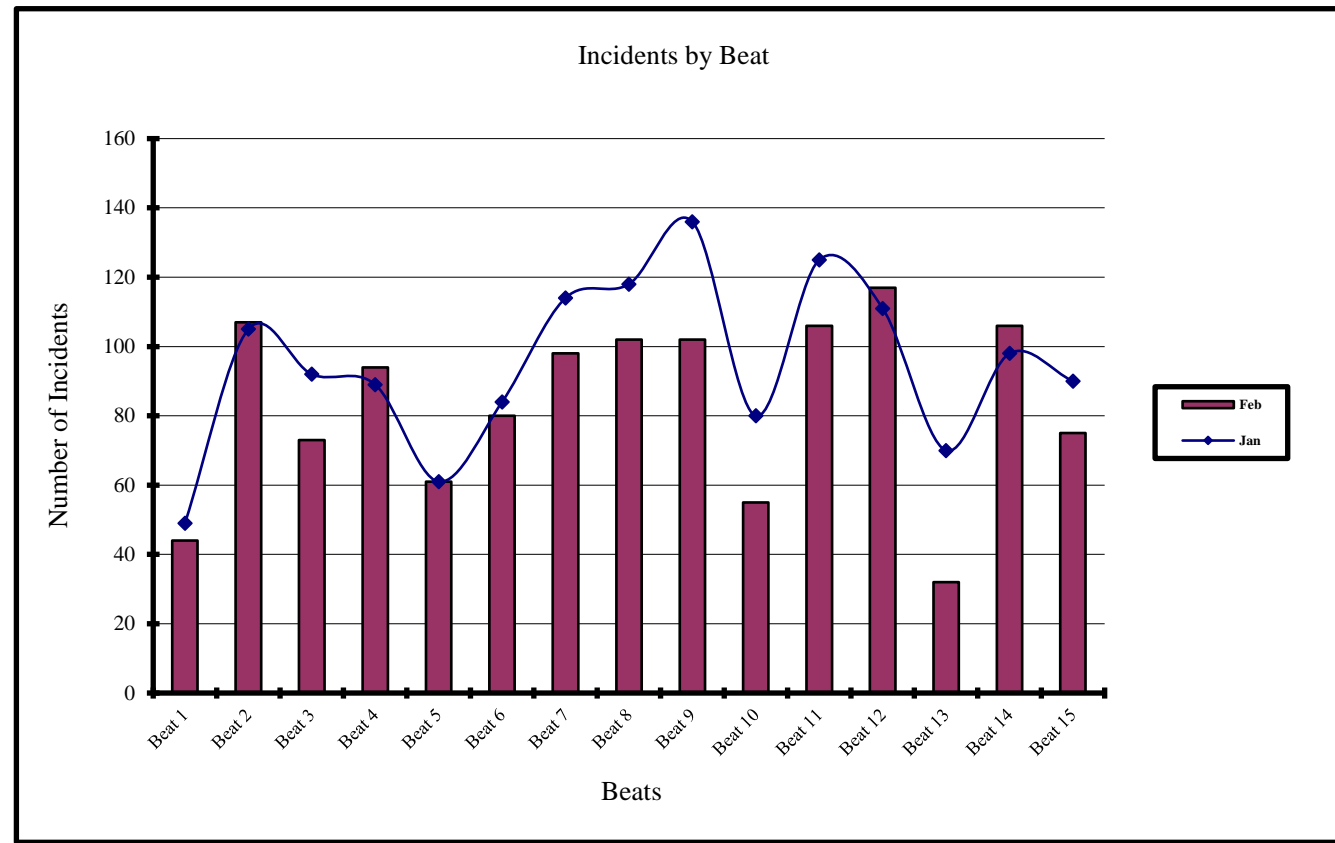
Hour of Day	Feb 2013	Jan 2013
0000 to 0100	61	89
0100 to 0200	45	52
0200 to 0300	37	54
0300 to 0400	33	43
0400 to 0500	22	33
0500 to 0600	12	19
0600 to 0700	13	28
0700 to 0800	42	44
0800 to 0900	70	57
0900 to 1000	55	76
1000 to 1100	54	62
1100 to 1200	56	65
1200 to 1300	65	59
1300 to 1400	46	63
1400 to 1500	67	47
1500 to 1600	63	62
1600 to 1700	50	84
1700 to 1800	72	72
1800 to 1900	85	86
1900 to 2000	44	63
2000 to 2100	74	71
2100 to 2200	61	59
2200 to 2300	56	85
2300 to 2400	69	49



Current and Previous Months Comparison of Incidents by Beat

Albany Police Department

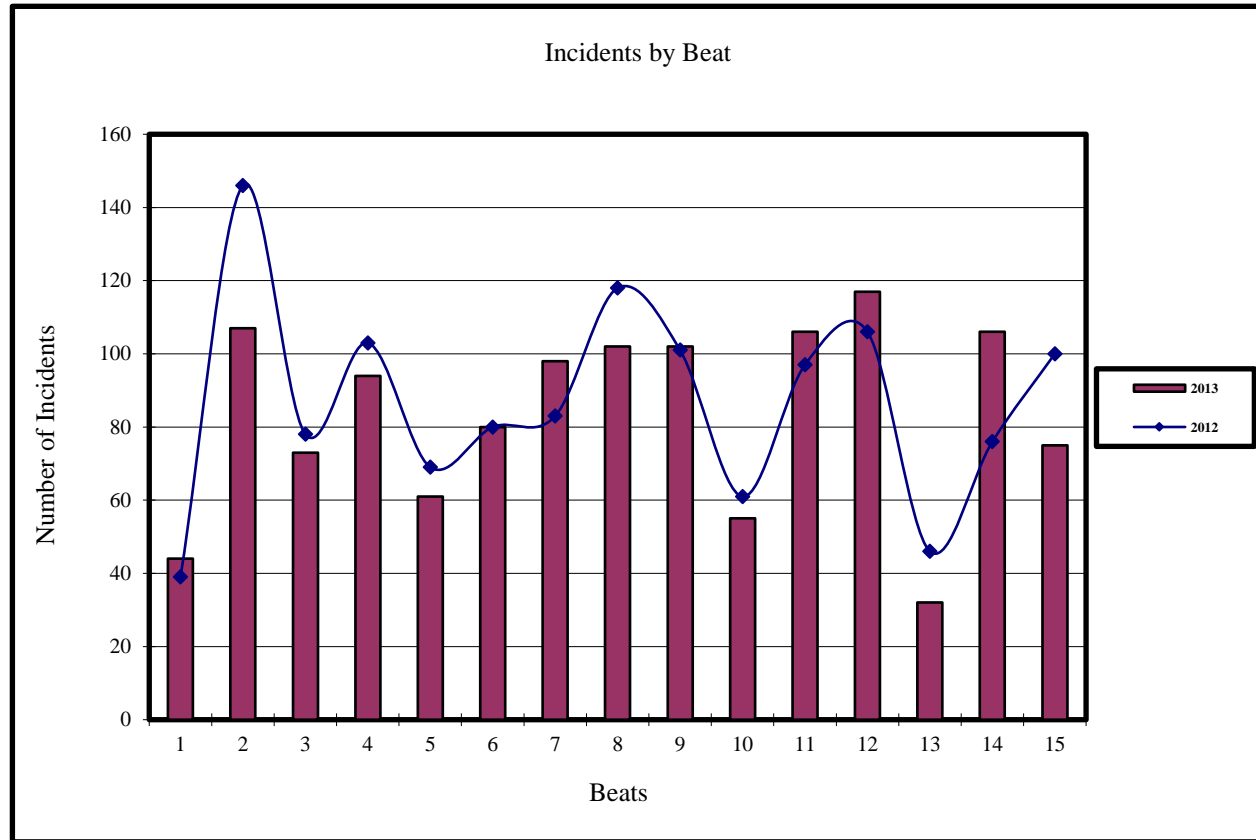
Beat	Incidents	
	Feb 2013	Jan 2013
Beat 1	44	49
Beat 2	107	105
Beat 3	73	92
Beat 4	94	89
Beat 5	61	61
Beat 6	80	84
Beat 7	98	114
Beat 8	102	118
Beat 9	102	136
Beat 10	55	80
Beat 11	106	125
Beat 12	117	111
Beat 13	32	70
Beat 14	106	98
Beat 15	75	90



Current and Previous Year Comparision of Incidents by Beat

Albany Police Department

Incidents		
Beat	Feb 2013	Feb 2012
Beat 1	44	39
Beat 2	107	146
Beat 3	73	78
Beat 4	94	103
Beat 5	61	69
Beat 6	80	80
Beat 7	98	83
Beat 8	102	118
Beat 9	102	101
Beat 10	55	61
Beat 11	106	97
Beat 12	117	106
Beat 13	32	46
Beat 14	106	76
Beat 15	75	100



Current and Previous Month Comparison of Monthly Incidents by Day of Week

Albany Police Department

Incidents		
Day	Feb 2013	Jan 2013
Sunday	166	156
Monday	147	181
Tuesday	181	245
Wednesday	173	192
Thursday	147	234
Friday	232	232
Saturday	206	182

