

ALBANY POLICE DEPARTMENT CRIME ANALYSIS

“Combating Crime and Protecting Lives”

Prepared By the Crime Analysis Unit of The Albany Police Department

****These numbers may be updated from month to month as records updates occur****

2014

Month of December

Distribution: CITY MANAGER, ASST. CITY MANAGERS

CHIEF OF POLICE
DEPUTY CHIEF - INVESTIGATIVE
DEPUTY CHIEF – UNIFORM
DEPUTY CHIEF – SUPPORT SERVICES
MAJOR - INTERNAL AFFAIRS
INVESTIGATIONS CAPTAINS
UNIFORM CAPTAINS
ACCREDITATION MANAGER

SPECIAL OPERATIONS CAPT.
FAMILY PROTECTION
RECORDS SUPERVISOR
PLANNING & RESEARCH
TRAINING SUPERVISOR
CHIEF'S ADMIN ASSISTANT
SUPPORT SERVICES LT

***Information Included in this Report Reflects
Compliance with UCR Reporting Standards**

The information contained in this report is primarily raw data until calendar year reporting.

Please contact David Sparks, APD Crime Analyst for questions regarding this report @ 431-2878.

Monthly Part I Crimes

Albany Police Department

Part I Crimes Committed During the Month of December 2014 with Comparisons of December 2013 & 2012

Actual Offenses	2014 2013 Month to Month		+/- Change		2014 2012 Month to Month		+/- Change	
Offenses Committed	December 2014	December 2013	#	%	December 2014	December 2012	#	%
Homicide	2	1	1	100.00	2	0	2	*NC
Rape	1	4	-3	-75.00	1	3	-2	-66.67
Robbery	10	21	-11	-52.38	10	23	-13	-56.52
Aggravated Assault	75	54	21	38.89	75	31	44	141.94
Violent Crime Total	88	80	8	10.00	88	57	31	54.39
Arson	2	2	0	0.00	2	0	2	*NC
Burglary	97	144	-47	-32.64	97	89	8	8.99
Larceny	201	243	-42	-17.28	201	279	-78	-27.96
Auto Theft	15	10	5	50.00	15	16	-1	-6.25
Property Crime Total	315	399	-84	-21.05	315	384	-69	-17.97
Crime Trend Total	403	479	-76	-15.87	403	441	-38	-8.62

Part I Case Clearances During the Month of December 2014 with Comparisons of December 2013 & 2012

	2014	2013	2012	2014	2013	2012
Offenses Cleared	December # Cleared	December # Cleared	December # Cleared	December % Cleared	December % Cleared	December % Cleared
Homicide	1	0	0	50.00%	0.00%	*NC
Rape	0	3	1	0.00%	75.00%	33.33%
Robbery	2	2	3	20.00%	9.52%	13.04%
Aggravated Assault	26	21	10	34.67%	38.89%	32.26%
Violent Crime Cleared	29	26	14	32.95%	32.50%	24.56%
Arson	0	0	0	0.00%	0.00%	*NC
Burglary	15	10	7	15.46%	6.94%	7.87%
Larceny	53	55	81	26.37%	22.63%	29.03%
Auto Theft	2	2	2	13.33%	20.00%	12.50%
Property Crime Cleared	70	67	90	22.22%	16.79%	23.44%
Clearance Total	99	93	104	24.57%	19.42%	23.58%

* The Crime Trend and Clearance Totals do not include percentages for numbers not divisible by 0.

Year to Date Part I Crimes

Albany Police Department

Part I Crimes Committed Year-to-date as of December 2014 with Comparisons of December 2013 & 2012								
Actual Offenses	2014 Year to Date		2013 Year to Date		+/- Change			
	December 2014	December 2013	#		%			
Offenses Committed								
Homicide	10	8	2		25.00			
Rape	26	21	5		23.81			
Robbery	157	183	-26		-14.21			
Aggravated Assault	558	546	12		2.20			
Violent Crime Total	751	758	-7		-0.92			
Arson	18	21	-3		-14.29			
Burglary	1170	1319	-149		-11.30			
Larceny	2838	3178	-340		-10.70			
Auto Theft	174	173	1		0.58			
Property Crime Total	4200	4691	-491		-10.47			
Crime Trend Total	4951	5449	-498		-9.14			

Part I Case Clearances Year-to-date as of December 2014 with Comparisons of December 2013 & 2012								
	2014	2013	2012					
Offenses Cleared	December # Cleared	December # Cleared	December # Cleared	2014	2013	2012		
				December % Cleared	December % Cleared	December % Cleared		
Homicide	5	5	3	50.00%	62.50%	75.00%		
Rape	18	9	16	69.23%	42.86%	59.26%		
Robbery	39	50	35	24.84%	27.32%	15.63%		
Aggravated Assault	254	227	241	45.52%	41.58%	43.11%		
Violent Crime Cleared	316	291	295	42.08%	38.39%	36.24%		
Arson	1	7	3	5.56%	33.33%	18.75%		
Burglary	139	156	134	11.88%	11.83%	9.54%		
Larceny	625	628	699	22.02%	19.76%	20.67%		
Auto Theft	44	37	41	25.29%	21.39%	18.14%		
Property Crime Cleared	809	828	877	19.26%	17.65%	17.44%		
Clearance Total	1125	1119	1172	22.72%	20.54%	20.06%		

* The Crime Trend and Clearance Totals do not include percentages for numbers not divisible by 0.

Monthly Part II and Other Crimes

Albany Police Department

Part II Crime Comparison of December 2014 Data with Previous Year/Month									
Part II Crimes	December 2014	December 2013	+/- #	Change %		December 2014	November 2014	+/- #	Change %
Disorderly Conduct	49	67	-18	-26.87		49	69	-20	-28.99
Domestic Violence	113	68	45	66.18		113	155	-42	-27.10
Disorderly w/intoxicated	0	0	0	*NC		0	0	0	*NC
D.U.I.	10	11	-1	-9.09		10	6	4	66.67
Child Molestation	1	2	-1	-50.00		1	3	-2	-66.67
Cruelty to Child	4	4	0	0.00		4	4	0	0.00
Child Protec: Curfew	0	0	0	*NC		0	0	0	*NC
Child Protec:Truancy	0	0	0	*NC		0	0	0	*NC
Interfere w/Custody	7	4	3	75.00		7	5	2	40.00
Child Abandonment	1	0	1	*NC		1	0	1	*NC
Enticing a Child	1	1	0	0.00		1	0	1	*NC
Forgery	13	11	2	18.18		13	12	1	8.33
Noise Ordinance Viol.	0	1	-1	-100.00		0	0	0	*NC
Harassing Phone Calls	8	6	2	33.33		8	5	3	60.00
Loitering	3	5	-2	-40.00		3	5	-2	-40.00
Missing Persons	24	24	0	0.00		24	18	6	33.33
Runaway	0	0	0	*NC		0	2	-2	-100.00
Suicide	2	0	2	*NC		2	1	1	100.00
Underage Poss./Consum.	0	1	-1	-100.00		0	3	-3	-100.00
Criminal Damage	19	17	2	11.76		19	28	-9	-32.14
Theft: Gas Drive Off	0	0	0	*NC		0	2	-2	-100.00
Simple Assault	3	5	-2	-40.00		3	2	1	50.00
Simple Battery	67	94	-27	-28.72		67	81	-14	-17.28
Battery	29	24	5	20.83		29	26	3	11.54
Obstruct/Hinder Police	7	24	-17	-70.83		7	20	-13	-65.00
Sexual Battery	1	1	0	0.00		1	0	1	*NC
Open Container	10	4	6	150.00		10	16	-6	-37.50
Sodomy	0	1	-1	-100.00		0	0	0	*NC
Statutory Rape	0	0	0	*NC		0	0	0	*NC
Saggy Pants	0	6	-6	-100.00		0	1	-1	-100.00
All Cases Not Listed	439	607	-168	-27.68		439	457	-18	-3.94
Total Part II Crime	811	988	-177	-17.91		811	921	-110	-11.94

** The Crime Trend and Clearance Totals do not include percentages for numbers not able to be divided by 0.

Year to Date Part II and Other Crimes

Albany Police Department

Part II Crime Comparison of 2014 Year to Date with Previous Years 2013 & 2012									
Part II Crimes	December 2014	December 2013	+/- #	Change %		December 2014	December 2012	+/- #	Change %
Disorderly Conduct	793	894	-101	-11.30		793	938	-145	-15.46
Domestic Violence	1590	1748	-158	-9.04		1590	1995	-405	-20.30
Disorderly wh/intoxicated	0	0	0	*NC		0	0	0	*NC
D.U.I.	129	122	7	5.74		129	116	13	11.21
Child Molestation	43	37	6	16.22		43	52	-9	-17.31
Child Cruelty	52	46	6	13.04		52	49	3	6.12
Curfew	0	3	-3	-100.00		0	5	-5	-100.00
Truancy	1	3	-2	-66.67		1	6	-5	-83.33
Interfere w/Custody	56	14	42	300.00		56	9	47	522.22
Child Abandonment	1	0	1	*NC		1	0	1	*NC
Enticing a Child	2	2	0	0.00		2	6	-4	-66.67
Forgery	148	223	-75	-33.63		148	193	-45	-23.32
Noise Ordinance Viol.	4	2	2	100.00		4	5	-1	-20.00
Harassing Phone Calls	77	76	1	1.32		77	143	-66	-46.15
Loitering	35	44	-9	-20.45		35	37	-2	-5.41
Missing Persons	251	245	6	2.45		251	430	-179	-41.63
Runaway	9	7	2	28.57		9	8	1	12.50
Suicide	7	4	3	75.00		7	6	1	16.67
Underage Poss./Consum.	27	20	7	35.00		27	19	8	42.11
Criminal Damage	300	273	27	9.89		300	354	-54	-15.25
Theft: Gas Drive Off	10	11	-1	-9.09		10	27	-17	-62.96
Simple Assault	30	97	-67	-69.07		30	74	-44	-59.46
Simple Battery	1048	1015	33	3.25		1048	1004	44	4.38
Battery	307	344	-37	-10.76		307	419	-112	-26.73
Obstruction of Officer	248	331	-83	-25.08		248	241	7	2.90
Sexual Battery	18	22	-4	-18.18		18	21	-3	-14.29
Open Container	204	134	70	52.24		204	222	-18	-8.11
Sodomy	15	16	-1	-6.25		15	13	2	15.38
Statutory Rape	7	8	-1	-12.50		7	7	0	0.00
Saggy Pants	149	327	-178	-54.43		149	252	-103	-40.87
All Other Cases	7065	7110	-45	-0.63		7065	6346	719	11.33
Total Part II Crime	12626	13178	-552	-4.19		12626	12997	-371	-2.85

** The Crime Trend and Clearance Totals do not include percentages for numbers not able to be divided by 0.

Monthly Part I Crimes by District

Albany Police Department

December 2014

West Actual Offenses			
Offenses Committed	Dec 2014	Nov 2014	Year to Date 2014
Homicide	1	0	3
Rape	0	0	10
Robbery	3	3	45
Aggravated Assault	24	8	144
Violent Crime Total	28	11	202
Arson	0	0	1
Burglary	34	42	402
Larceny	77	86	1182
Auto Theft	4	4	59
Property Crime Tot.	115	132	1644
Crime Trend Total	143	143	1846

Central Actual Offenses			
Offenses Committed	Dec 2014	Nov 2014	Year to Date 2014
Homicide	1	0	2
Rape	0	1	8
Robbery	5	7	74
Aggravated Assault	33	27	265
Violent Crime Total	39	35	349
Arson	0	0	4
Burglary	26	26	361
Larceny	59	65	841
Auto Theft	5	3	53
Property Crime Tot.	90	94	1259
Crime Trend Total	129	129	1608

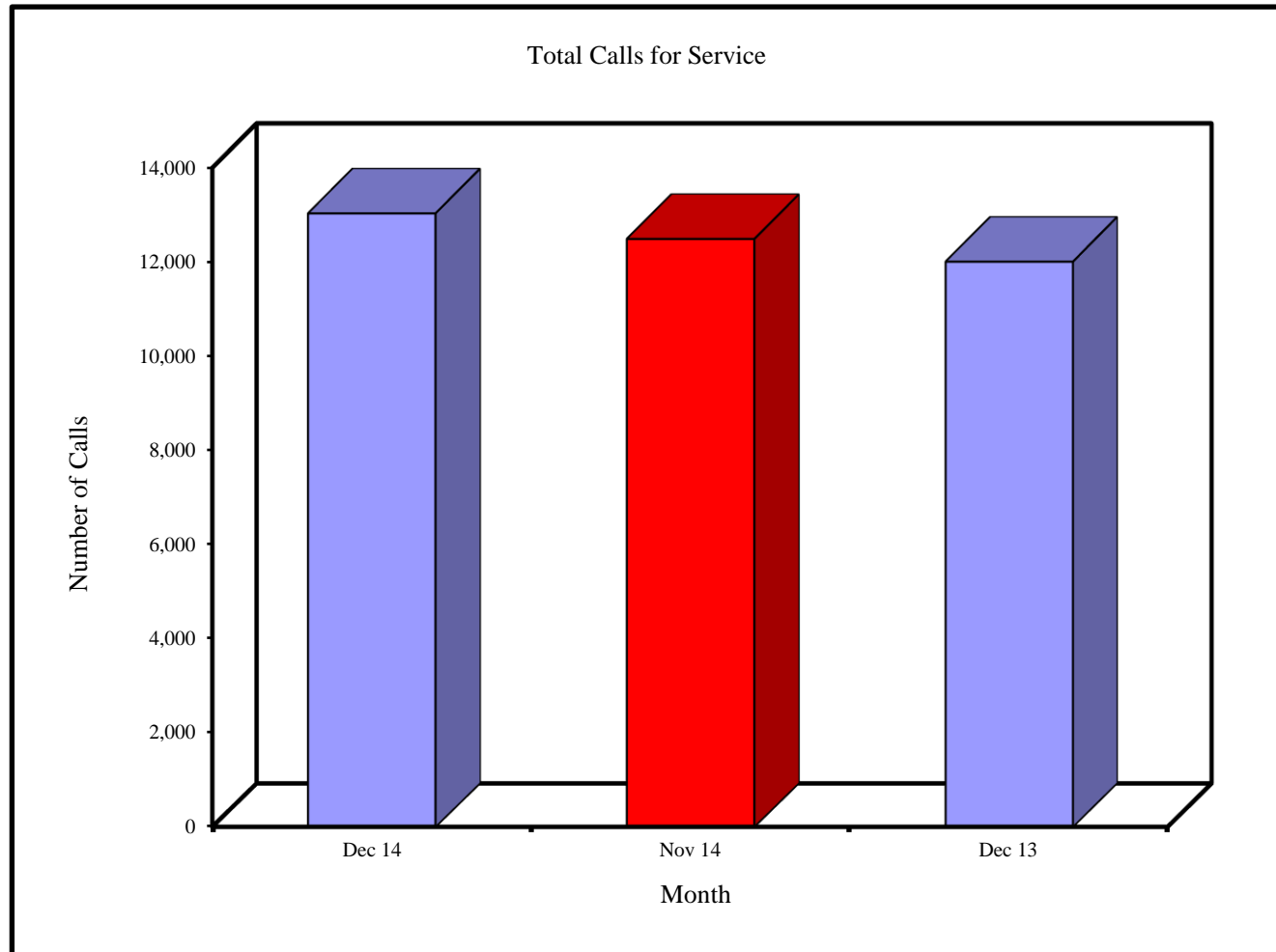
East Actual Offenses			
Offenses Committed	Dec 2014	Nov 2014	Year to Date 2014
Homicide	0	3	5
Rape	1	0	8
Robbery	2	3	38
Aggravated Assault	18	12	149
Violent Crime Total	21	18	200
Arson	2	3	13
Burglary	37	28	407
Larceny	65	53	815
Auto Theft	6	3	62
Property Crime Tot.	110	87	1297
Crime Trend Total	131	105	1497

Monthly Total Calls for Service

Albany Police Department

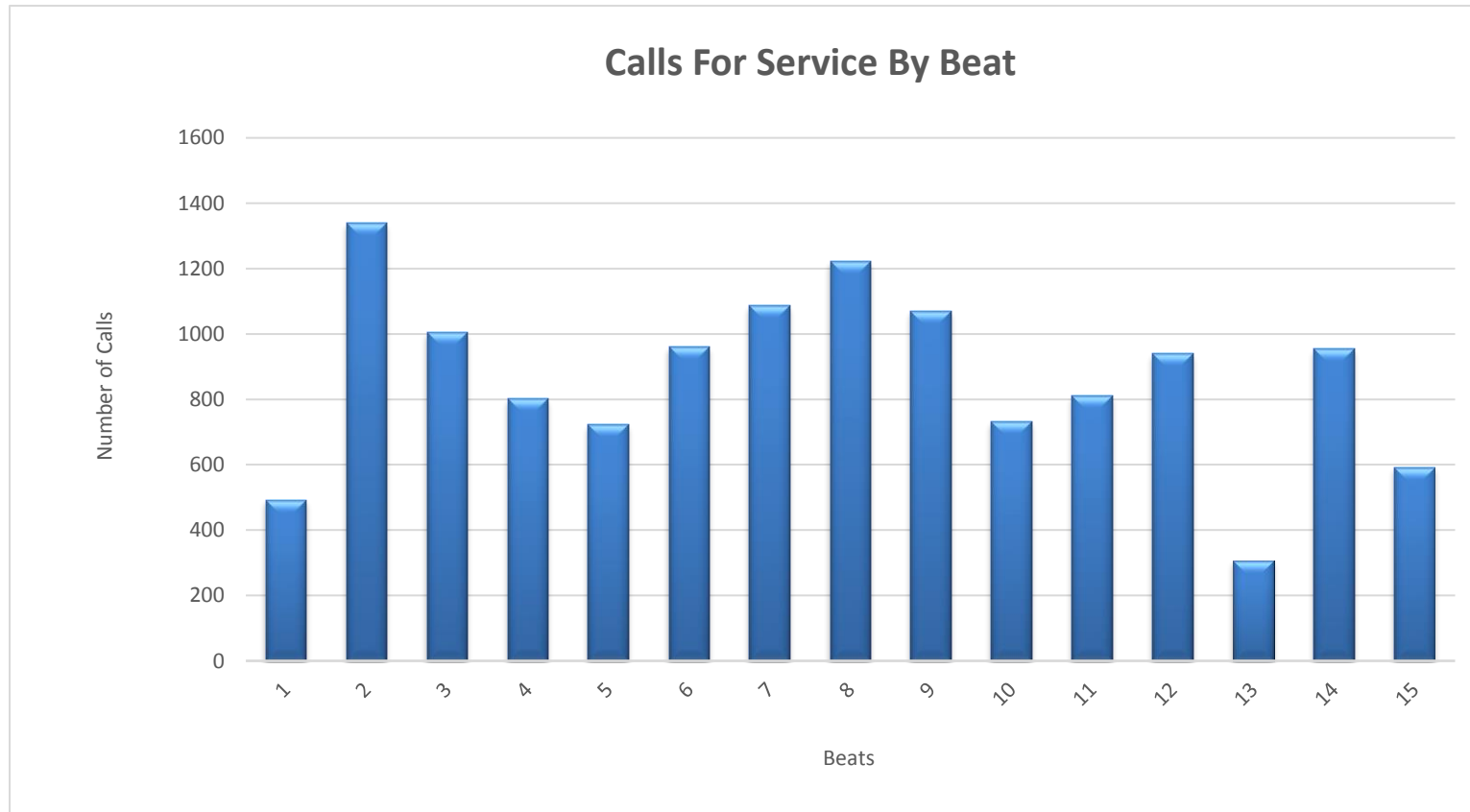
Total Calls For Service

Dec 14	Nov 14	Dec 13
13,038	12,497	12,017



Monthly Calls for Service by Beats

Albany Police Department

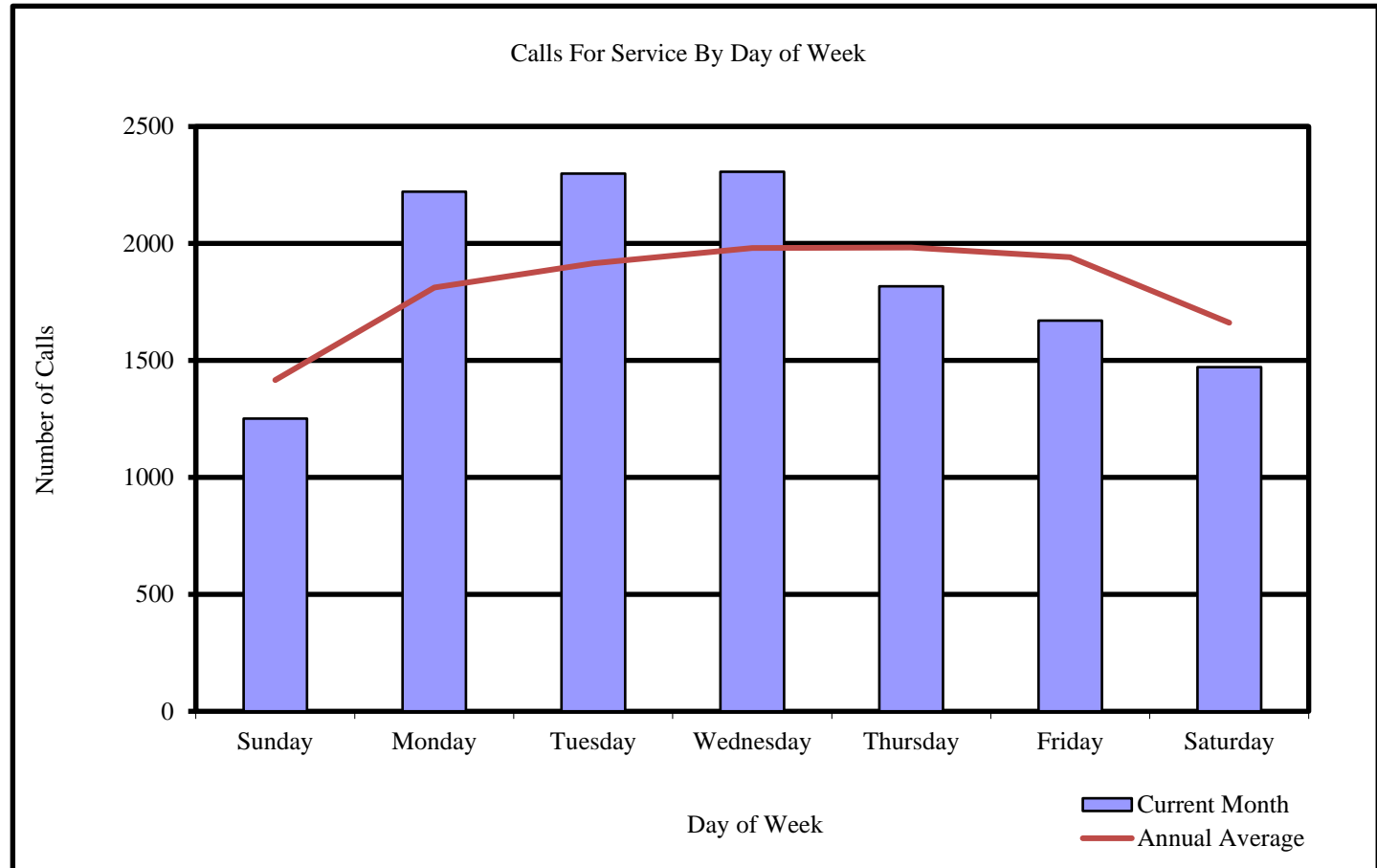


Beats	1	2	3	4	5	6	7	8	9	10	11	12	13	14	15
Calls in December 2014	492	1340	1005	803	722	961	1086	1223	1071	731	811	939	307	955	592

Monthly Calls for Service by Day of Week

Albany Police Department

<u>Calls For Service</u>	
Day	December 2014
Sunday	1251
Monday	2221
Tuesday	2299
Wednesday	2307
Thursday	1817
Friday	1671
Saturday	1472

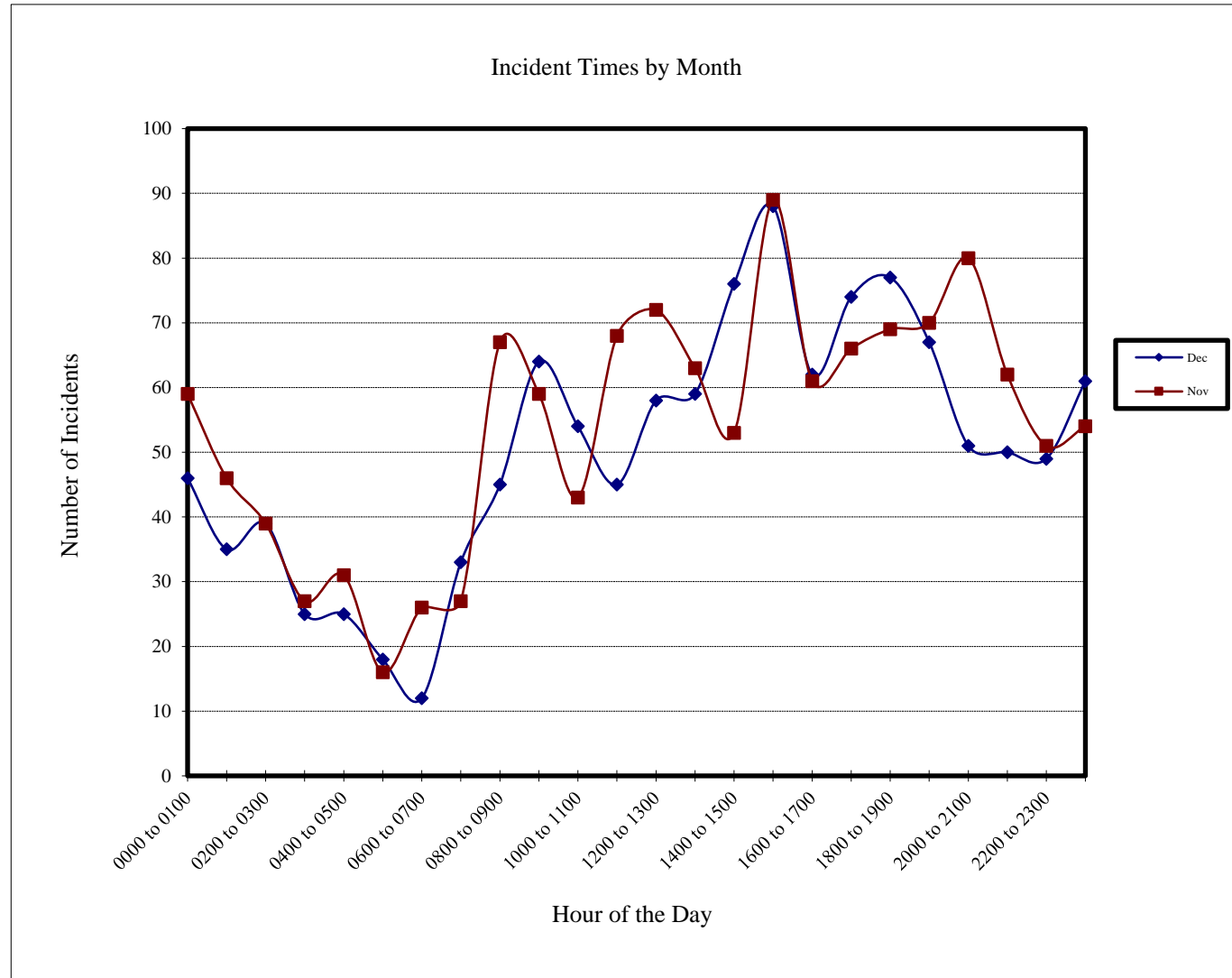


Incidents by Hour

Albany Police Department

Incident Times by Month

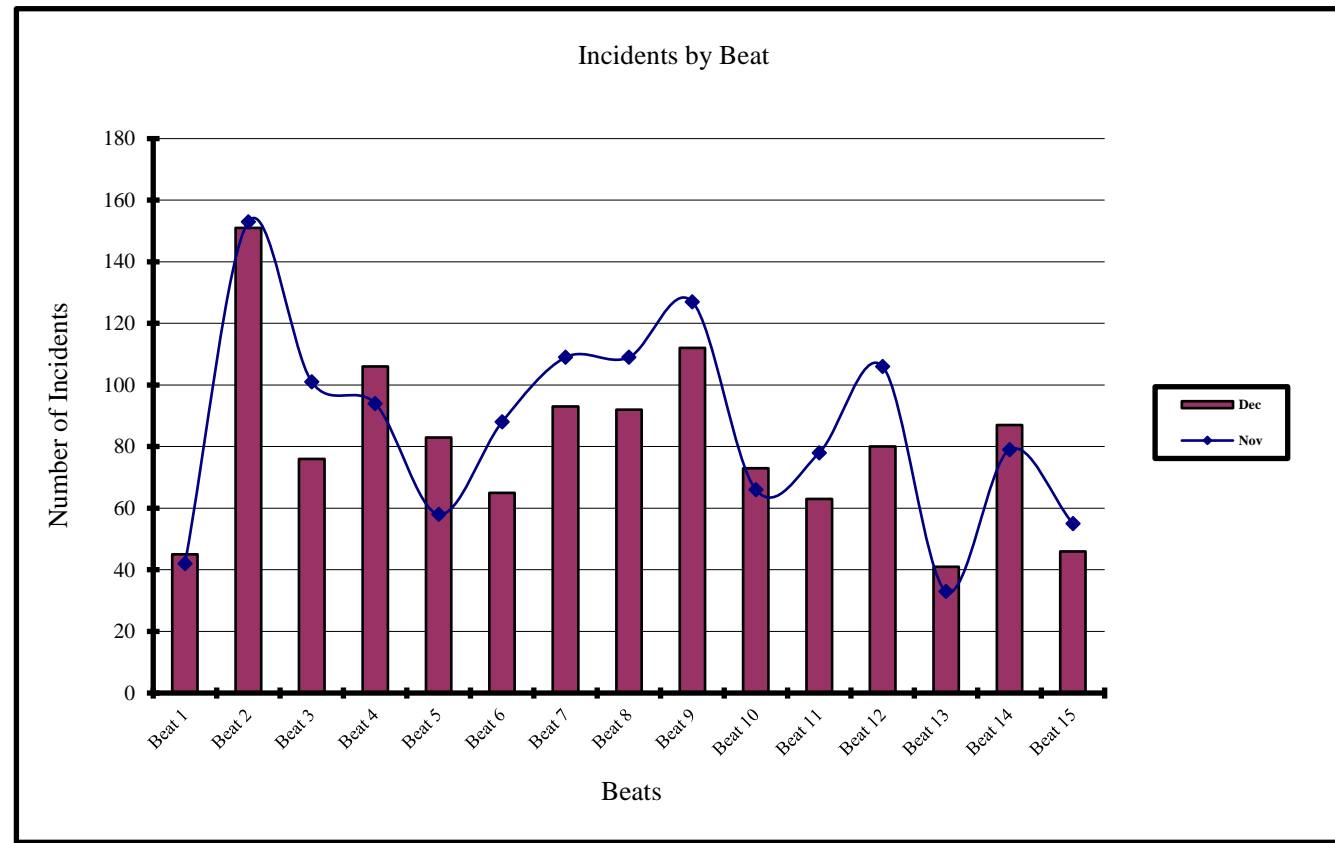
Hour of Day	Dec 2014	Nov 2014
0000 to 0100	46	59
0100 to 0200	35	46
0200 to 0300	39	39
0300 to 0400	25	27
0400 to 0500	25	31
0500 to 0600	18	16
0600 to 0700	12	26
0700 to 0800	33	27
0800 to 0900	45	67
0900 to 1000	64	59
1000 to 1100	54	43
1100 to 1200	45	68
1200 to 1300	58	72
1300 to 1400	59	63
1400 to 1500	76	53
1500 to 1600	88	89
1600 to 1700	62	61
1700 to 1800	74	66
1800 to 1900	77	69
1900 to 2000	67	70
2000 to 2100	51	80
2100 to 2200	50	62
2200 to 2300	49	51
2300 to 2400	61	54



Current and Previous Months Comparison of Incidents by Beat

Albany Police Department

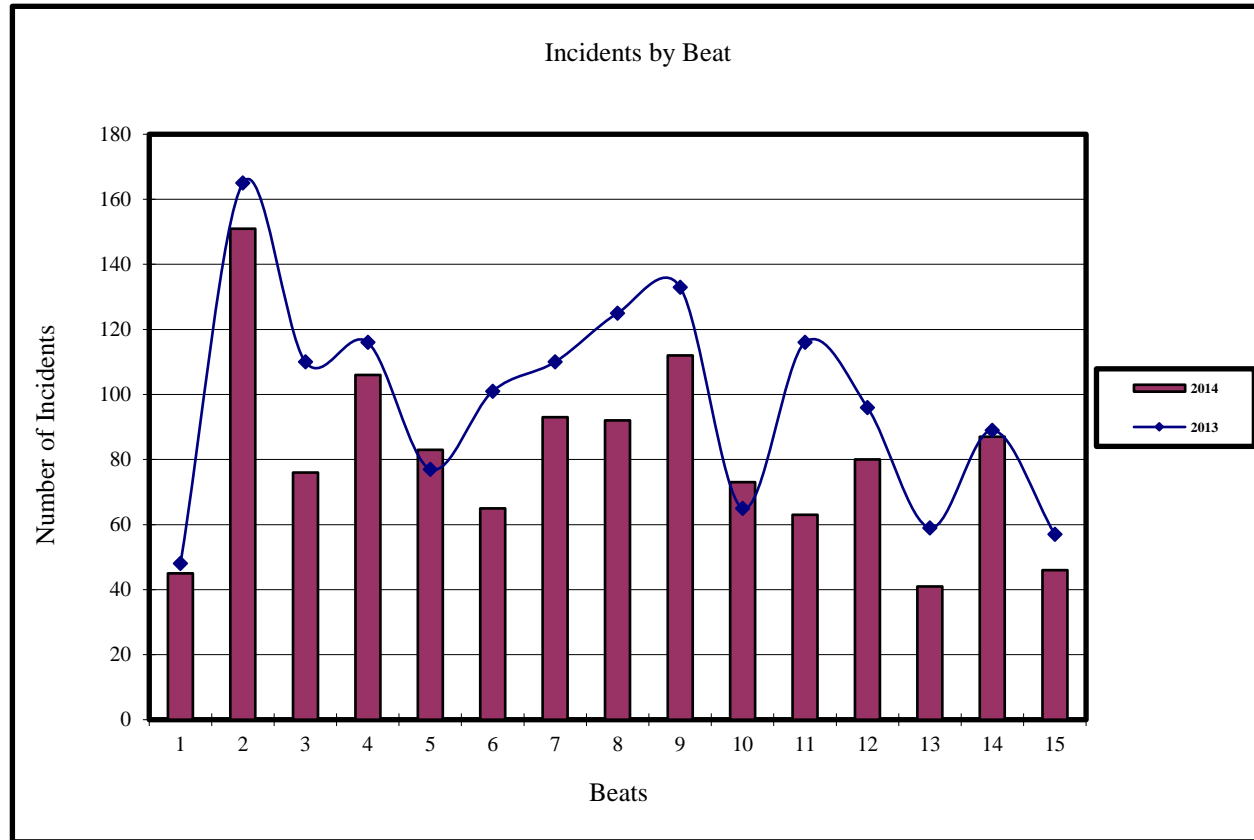
Beat	Incidents	
	Dec 2014	Nov 2014
Beat 1	45	42
Beat 2	151	153
Beat 3	76	101
Beat 4	106	94
Beat 5	83	58
Beat 6	65	88
Beat 7	93	109
Beat 8	92	109
Beat 9	112	127
Beat 10	73	66
Beat 11	63	78
Beat 12	80	106
Beat 13	41	33
Beat 14	87	79
Beat 15	46	55



Current and Previous Year Comparision of Incidents by Beat

Albany Police Department

Beat	Incidents	
	Dec 2014	Dec 2013
Beat 1	45	48
Beat 2	151	165
Beat 3	76	110
Beat 4	106	116
Beat 5	83	77
Beat 6	65	101
Beat 7	93	110
Beat 8	92	125
Beat 9	112	133
Beat 10	73	65
Beat 11	63	116
Beat 12	80	96
Beat 13	41	59
Beat 14	87	89
Beat 15	46	57



Current and Previous Month Comparison of Monthly Incidents by Day of Week Albany Police Department

Incidents		
Day	Dec 2014	Nov 2014
Sunday	169	187
Monday	182	175
Tuesday	177	172
Wednesday	169	166
Thursday	159	159
Friday	185	194
Saturday	172	243

