

# **ALBANY POLICE DEPARTMENT CRIME ANALYSIS**

**“Combating Crime and Protecting Lives”**

***Prepared By the Crime Analysis Unit of The Albany Police Department***

**\*\*These numbers may be updated from month to month as records updates occur\*\***

# 2015

**Month of October**

**Distribution: CITY MANAGER, ASST. CITY MANAGERS**

CHIEF OF POLICE  
DEPUTY CHIEF - INVESTIGATIVE  
DEPUTY CHIEF – UNIFORM  
DEPUTY CHIEF – SUPPORT SERVICES  
MAJOR - INTERNAL AFFAIRS  
INVESTIGATIONS CAPTAINS  
UNIFORM CAPTAINS  
ACCREDITATION MANAGER

SPECIAL OPERATIONS CAPT.  
FAMILY PROTECTION  
RECORDS SUPERVISOR  
PLANNING & RESEARCH  
TRAINING SUPERVISOR  
CHIEF'S ADMIN ASSISTANT  
SUPPORT SERVICES LT

**\*Information Included in this Report Reflects  
Compliance with UCR Reporting Standards**

***The information contained in this report is primarily raw data until calendar year reporting.***

Please contact David Sparks, APD Crime Analyst for questions regarding this report @ 431-2878.

# Monthly Part I Crimes

## Albany Police Department

### Part I Crimes Committed During the Month of October 2015 with Comparisons of October 2014 & 2013

Actual Offenses	2015 2014 Month to Month		+/- Change		2015 2013 Month to Month		+/- Change	
Offenses Committed	October 2015	October 2014	#	%	October 2015	October 2013	#	%
Homicide	0	1	-1	-100.00	0	0	0	*NC
Rape	4	2	2	100.00	4	3	1	33.33
Robbery	25	11	14	127.27	25	23	2	8.70
Aggravated Assault	45	53	-8	-15.09	45	65	-20	-30.77
<b>Violent Crime Total</b>	<b>74</b>	<b>67</b>	<b>7</b>	<b>10.45</b>	<b>74</b>	<b>91</b>	<b>-17</b>	<b>-18.68</b>
Arson	1	1	0	0.00	1	1	0	0.00
Burglary	109	64	45	70.31	109	127	-18	-14.17
Larceny	195	229	-34	-14.85	195	215	-20	-9.30
Auto Theft	14	15	-1	-6.67	14	13	1	7.69
<b>Property Crime Total</b>	<b>319</b>	<b>309</b>	<b>10</b>	<b>3.24</b>	<b>319</b>	<b>356</b>	<b>-37</b>	<b>-10.39</b>
<b>Crime Trend Total</b>	<b>393</b>	<b>376</b>	<b>17</b>	<b>4.52</b>	<b>393</b>	<b>447</b>	<b>-54</b>	<b>-12.08</b>

### Part I Case Clearances During the Month of October 2015 with Comparisons of October 2014 & 2013

	2015	2014	2013	2015	2014	2013
Offenses Cleared	October # Cleared	October # Cleared	October # Cleared	October % Cleared	October % Cleared	October % Cleared
Homicide	0	1	0	*NC	100.00%	*NC
Rape	2	2	1	50.00%	100.00%	33.33%
Robbery	6	0	2	24.00%	0.00%	8.70%
Aggravated Assault	23	28	12	51.11%	52.83%	18.46%
<b>Violent Crime Cleared</b>	<b>31</b>	<b>31</b>	<b>15</b>	<b>41.89%</b>	<b>46.27%</b>	<b>16.48%</b>
Arson	0	0	0	0.00%	0.00%	0.00%
Burglary	14	9	12	12.84%	14.06%	9.45%
Larceny	60	41	52	30.77%	17.90%	24.19%
Auto Theft	6	3	5	42.86%	20.00%	38.46%
<b>Property Crime Cleared</b>	<b>80</b>	<b>53</b>	<b>69</b>	<b>25.08%</b>	<b>17.15%</b>	<b>19.38%</b>
<b>Clearance Total</b>	<b>111</b>	<b>84</b>	<b>84</b>	<b>28.24%</b>	<b>22.34%</b>	<b>18.79%</b>

\* The Crime Trend and Clearance Totals do not include percentages for numbers not divisible by 0.

# Year to Date Part I Crimes

## Albany Police Department

Part I Crimes Committed Year-to-date as of October 2015 with Comparisons of October 2014 & 2013									
Actual Offenses	2015      2014 Year to Date		+/- Change			2015      2013 Year to Date		+/- Change	
	October 2015	October 2014	#	%		October 2015	October 2013	#	%
Offenses Committed									
Homicide	8	5	3	60.00		8	7	1	14.29
Rape	29	24	5	20.83		29	16	13	81.25
Robbery	164	134	30	22.39		164	146	18	12.33
Aggravated Assault	463	436	27	6.19		463	442	21	4.75
Violent Crime Total	664	599	65	10.85		664	611	53	8.67
Arson	24	13	11	84.62	24	19	5	26.32	
Burglary	966	977	-11	-1.13	966	1051	-85	-8.09	
Larceny	2233	2433	-200	-8.22	2233	2707	-474	-17.51	
Auto Theft	153	149	4	2.68	153	145	8	5.52	
Property Crime Total	3376	3572	-196	-5.49	3376	3922	-546	-13.92	
Crime Trend Total	4040	4171	-131	-3.14	4040	4533	-493	-10.88	

Part I Case Clearances Year-to-date as of October 2015 with Comparisons of October 2014 & 2013								
Offenses Cleared	2015	2014	2013		2015	2014	2013	
	October # Cleared	October # Cleared	October # Cleared		October % Cleared	October % Cleared	October % Cleared	
Homicide	6	4	5		75.00%	80.00%	71.43%	
Rape	14	18	6		48.28%	75.00%	37.50%	
Robbery	46	32	42		28.05%	23.88%	28.77%	
Aggravated Assault	239	205	184		51.62%	47.02%	41.63%	
<b>Violent Crime Cleared</b>	<b>305</b>	<b>259</b>	<b>237</b>		<b>45.93%</b>	<b>43.24%</b>	<b>38.79%</b>	
Arson	12	0	7		50.00%	0.00%	36.84%	
Burglary	152	116	137		15.73%	11.87%	13.04%	
Larceny	496	523	529		22.21%	21.50%	19.54%	
Auto Theft	47	40	34		30.72%	26.85%	23.45%	
<b>Property Crime Cleared</b>	<b>707</b>	<b>679</b>	<b>707</b>		<b>20.94%</b>	<b>19.01%</b>	<b>18.03%</b>	
<b>Clearance Total</b>	<b>1012</b>	<b>938</b>	<b>944</b>		<b>25.05%</b>	<b>22.49%</b>	<b>20.83%</b>	

\* The Crime Trend and Clearance Totals do not include percentages for numbers not divisible by 0.

# Monthly Part II and Other Crimes

## Albany Police Department

Part II Crime Comparison of October 2014 Data with Previous Year/Month								
Part II Crimes	October 2015	October 2014	+/- #	Change %		October 2015	September 2015	+/- #
				%				
Disorderly Conduct	107	73	34	46.58		107	111	-4
Domestic Violence	57	155	-98	-63.23		57	68	-11
Disorderly w/intoxicated	0	0	0	*NC		0	1	-1
D.U.I.	9	18	-9	-50.00		9	17	-8
Child Molestation	3	6	-3	-50.00		3	2	1
Cruelty to Child	0	0	0	*NC		0	0	0
Child Protec: Curfew	0	0	0	*NC		0	0	0
Child Protec:Truancy	0	0	0	*NC		0	0	0
Interfere w/Custody	0	6	-6	-100.00		0	0	0
Child Abandonment	0	0	0	*NC		0	0	0
Enticing a Child	0	0	0	*NC		0	0	0
Forgery	17	19	-2	-10.53		17	11	6
Noise Ordinance Viol.	0	0	0	*NC		0	0	0
Harassing Phone Calls	3	6	-3	-50.00		3	9	-6
Loitering	2	4	-2	-50.00		2	1	1
Missing Persons	17	27	-10	-37.04		17	18	-1
Runaway	2	0	2	*NC		2	4	-2
Suicide	9	2	7	350.00		9	0	9
Underage Poss./Consum.	2	1	1	100.00		2	0	2
Criminal Damage	26	38	-12	-31.58		26	31	-5
Theft: Gas Drive Off	0	0	0	*NC		0	0	0
Simple Assault	0	1	-1	-100.00		0	7	-7
Simple Battery	15	69	-54	-78.26		15	8	7
Battery	10	28	-18	-64.29		10	11	-1
Obstruct/Hinder Police	19	21	-2	-9.52		19	4	15
Sexual Battery	1	2	-1	-50.00		1	1	0
Open Container	5	15	-10	-66.67		5	12	-7
Sodomy	1	1	0	0.00		1	0	1
Statutory Rape	0	0	0	*NC		0	0	0
Saggy Pants	7	16	-9	-56.25		7	9	-2
All Cases Not Listed	301	560	-259	-46.25		301	267	34
<b>Total Part II Crime</b>	<b>613</b>	<b>1068</b>	<b>-455</b>	<b>-42.60</b>		<b>613</b>	<b>592</b>	<b>21</b>

\*\* The Crime Trend and Clearance Totals do not include percentages for numbers not able to be divided by 0.

# Year to Date Part II and Other Crimes

## Albany Police Department

Part II Crime Comparison of 2015 Year to Date with Previous Years 2014 & 2013									
Part II Crimes	YTD 2015	YTD 2014	+/- #	Change %		YTD 2015	YTD 2013	+/- #	Change %
Disorderly Conduct	744	675	69	10.22		744	759	-15	-1.98
Domestic Violence	1281	1322	-41	-3.10		1281	1562	-281	-17.99
Disorderly wh/intoxicated	2	0	2	*NC		2	0	2	*NC
D.U.I.	102	113	-11	-9.73		102	97	5	5.15
Child Molestation	22	39	-17	-43.59		22	34	-12	-35.29
Child Cruelty	17	44	-27	-61.36		17	35	-18	-51.43
Curfew	3	0	3	*NC		3	3	0	0.00
Truancy	5	1	4	400.00		5	3	2	66.67
Interfere w/Custody	35	44	-9	-20.45		35	8	27	337.50
Child Abandonment	0	0	0	*NC		0	0	0	*NC
Enticing a Child	2	1	1	100.00		2	1	1	100.00
Forgery	117	123	-6	-4.88		117	202	-85	-42.08
Noise Ordinance Viol.	0	4	-4	-100.00		0	1	-1	-100.00
Harassing Phone Calls	46	64	-18	-28.13		46	63	-17	-26.98
Loitering	20	27	-7	-25.93		20	37	-17	-45.95
Missing Persons	194	209	-15	-7.18		194	200	-6	-3.00
Runaway	21	7	14	200.00		21	7	14	200.00
Suicide	33	4	29	725.00		33	4	29	725.00
Underage Poss./Consum.	5	24	-19	-79.17		5	17	-12	-70.59
Criminal Damage	208	253	-45	-17.79		208	236	-28	-11.86
Theft: Gas Drive Off	5	8	-3	-37.50		5	11	-6	-54.55
Simple Assault	35	25	10	40.00		35	87	-52	-59.77
Simple Battery	435	900	-465	-51.67		435	843	-408	-48.40
Battery	168	252	-84	-33.33		168	298	-130	-43.62
Obstruction of Officer	133	221	-88	-39.82		133	270	-137	-50.74
Sexual Battery	17	17	0	0.00		17	18	-1	-5.56
Open Container	112	178	-66	-37.08		112	115	-3	-2.61
Sodomy	4	15	-11	-73.33		4	14	-10	-71.43
Statutory Rape	4	7	-3	-42.86		4	7	-3	-42.86
Saggy Pants	59	148	-89	-60.14		59	313	-254	-81.15
All Other Cases	4050	6169	-2119	-34.35		4050	5925	-1875	-31.65
Total Part II Crime	7879	10894	-3015	-27.68		7879	11170	-3291	-29.46

\*\* The Crime Trend and Clearance Totals do not include percentages for numbers not able to be divided by 0.

# Monthly Part I Crimes by District

## Albany Police Department

### October 2015

West Actual Offenses			
Offenses Committed	October 2015	September 2015	Year to Date 2015
Homicide	0	0	1
Rape	1	0	8
Robbery	10	9	50
Aggravated Assault	16	5	116
<b>Violent Crime Total</b>	<b>27</b>	<b>14</b>	<b>175</b>
Arson	1	1	2
Burglary	38	34	322
Larceny	70	82	862
Auto Theft	6	4	58
<b>Property Crime Tot.</b>	<b>115</b>	<b>121</b>	<b>1244</b>
<b>Crime Trend Total</b>	<b>142</b>	<b>135</b>	<b>1419</b>

Central Actual Offenses			
Offenses Committed	October 2015	September 2015	Year to Date 2015
Homicide	0	1	6
Rape	1	0	7
Robbery	11	7	76
Aggravated Assault	19	11	215
<b>Violent Crime Total</b>	<b>31</b>	<b>19</b>	<b>304</b>
Arson	0	1	11
Burglary	38	32	275
Larceny	63	44	687
Auto Theft	5	5	52
<b>Property Crime Tot.</b>	<b>106</b>	<b>82</b>	<b>1025</b>
<b>Crime Trend Total</b>	<b>137</b>	<b>101</b>	<b>1329</b>

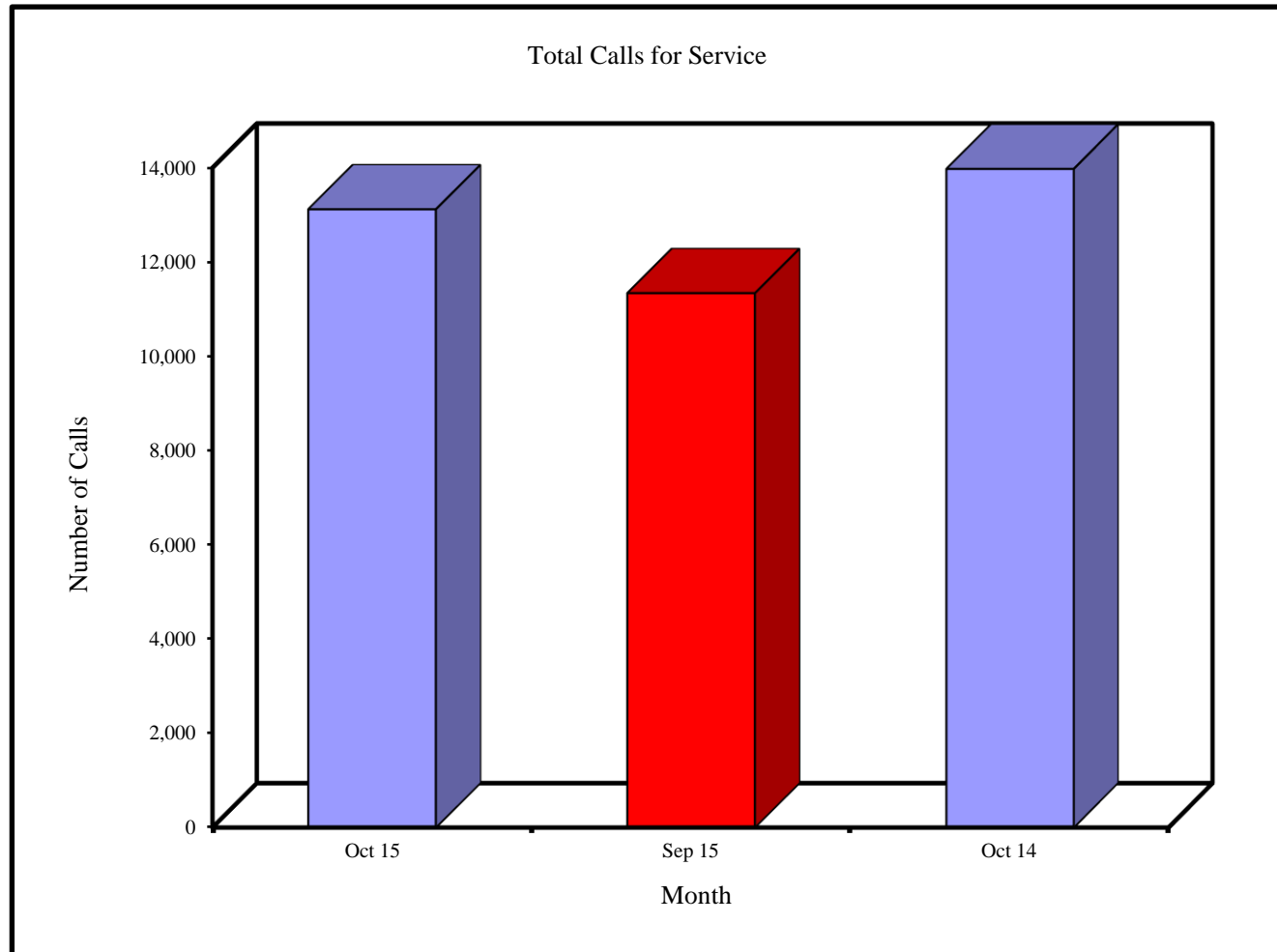
East Actual Offenses			
Offenses Committed	October 2015	September 2015	Year to Date 2015
Homicide	0	0	1
Rape	2	1	14
Robbery	4	5	38
Aggravated Assault	10	18	132
<b>Violent Crime Total</b>	<b>16</b>	<b>24</b>	<b>185</b>
Arson	0	0	11
Burglary	33	35	369
Larceny	62	68	684
Auto Theft	3	4	43
<b>Property Crime Tot.</b>	<b>98</b>	<b>107</b>	<b>1107</b>
<b>Crime Trend Total</b>	<b>114</b>	<b>131</b>	<b>1292</b>

# Monthly Total Calls for Service

## Albany Police Department

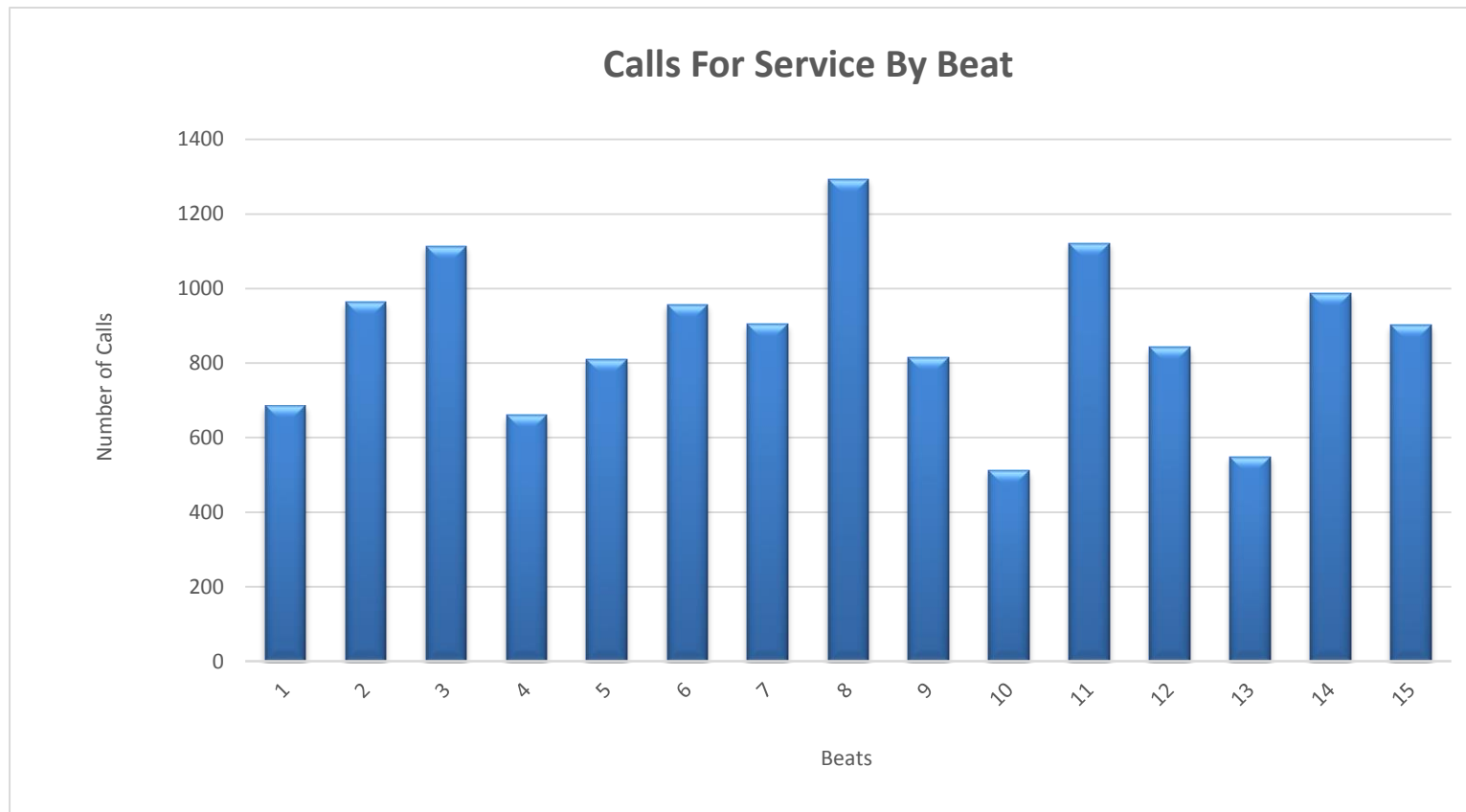
### Total Calls For Service

Oct 15	Sep 15	Oct 14
13,118	11,339	13,976



# Monthly Calls for Service by Beats

## Albany Police Department



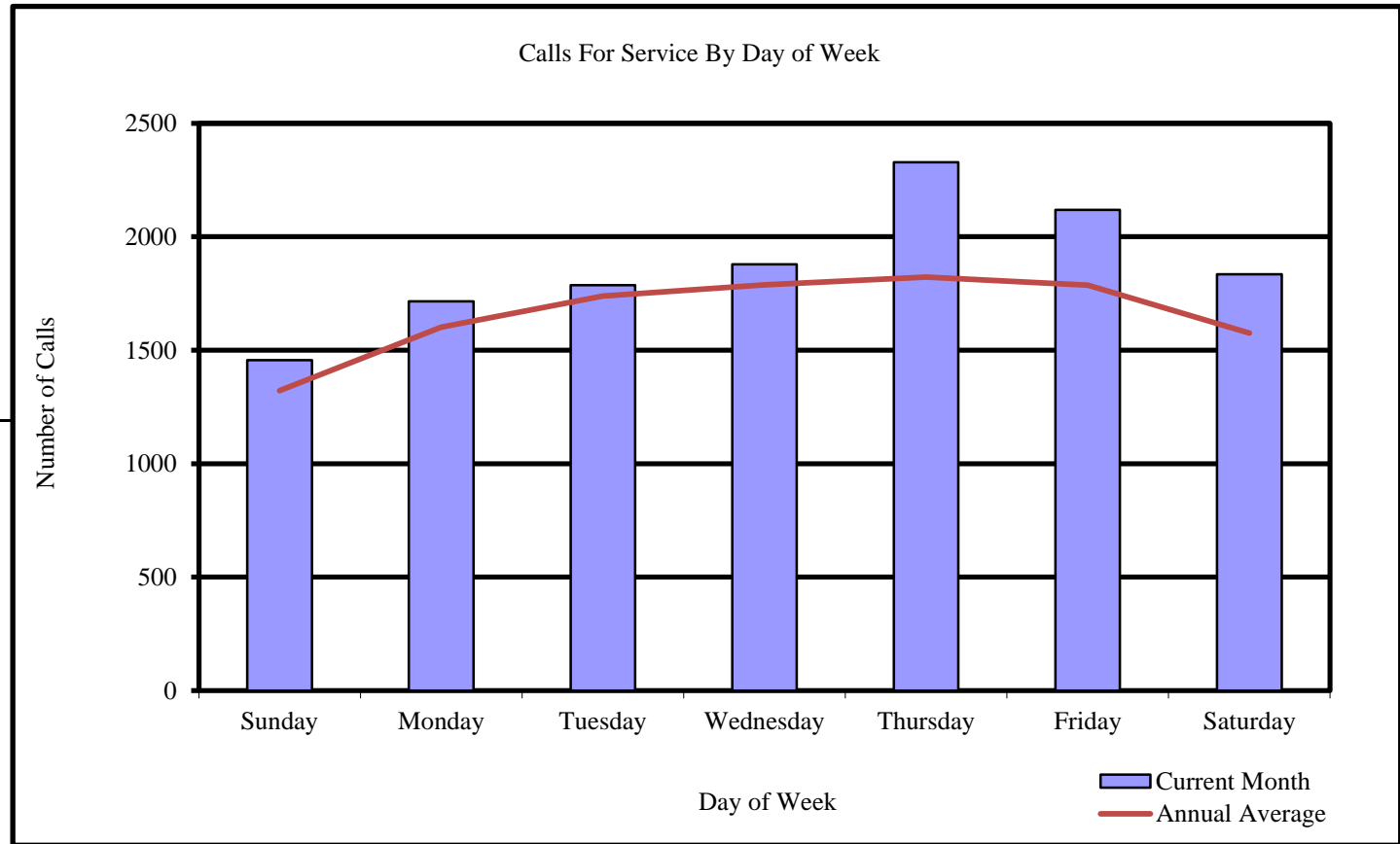
Beats	1	2	3	4	5	6	7	8	9	10	11	12	13	14	15
Calls in Oct 2015	685	963	1114	661	810	957	905	1294	816	511	1122	842	549	986	903



# Monthly Calls for Service by Day of Week

## Albany Police Department

<u>Calls For Service</u>	
Day	Sep 2015
Sunday	1456
Monday	1716
Tuesday	1786
Wednesday	1879
Thursday	2328
Friday	2118
Saturday	1835
	<hr/> 13118

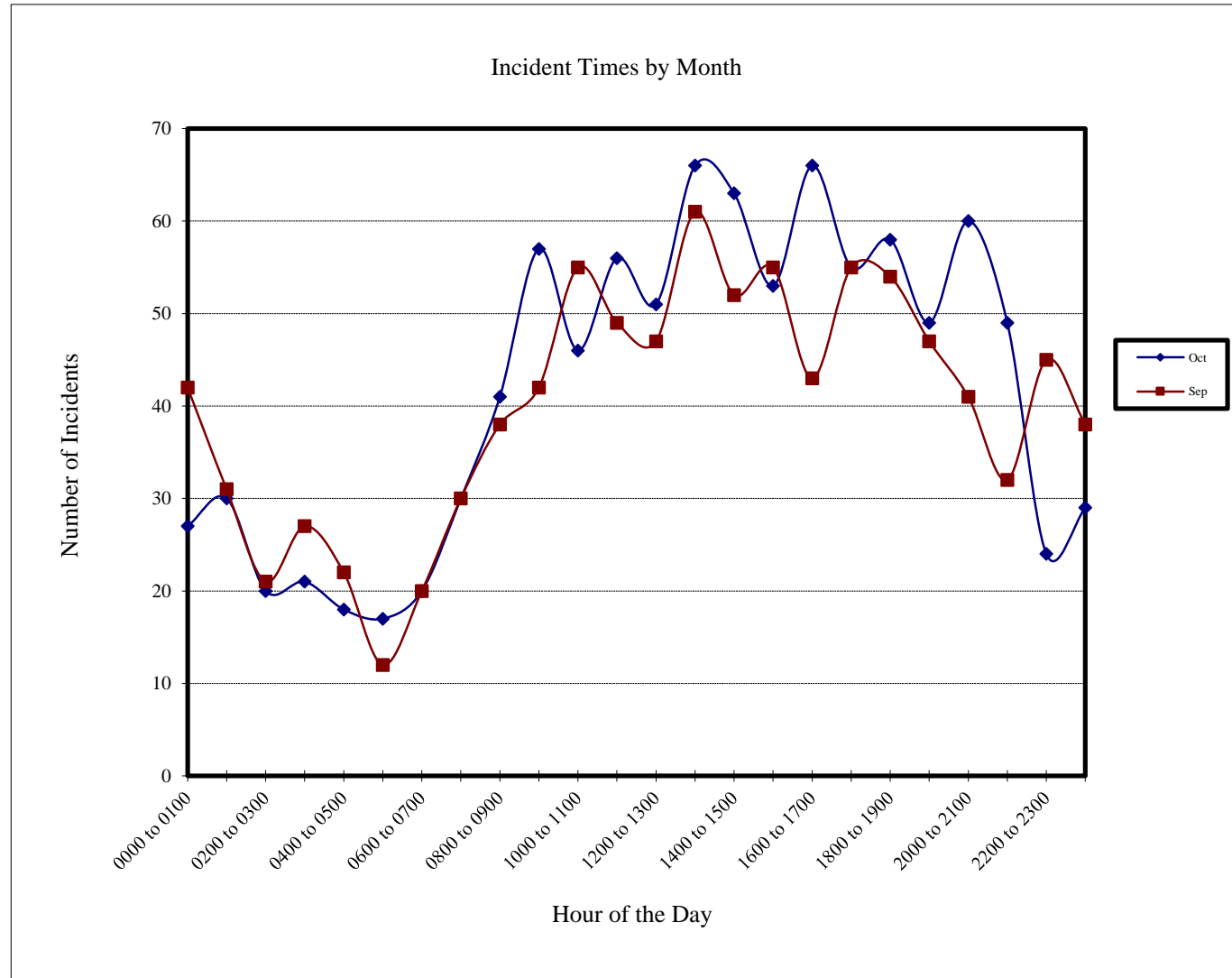


# Incidents by Hour

## Albany Police Department

### Incident Times by Month

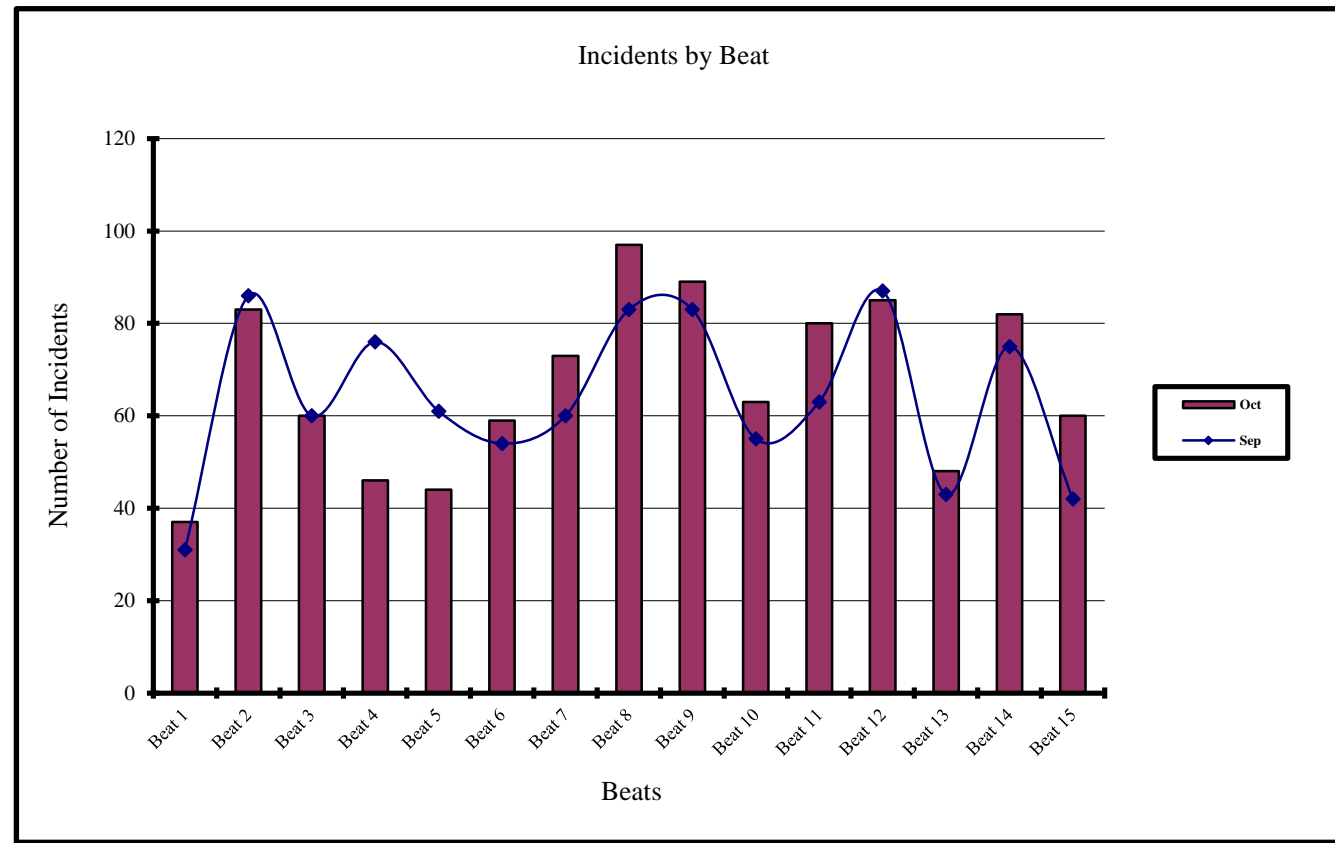
Hour of Day	Oct 2015	Sep 2015
0000 to 0100	27	42
0100 to 0200	30	31
0200 to 0300	20	21
0300 to 0400	21	27
0400 to 0500	18	22
0500 to 0600	17	12
0600 to 0700	20	20
0700 to 0800	30	30
0800 to 0900	41	38
0900 to 1000	57	42
1000 to 1100	46	55
1100 to 1200	56	49
1200 to 1300	51	47
1300 to 1400	66	61
1400 to 1500	63	52
1500 to 1600	53	55
1600 to 1700	66	43
1700 to 1800	55	55
1800 to 1900	58	54
1900 to 2000	49	47
2000 to 2100	60	41
2100 to 2200	49	32
2200 to 2300	24	45
2300 to 2400	29	38



# Current and Previous Months Comparision of Incidents by Beat

## Albany Police Department

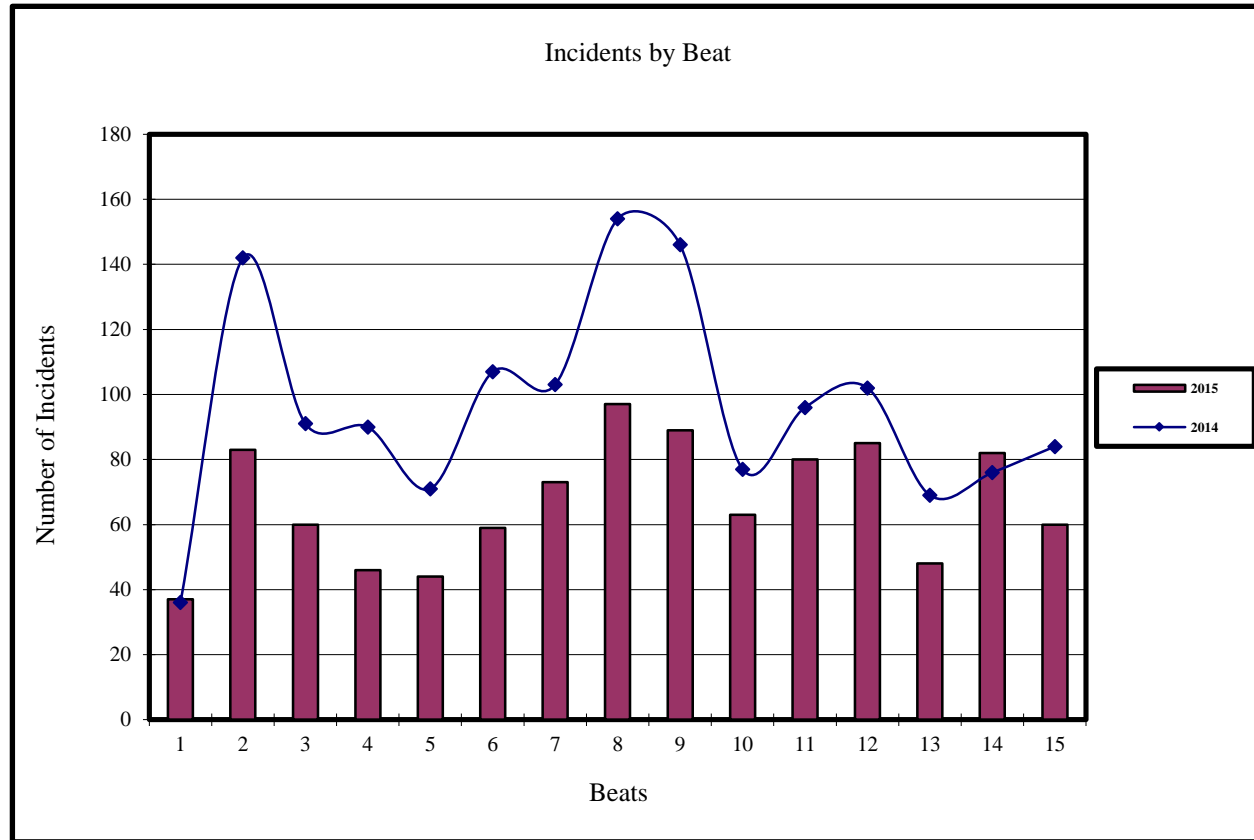
Beat	Incidents	
	Oct 2015	Sep 2015
Beat 1	37	31
Beat 2	83	86
Beat 3	60	60
Beat 4	46	76
Beat 5	44	61
Beat 6	59	54
Beat 7	73	60
Beat 8	97	83
Beat 9	89	83
Beat 10	63	55
Beat 11	80	63
Beat 12	85	87
Beat 13	48	43
Beat 14	82	75
Beat 15	60	42



# Current and Previous Year Comparision of Incidents by Beat

## Albany Police Department

Beat	Incidents	
	Oct 2015	Oct 2014
Beat 1	37	36
Beat 2	83	142
Beat 3	60	91
Beat 4	46	90
Beat 5	44	71
Beat 6	59	107
Beat 7	73	103
Beat 8	97	154
Beat 9	89	146
Beat 10	63	77
Beat 11	80	96
Beat 12	85	102
Beat 13	48	69
Beat 14	82	76
Beat 15	60	84



# Current and Previous Month Comparison of Monthly Incidents by Day of Week Albany Police Department

Incidents		
Day	Oct 2015	Sep 2015
Sunday	134	132
Monday	144	123
Tuesday	133	160
Wednesday	136	158
Thursday	147	138
Friday	151	132
Saturday	161	116

