

The background of the slide is a light gray gradient with several realistic water droplets of various sizes scattered across it. The droplets have highlights and shadows, giving them a three-dimensional appearance. The text is centered on the slide.

# **CITY OF ALBANY STORMWATER UTILITY**

COMMERCIAL, PUBLIC, AND INDUSTRIAL CUSTOMER  
OPEN HOUSE

FEBRUARY 6, 2014



# MEETING AGENDA

- PRESENTATION
  - STORMWATER MANAGEMENT PROGRAM
  - STORMWATER UTILITY INTRODUCTION
  - CREDIT OPPORTUNITIES
- QUESTIONS
- OPEN HOUSE
  - INDIVIDUAL MEETINGS WITH CITY STAFF TO REVIEW CUSTOMER INFORMATION



# STORMWATER MANAGEMENT PROGRAM





# TYPICAL STORMWATER RUNOFF IMPACTS





# IMPERVIOUS SURFACE CHANGE

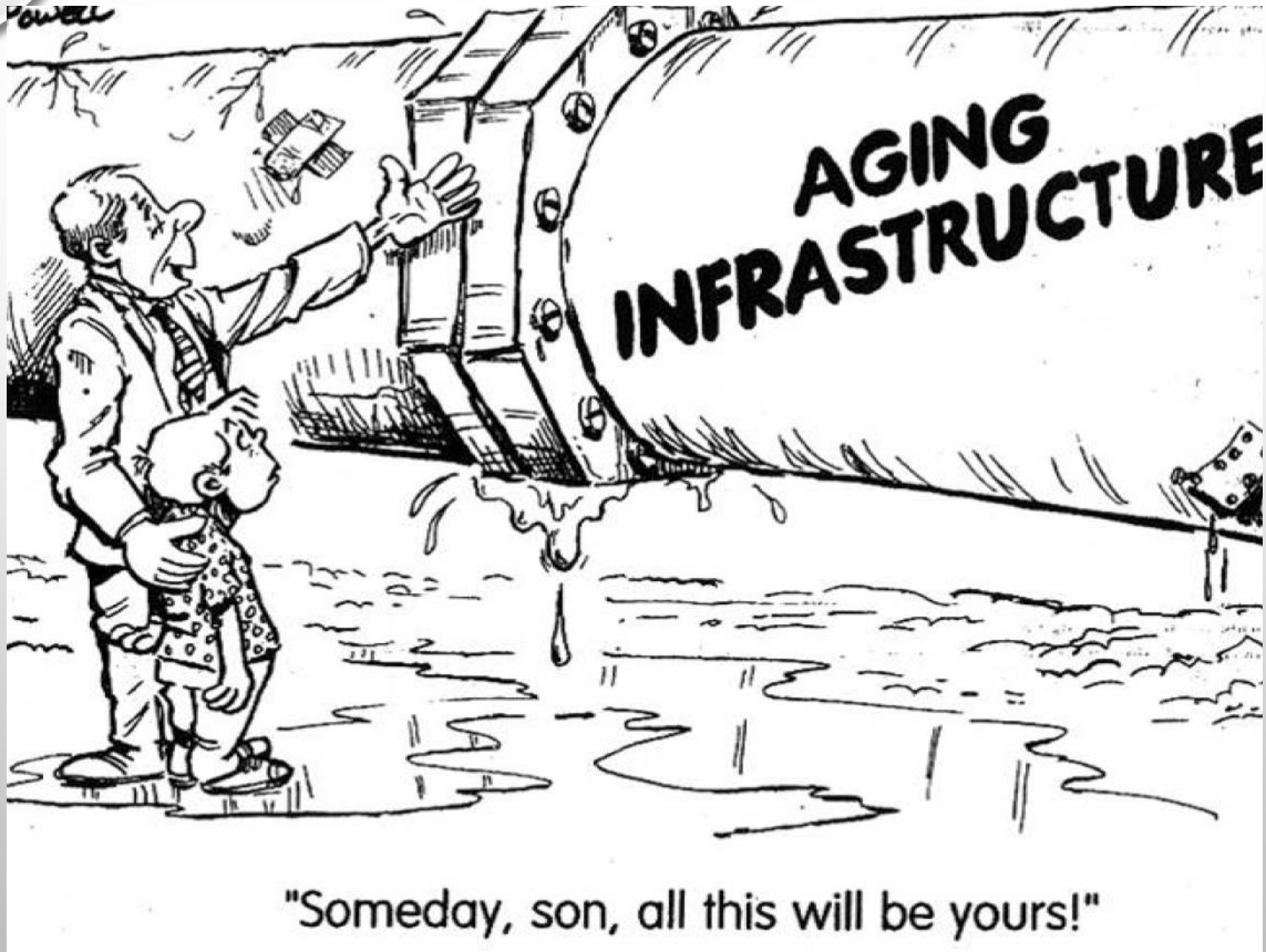
(EXAMPLE: NOTTINGHAM WAY AND LEDO ROAD)



2005



2011



"Someday, son, all this will be yours!"

# STORMWATER MANAGEMENT PROGRAM (SWMP) ACTIVITIES

- INSPECTION OF 20,000+ STORM STRUCTURES
  - CATCH BASINS, MANHOLES, CULVERTS, FLUMES, ETC.
- MAINTENANCE
  - 550 MILES OF STREETS AND DRAINAGE
  - 330 MILES OF SEWER PIPES
  - 12,000 DRAINAGE INLETS
  - 10,000 DRAINAGE STRUCTURES
  - 200 MILES OF DITCHES & 100 HOLDING PONDS
  - SCREEN CLEANING TO REMOVE LITTER & DEBRIS
  - PREVENTATIVE MAINTENANCE OF 20+ STORM STATIONS
- CAPITAL PROJECTS & CONSTRUCTION IMPROVEMENTS



# DRAINAGE SYSTEM MAINTENANCE



**Screens cleaned at Storm Station #103**



# DRAINAGE SYSTEM MAINTENANCE



**Tire Removal at Storm Station #76**



# DRAINAGE SYSTEM MAINTENANCE



03/31/2009

**Debris Removal at Storm Station #31**



# DRAINAGE SYSTEM MAINTENANCE



**Stormwater Ditch Pipe Erosion**

# DRAINAGE SYSTEM MAINTENANCE

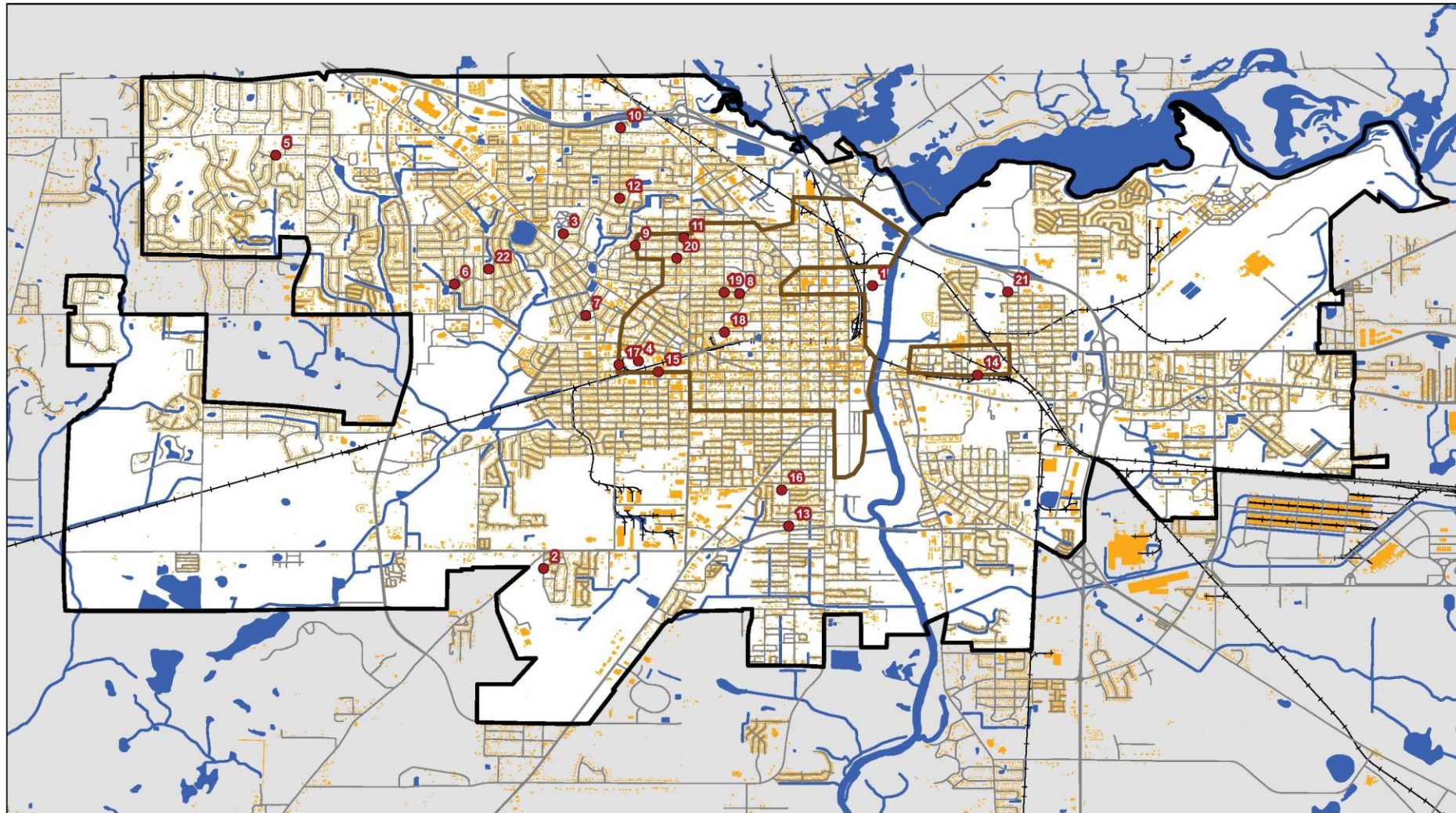


**Portable stormwater pumps**



# CAPITAL PROJECTS

(22 MAJOR PROJECTS CURRENTLY IDENTIFIED)



### Legend

- Roads
- Railroads
- Buildings
- City of Albany

### Attachment C

Stormwater Projects and Improvements  
City of Albany, Georgia



February 23, 2012

### Project Type

- Capital Projects

# REGULATORY REQUIREMENTS

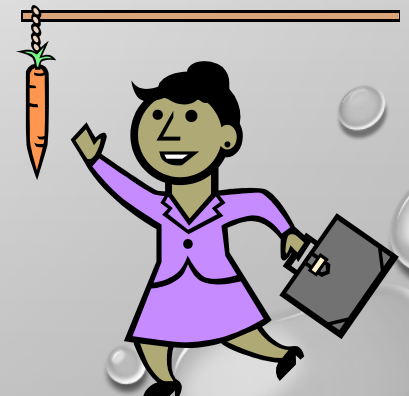
- NATIONAL POLLUTANT DISCHARGE ELIMINATION SYSTEM (NPDES) PHASE II MUNICIPAL SEPARATE STORM SEWER SYSTEM (MS4) PERMIT

- ISSUED BY GEORGIA ENVIRONMENTAL PROTECTION DIVISION
- INSPECT AND MAINTAIN ALL PUBLIC & PRIVATE POST-CONSTRUCTION STORM STRUCTURES WITHIN A 5 YEAR PERIOD
- DEVELOP AN ENFORCEMENT RESPONSE PLAN (ERP) WITH PROCEDURES TO ENFORCE THE STORMWATER ORDINANCES.
- IDENTIFY IMPAIRED WATERS & PREPARE A MONITORING & IMPLEMENTATION PLAN INCLUDING SAMPLING, ASSESSMENT & MITIGATION.

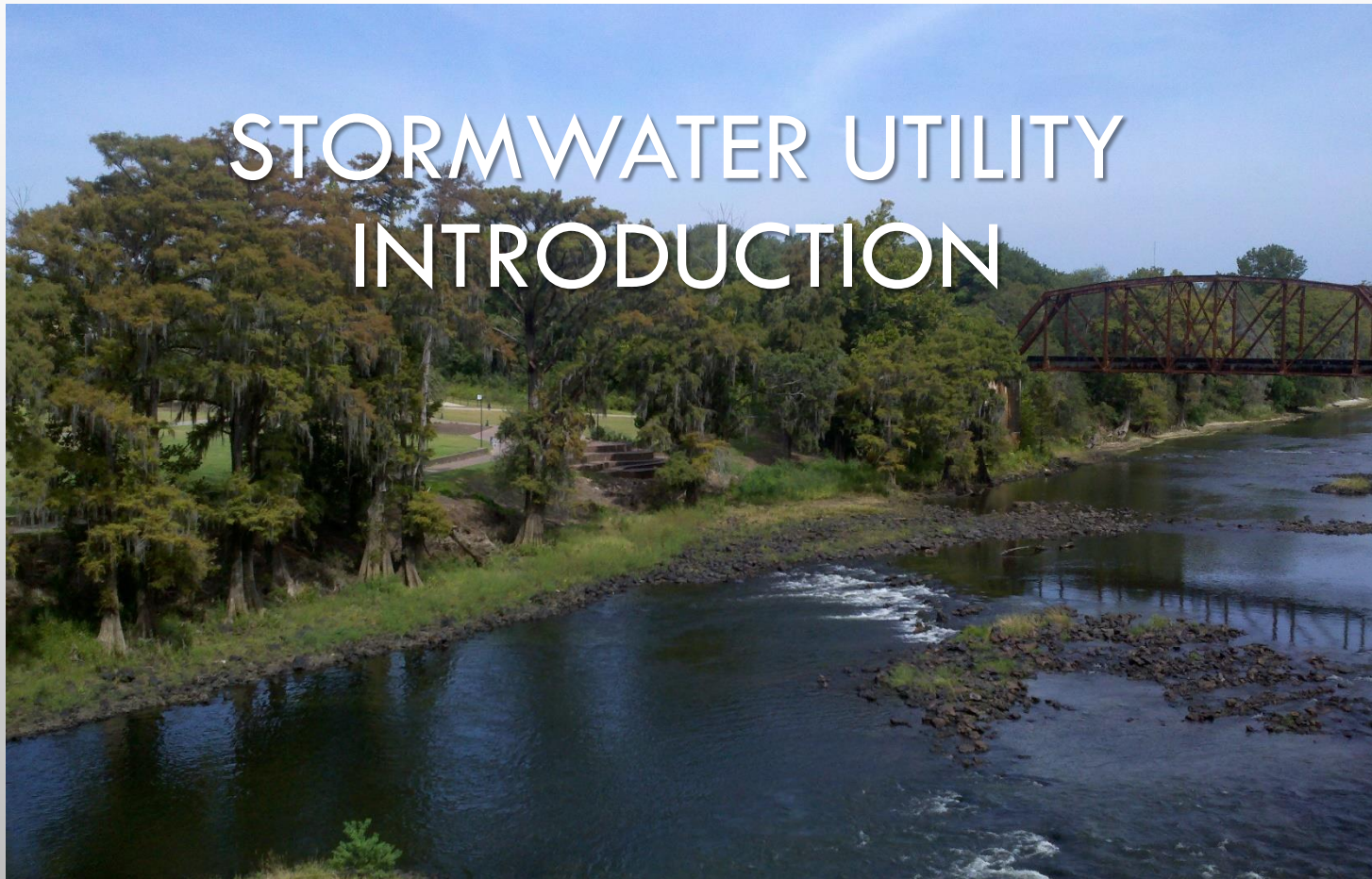


# WHAT IF LOCAL GOVERNMENTS DON'T COMPLY WITH THE REGULATIONS?

- EPD ENFORCEMENT – HAMMER & CARROT
  - ADMINISTRATIVE FINES (\$50,000/DAY/VIOLATION)
  - NON- COMPLIANCE WITH NPDES WASTEWATER PERMITS & WATER WITHDRAWAL PERMITS
  - LOSS OF QUALIFIED LOCAL GOVERNMENT STATUS
  - LOSS OF ELIGIBILITY FOR STATE FUNDING



# STORMWATER UTILITY INTRODUCTION



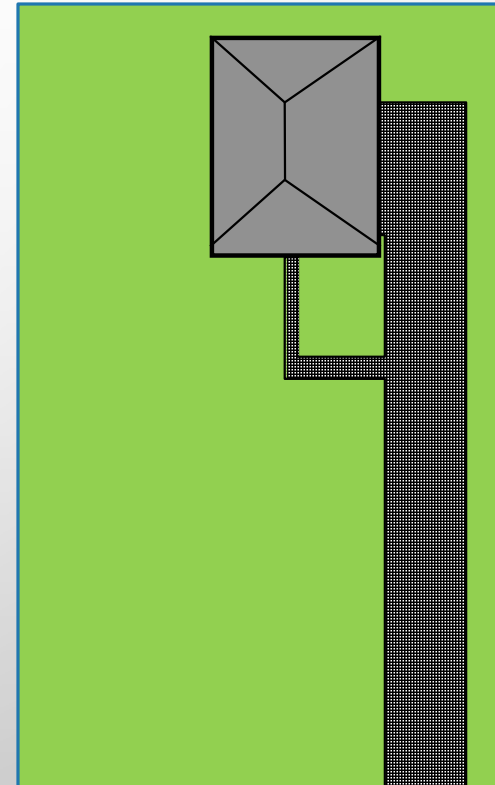


# STORMWATER UTILITY OVERVIEW

- FUNCTIONS AS A USER FEE BASED SYSTEM SIMILAR TO OTHER PUBLIC UTILITIES (WATER, SEWER, SANITATION, ETC.)
- EVERYONE PAYS THEIR “FAIR SHARE” OF THE SWMP PROGRAM COST BASED ON THE DEMAND THEIR PROPERTY PLACES ON THE DRAINAGE SYSTEM AND THE STORMWATER SERVICES THEIR PROPERTY RECEIVES FROM THE CITY.
- THE DEMAND A PARCEL PLACES ON THE DRAINAGE SYSTEM IS ROUGHLY EQUAL TO THE AMOUNT OF IMPERVIOUS SURFACE ON THE PROPERTY.
  - I.E. THE MORE IMPERVIOUS SURFACE, THE MORE RUNOFF GENERATED, THE HIGHER THE USER FEE.
- DEDICATED FEE CAN ONLY BE USED FOR STORMWATER PROGRAM IMPLEMENTATION

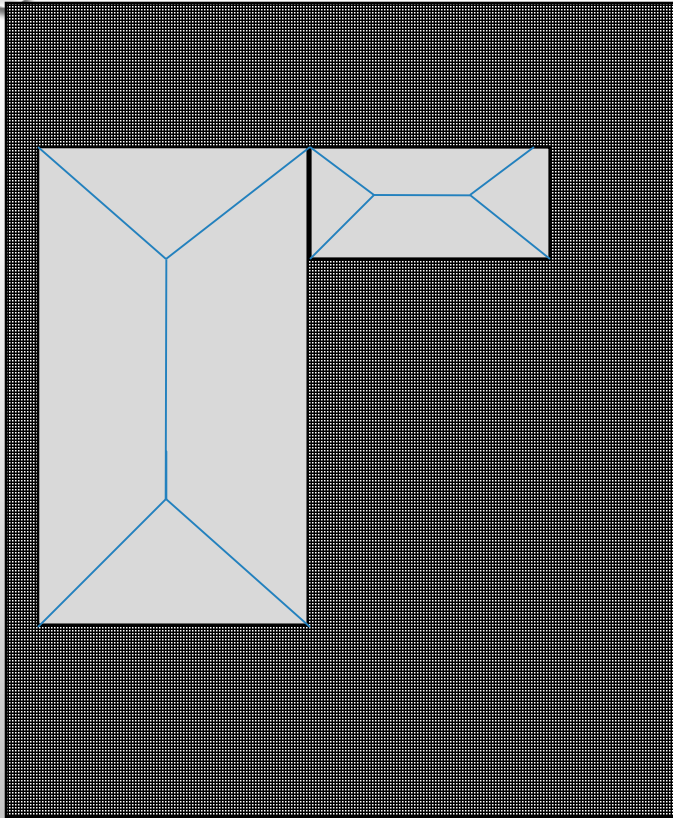
# HOW A SW UTILITY USER FEE IS CALCULATED:

- EQUIVALENT RESIDENTIAL UNIT (ERU)  
= BILLING UNIT
- ERU = SINGLE-FAMILY RESIDENTIAL  
MEDIAN IMPERVIOUS AREA
- EXAMPLE ERU:
  - ROOFTOP = 1,500 SQFT
  - DRIVEWAY = 1,000 SQFT
  - SIDEWALK = 200 SQFT
  - TOTAL ERU = 2,700 SQFT

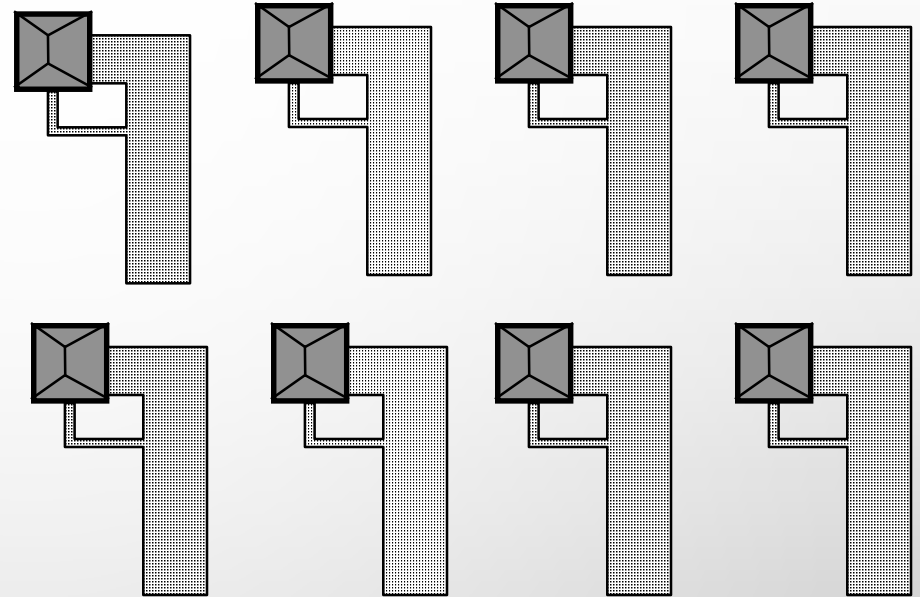




# HOW A SW UTILITY USER FEE IS CALCULATED: NON SINGLE FAMILY RESIDENTIAL



=



Building Footprint = 10,000 sqft  
Parking Lot = 11,600 sqft  
Total Impervious Area = 21,600 sqft  
ERU = 2,700 sq ft

**Total ERUs = 21,600 sqft / 2,700 sqft  
= 8 ERUs**

# ALBANY STORMWATER USER FEE ORDINANCE

- PROPOSED RATE \$2.50 PER BILLING UNIT. A BILLING UNIT = 2,700 SQUARE FEET OF IMPERVIOUS SURFACE.
- FEE CHARGED ON MONTHLY WG&L BILL
- BILLING TO START APRIL 1, 2014.
- STORMWATER UTILITY CUSTOMERS CAN GET CREDITS ON THEIR BILL IF THEY REDUCE THEIR IMPACT ON SWMP.



# GEORGIA STORMWATER UTILITIES

- HOW MANY?
  - FIRST GEORGIA SW UTILITY WAS GRIFFIN, GA IN 1998
  - APPROXIMATELY 50 SW UTILITIES IN 2012
- WHAT ABOUT OUTSIDE THE METRO ATLANTA AREA?
  - AMERICUS, CAMILLA, VALDOSTA, COVINGTON, HINESVILLE, GARDEN CITY, WARNER ROBINS, PERRY
- AVERAGE RESIDENTIAL CUSTOMER RATE IN GEORGIA?
  - APPROXIMATELY \$3.75 PER MONTH
  - AMERICUS AND CAMILLA ARE \$4.00/BILLING UNIT PER MONTH

# STORMWATER USER FEE RATE COMPARISON

Community	Billing Rate	ERU
Perry	\$2.00/ERU	3,000 Sq Ft.
Valdosta	\$2.50/ERU	3,704 Sq Ft.
<b>Albany</b>	<b>\$2.50/ERU</b>	<b>2,700 Sq Ft</b>
Fayetteville	\$2.95/ERU	3,800 Sq Ft.
Americus	\$4.00/ERU	3,000 Sq Ft
Camilla	\$4.00/ERU	3,360 Sq Ft
Canton	\$4.08/ERU	2,000 sq ft
Hinesville	\$4.25/ERU	2,685 Sq Ft.
Warner Robbins	\$4.25/ERU	3,000 Sq Ft.
Griffin	\$4.65/ERU	2,200 Sq Ft
Garden City	\$4.75/ERU	3,000 Sq Ft
Decatur	\$5.00/ERU	2,900 Sq Ft
Peachtree City	\$6.89/ERU	4,600 Sq Ft.





# STORMWATER UTILITY CREDITS

# STORMWATER USER FEE CREDITS

- REDUCE USER FEE CHARGE AMOUNT FOR CUSTOMERS THAT REDUCE THE CITY'S COST TO PROVIDE SWMP SERVICES
- TYPICAL CREDITS
  - DETENTION FACILITIES
  - NO DIRECT DISCHARGE
  - WATER QUALITY MANAGEMENT
- INNOVATIVE CREDITS
  - WATER RESOURCES EDUCATION
  - WATERSHED STEWARDSHIP



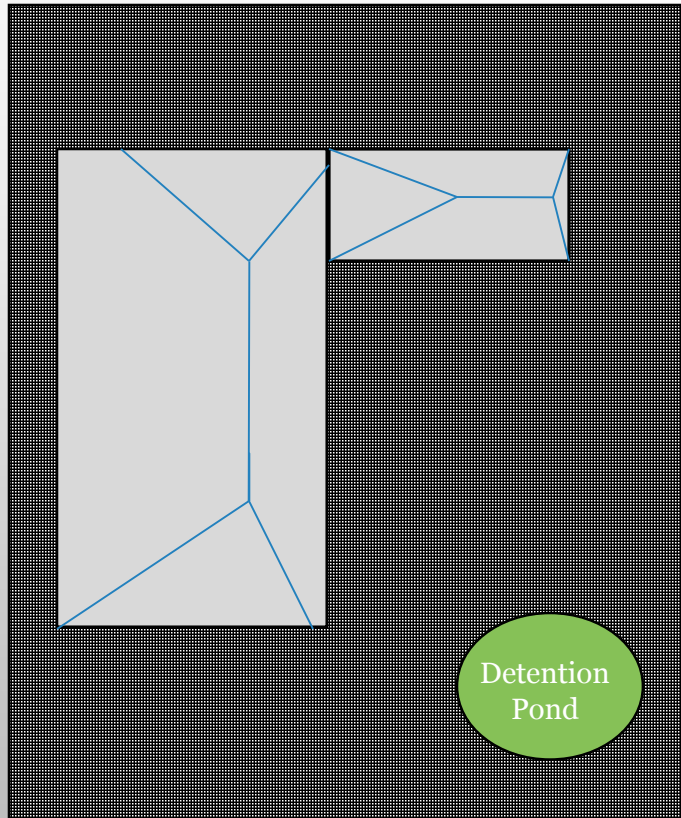


# STORMWATER USER FEE CREDITS FOR NON SINGLE FAMILY RESIDENTIAL

- LOW IMPACT PARCEL
- NO DIRECT DISCHARGE
- WATERSHED STEWARDSHIP
- SEPTIC TANK MAINTENANCE
- STORMWATER RUNOFF INFILTRATION
- NATURAL AREA PRESERVATION
- WATER RESOURCES EDUCATION
- NPDES INDUSTRIAL PERMIT
- DETENTION POND



# HOW A SW UTILITY USER FEE IS CALCULATED: CREDITS



Building Footprint = 10,000 sqft

Parking Lot = 16,000 sqft

Total Impervious Area = 21,600 sqft

ERU = 2,700 sq ft

**Total ERUs = 21,600 sqft / 2,700 sqft = 8 ERUs**

**1 ERU = \$2.50/month**

**8 ERUs = 8 x \$2.50 = \$20.00/month**

**Credit for Detention = 30%**

**New Bill Amount \$14.00/month**

# QUESTIONS?

VISIT: [WWW.ALBANY.GA.US](http://WWW.ALBANY.GA.US) AND CLICK ON STORMWATER  
MANAGEMENT PROGRAM UNDER “NEWS AND ANNOUNCEMENTS.”  
CALL CITY OF ALBANY ENGINEERING DEPARTMENT AT (229) 883-6955.