



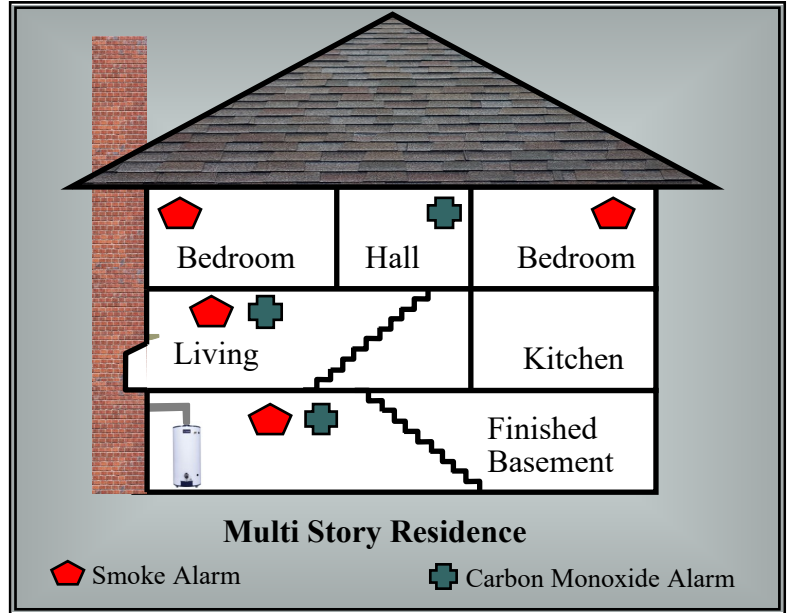
# Residential Smoke & Carbon Monoxide Alarms

## When are Smoke Alarms required to be installed:

- ◆ Smoke Alarms are required to be installed in all new construction, alterations, repairs and additions.

## When are Smoke Alarms **NOT** required to be installed:

- ◆ Work involving the exterior surfaces of a dwelling such as the replacement of roofing or siding. The addition or replacement of windows or doors or the addition of a porch or deck.
- ◆ Installation, alteration or repairs of plumbing or mechanical systems.



## When are Carbon Monoxide Alarms required to be installed:

- ◆ Carbon Monoxide alarms are required to be installed in all new construction, alterations, repairs and additions of homes, apartments, condominiums, and other multi-family units when the dwelling unit contains a fuel fired appliance or attached garage with an opening that communicates with the dwelling unit.

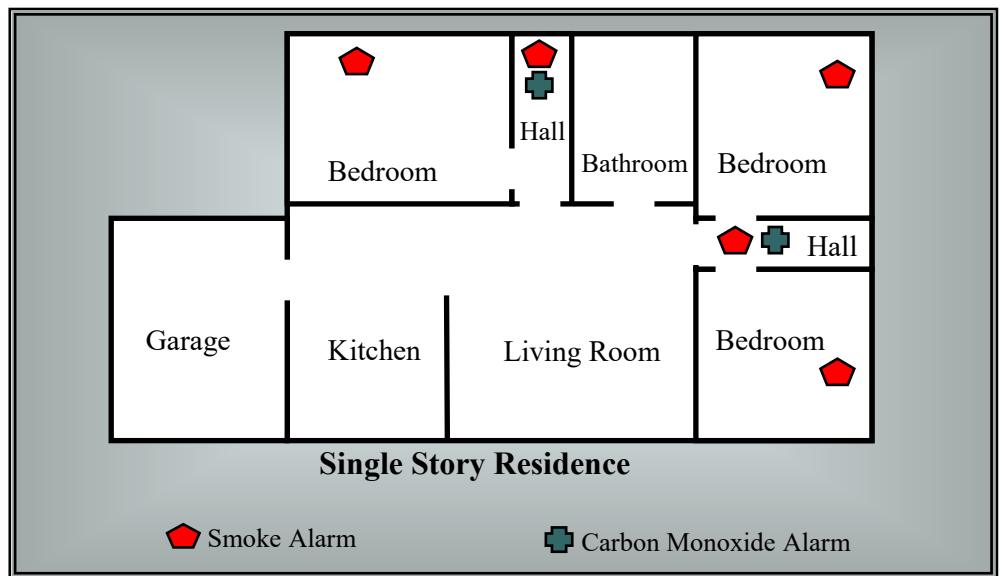
## When are Carbon Monoxide Alarms **NOT** required to be installed:

- ◆ Work involving the exterior surfaces of a dwelling such as the replacement of roofing or siding. The addition or replacement of windows or doors or the addition of a porch or deck.
- ◆ Installation, alteration or repairs of plumbing or mechanical systems.

### Inspection Services Department

240 Pine Ave Ste 300  
 Albany, GA 31702  
 Monday through Friday  
 8:00am to 4:30pm  
[inspections@albanyga.gov](mailto:inspections@albanyga.gov)  
 Inspection Phone 229-302-1855

The information contained within this bulletin is the most common needed to obtain a permit and is not representative of all the conditions that may be encountered during the construction of your project.



**Smoke and carbon monoxide alarms must be provided in all required locations , must be audible in all parts of the house and installed per manufacturer's instructions.**

### **Where do I install my Smoke and Carbon Monoxide Alarms?**

- ◆ Smoke alarms shall be located in each sleeping room and in napping areas in a family home child care.
- ◆ Smoke alarms and carbon monoxide alarms shall be located outside each sleeping area in the immediate vicinity of the bedrooms.
- ◆ Smoke alarms and carbon monoxide alarms shall be located on every floor level, including basements (does not include crawlspace and uninhabitable attics).
- ◆ In split level floor plans, at the upper level, provided there is no intervening door between adjacent levels and the lower level is less than a full story below the upper level
- ◆ A carbon monoxide alarm is required in a bedroom when a fuel-burning appliance is installed in the bedroom or its attached bathroom.
- ◆ A combination alarm (combined smoke and carbon monoxide alarm) is acceptable in any required location.

### **Interconnection.**

Where more than one smoke alarm is required to be installed within an individual dwelling unit, the alarm devices shall be interconnected in such a manner that the actuation of one alarm will activate all of the alarms in the individual *dwelling unit*. Physical interconnection of smoke alarms shall not be required where listed wireless alarms are installed and all alarms sound upon activation of one alarm.

**Exception:** Interconnection of smoke alarms in existing areas shall not be required where *alterations* or repairs do not result in removal of interior wall or ceiling finishes exposing the structure, unless there is an *attic*, crawl space or *basement* available that could provide access for interconnection without the removal of interior finishes.

### **Carbon Monoxide Alarm Location Limitations**

- ◆ Do not place alarms directly above or beside fuel-burning appliances.
- ◆ Do not place alarms in direct sunlight.
- ◆ Do not place alarms in low areas where children can reach.
- ◆ Do not place alarms behind curtains or any structure that might prevent carbon monoxide from reaching the sensor.

### **Smoke Alarm Location Limitations**

- ◆ Wall mounted alarms must be not more than 12 inches from the adjoining ceiling surface.
- ◆ Avoid placing alarms less than 3 feet from supply registers of a forced air heating and cooling system and do not place alarms in the direct airflow of the registers.
- ◆ Avoid placing alarms within 3 feet horizontally from doors to bathrooms containing a bathtub or shower.
- ◆ Do not place alarms in spaces where temperatures may be above or below the alarm's operating temperature range.
- ◆ Do not place alarms within 3 feet of the blades of a ceiling fan.
- ◆ Alarms in peaked or sloped ceilings must be within 3 feet of the peak, measured horizontally, but not in the highest 4 inches of the ceiling, measured vertically.
- ◆ Avoid placing alarms in dead air spaces.

Smoke and carbon monoxide alarms must be connected to the main electrical system with battery backup.